

E. CHILLICOTHE AVE.

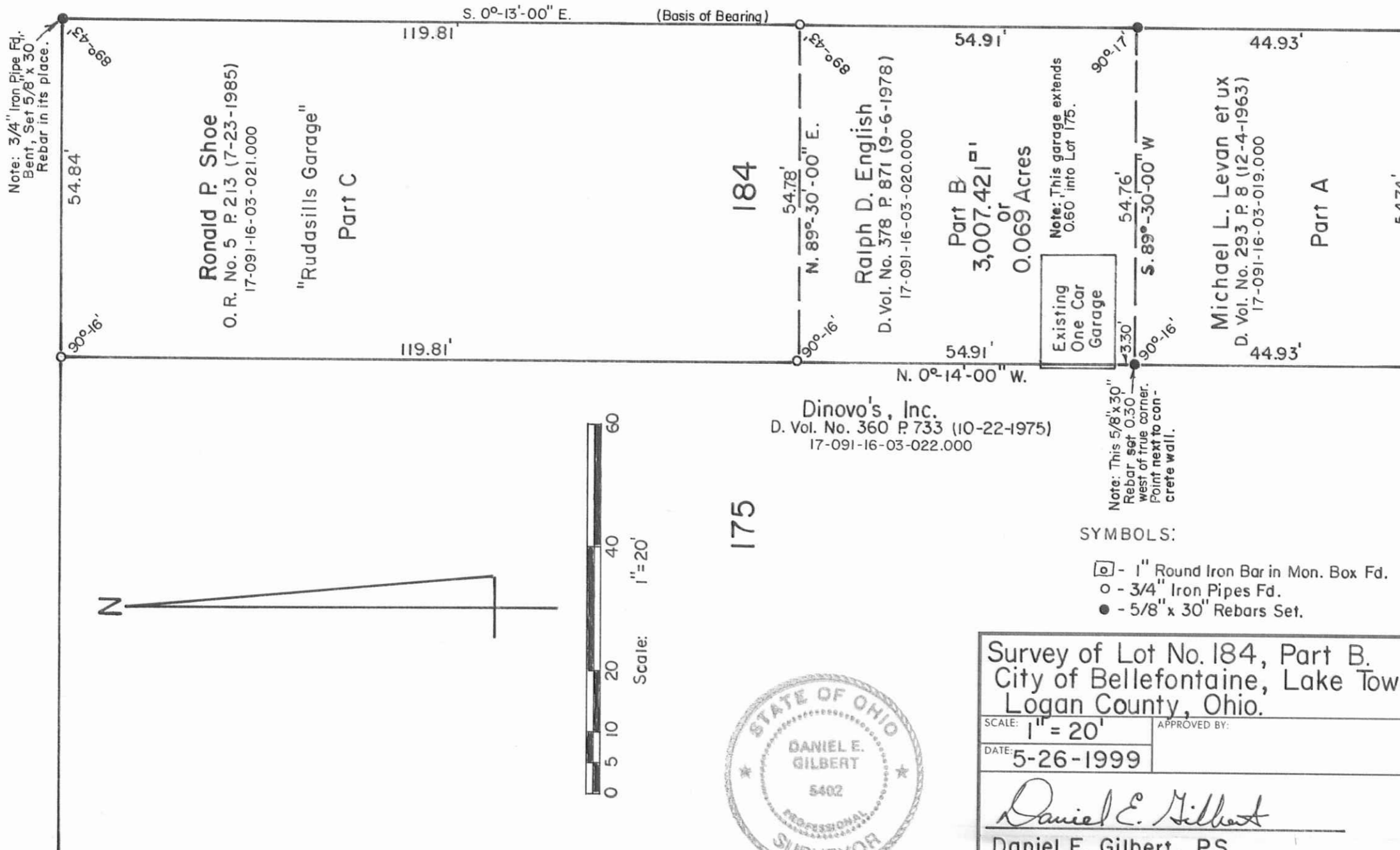
AVE.

N. 89°-30'-00" E.

- 60'

S. MADRIVER ST. - 60'

S. 0°-13'-00" E.



Scale: 1" = 20'



SYMBOLS:

- - 1" Round Iron Bar in Mon. Box Fd.
- - 3/4" Iron Pipes Fd.
- - 5/8" x 30" Rebars Set.

Survey of Lot No. 184, Part B.
 City of Bellefontaine, Lake Township,
 Logan County, Ohio.

SCALE: 1" = 20'	APPROVED BY:	DRAWN BY: DEG
DATE: 5-26-1999		REVISED:

Daniel E. Gilbert

Daniel E. Gilbert, P.S.
 Reg. Sur. No. 5402

DRAWING NUMBER
 099-019

Reference:
 Bellefontaine Original Plat.
 Plat Cabinet A, Slide 1 (8-12-1822).

16.50' ALLEY

INDEXED ON MAP
 9252

S-514