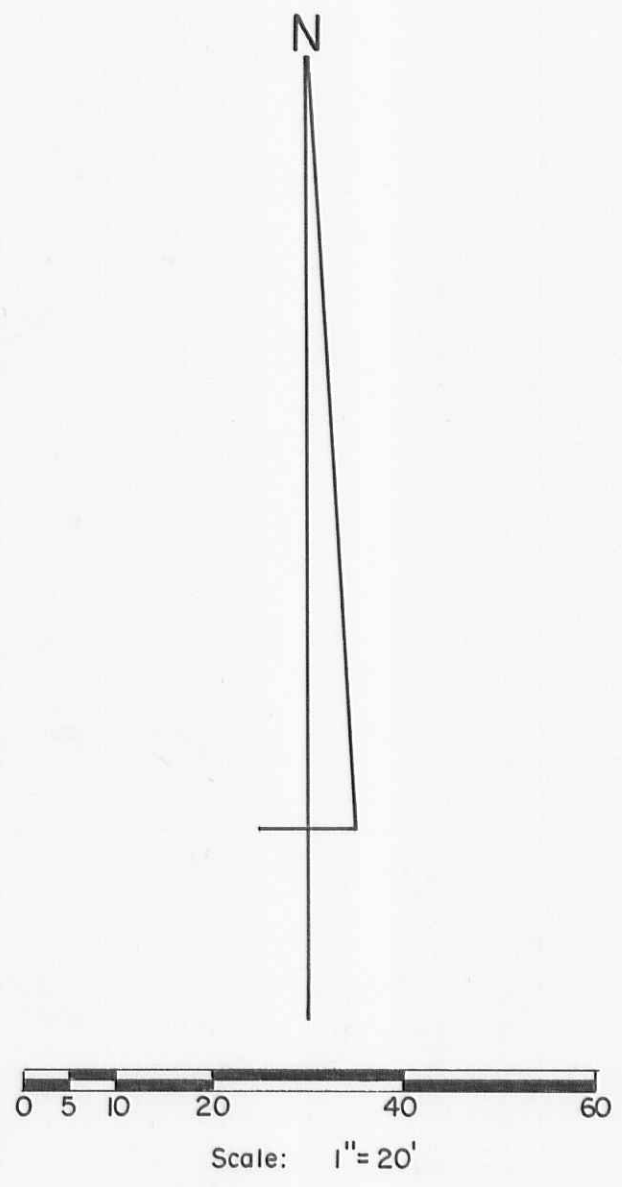
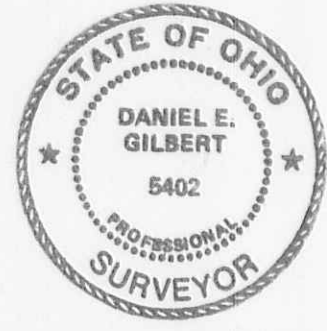
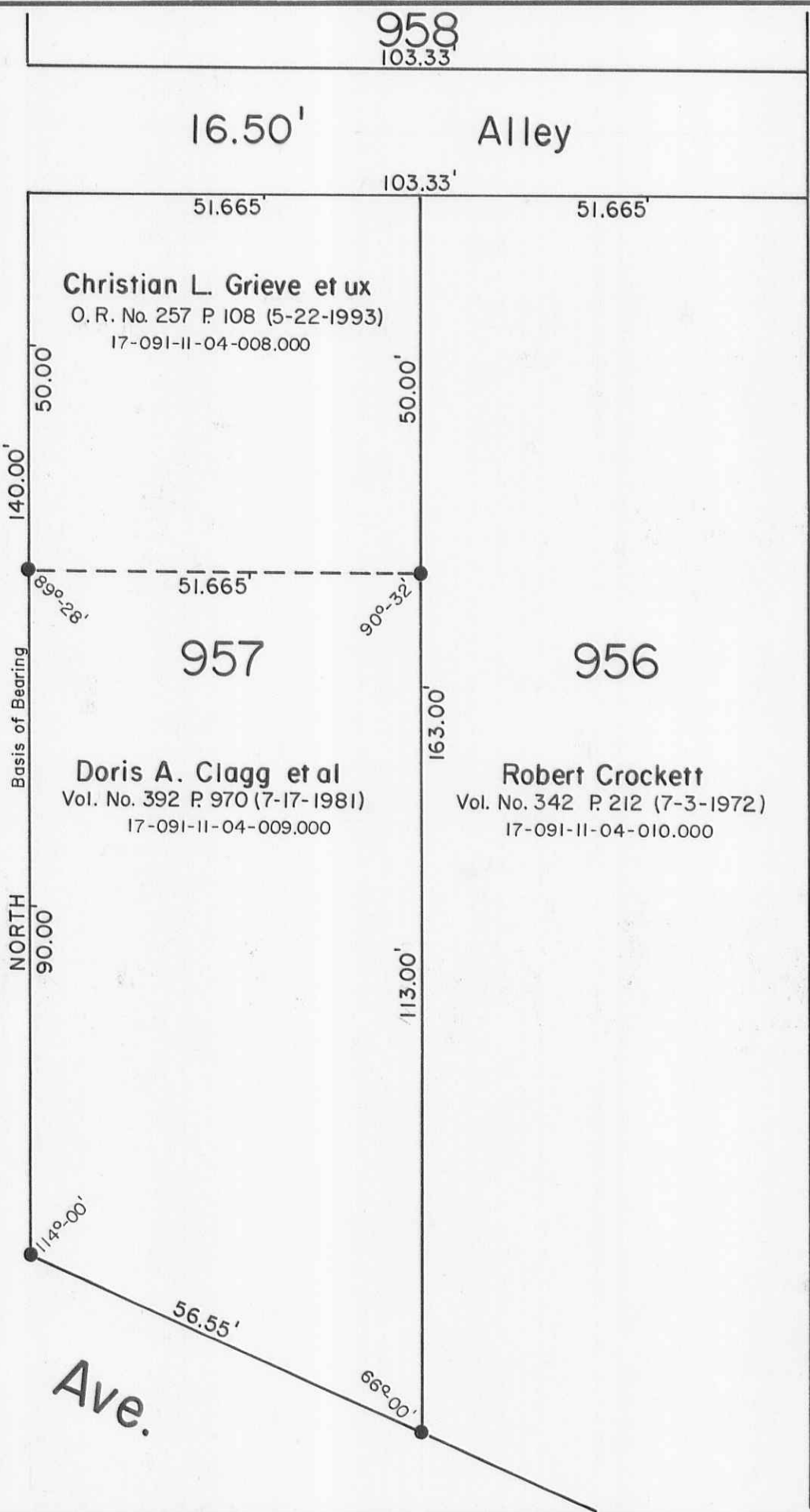


Lawrence St. - 45'

Garfield Ave.



Reference:
Lawrence 2nd. Addition (5-9-1897).
Plat Cab. A Slide 13.

Symbol:
● - 5/8" x 30" Rebars Set. (Capped).

CLAGG SURVEY - Lot No. 957 Part, Lawrence 2nd. Addition, City of Bellefontaine, Lake Township, Logan County, Ohio.		
SCALE: 1" = 20'	APPROVED BY:	DRAWN BY DEG
DATE: 7-31-1996		REVISED
<i>Daniel E. Gilbert</i> Daniel E. Gilbert, P.S. Reg. Sur. No. 5402		DRAWING NUMBER 096-044

S-571