

Existing

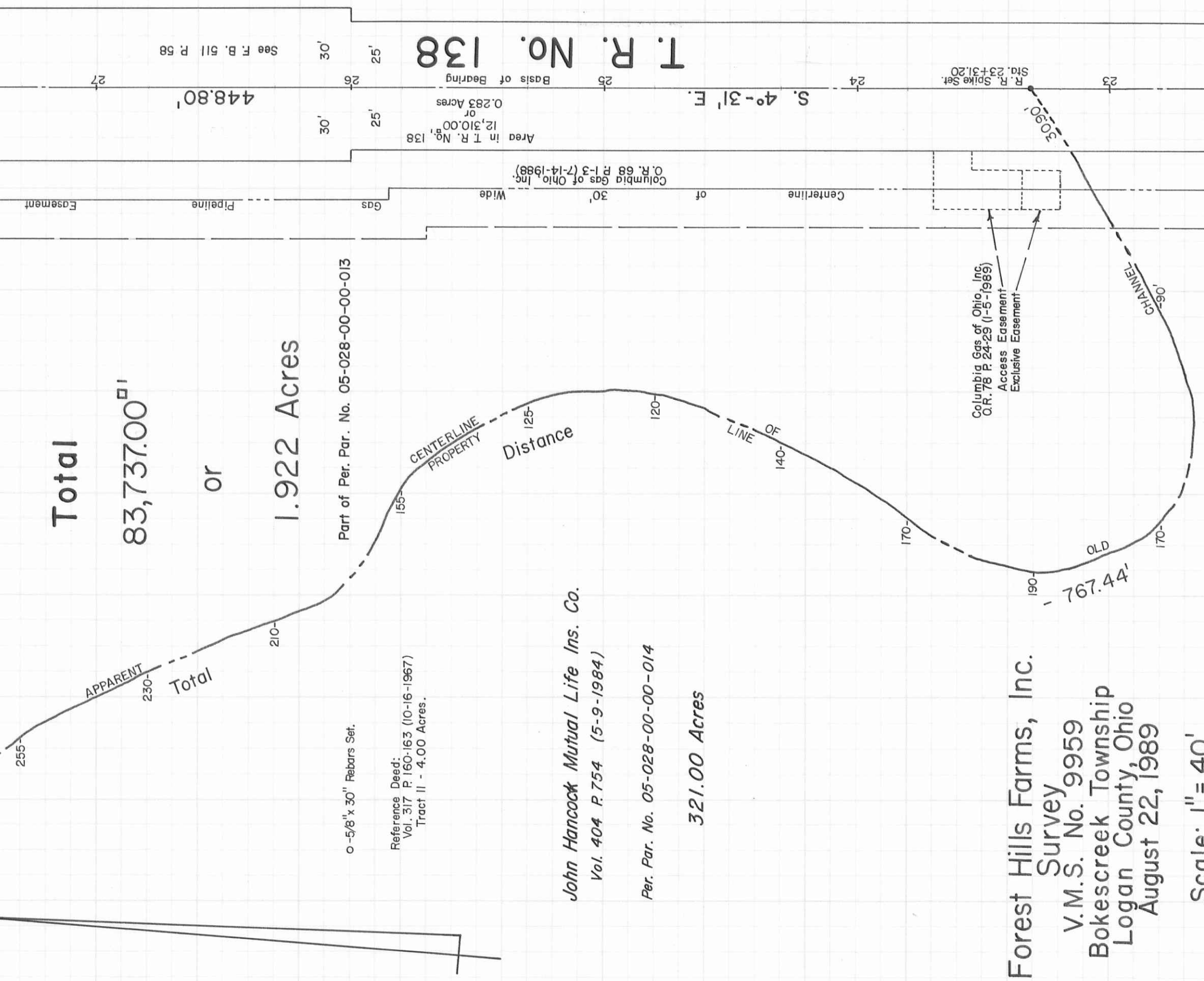
N. 85°-29' E.
177.40'

Rushcreek
300.00'

92.60'

30.00'

N



Total

83,737.00^{sq ft}

or

1.922 Acres

Part of Per. Par. No. 05-028-00-00-013

Reference Deed:
Vol. 317 P. 160-163 (10-16-1967)
Tract II - 4.00 Acres.

0-5/8" x 30" Rebars Set.

John Hancock Mutual Life Ins. Co.
Vol. 404 P. 754 (5-9-1984)

Per. Par. No. 05-028-00-00-014

321.00 Acres

Forest Hills Farms, Inc.
Survey
V.M.S. No. 9959
Bokescreek Township
Logan County, Ohio
August 22, 1989

Scale: 1" = 40'



Daniel E. Gilbert

DANIEL E. GILBERT, P.S.
Reg. Sur. No. 5402
400 N. Park St.
Bellevue, Ohio 43311

INDEXED ON MAP
6457

S-691

089-037