

Clifford A. Cronkleton et ux
 O.R. No. 11 P. 956 (12-7-1985)
 12-080-00-00-017.002

31.535 Acres

Angelo J. Bernard et ux
 O.R. No. 125 P. 967 (4-25-1991)
 12-080-00-00-017.004

5.945 Acres

Ernest Hemleben
 O.R. No. 142 P. 574-575 (11-20-1991)
 12-080-00-00-017.001

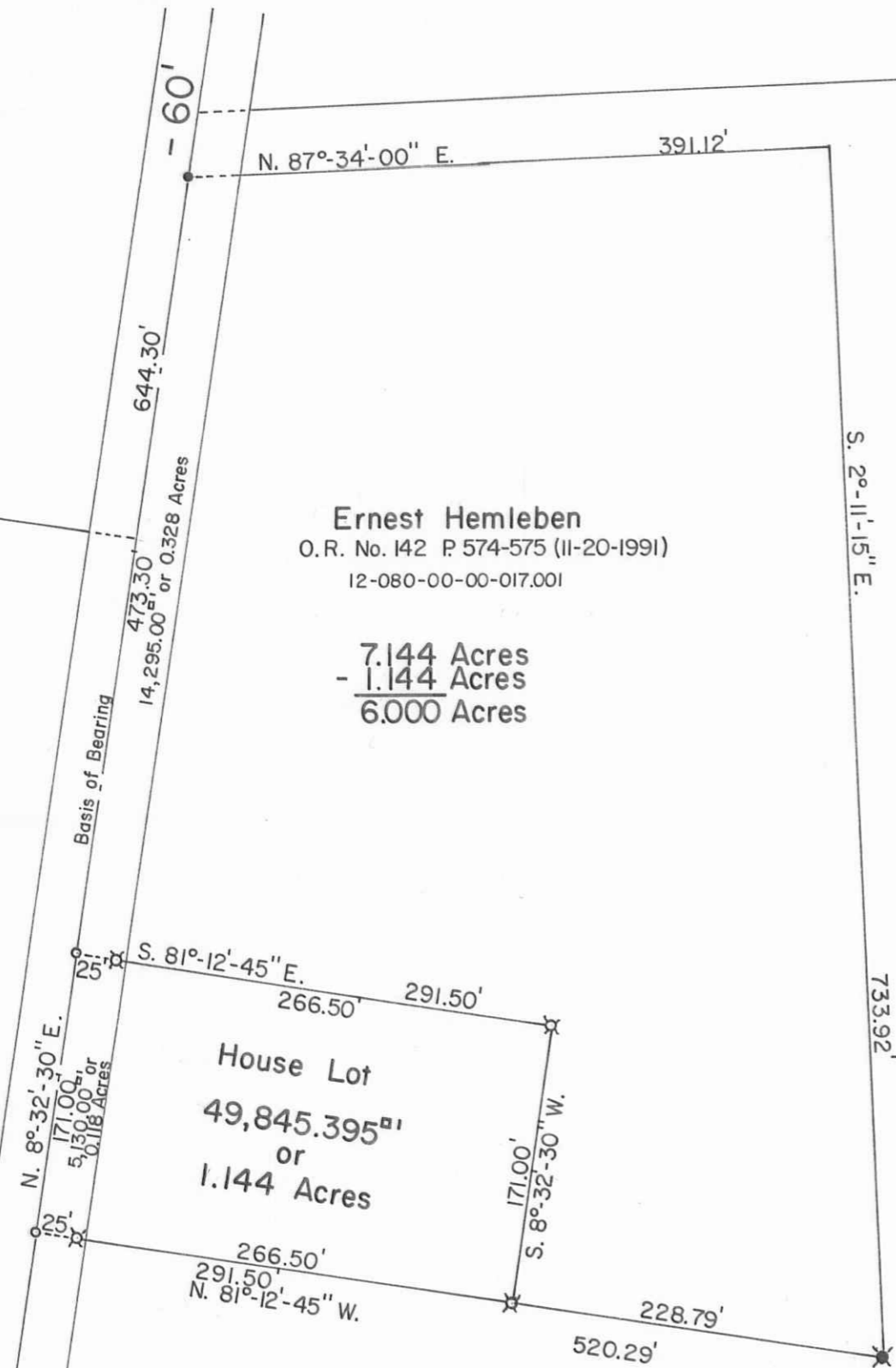
7.144 Acres
 - 1.144 Acres
 6.000 Acres

Philip L. Thompson et al
 O.R. No. 27 P. 665 (9-2-1986)
 12-080-00-00-017.000

61.276 Acres

INDEXED ON MAP
 7404

T.R. No. 135
 F.B. No. 511 P. 66.



Scale: 1"=100'

- SYMBOLS:
- - R. R. Spike Fd.
 - - R. R. Spikes Set.
 - ✕ - 5/8" Rebar Fd.
 - ✕ - 5/8" x 30" Rebars Set.



HEMLEBEN SURVEY - V.M.S. No. 3327		
Jefferson Township, Logan County, Ohio.		
SCALE: 1"=100'	APPROVED BY:	DRAWN BY DEG
DATE: 3-14-1994		REVISED
<i>Daniel E. Gilbert</i> Daniel E. Gilbert, P.S. Reg. Sur. No. 5402		DRAWING NUMBER 094-009

S-698