

See Note "A"

See Note "B"

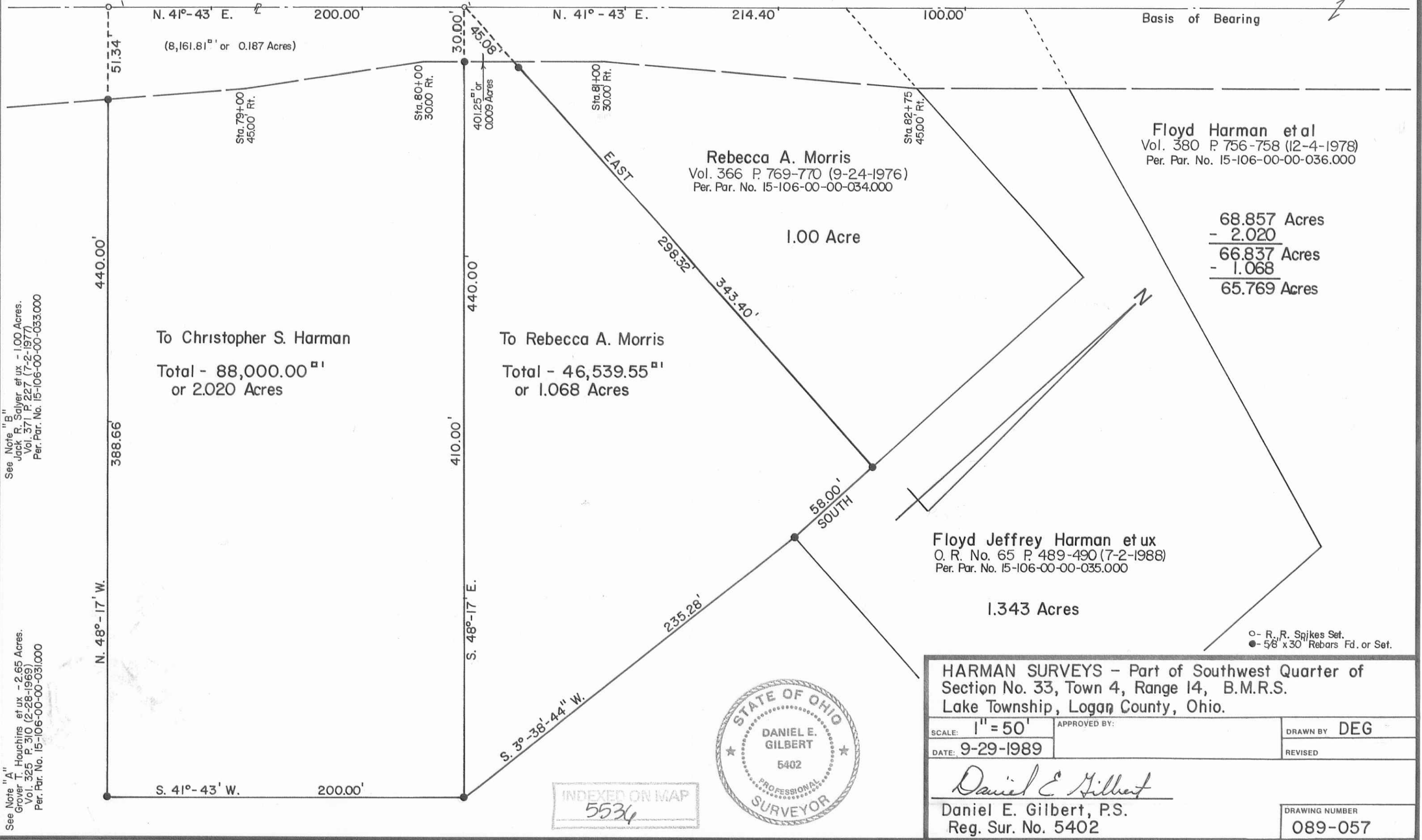
# C. H. No. 18

# Carlisle Pike

See Plan L-18 Page <sup>81</sup>/<sub>84</sub>

N. 41°-43' E. 200.00' N. 41°-43' E. 214.40' 100.00' Basis of Bearing ↗

(8,161.81<sup>sq</sup>' or 0.187 Acres)



See Note "B"  
Jack R. Salyer et ux - 1.00 Acres.  
Vol. 371 P. 227 (7-2-1977)  
Per. Par. No. 15-106-00-00-033.000

See Note "A"  
Grover T. Houchins et ux - 2.65 Acres.  
Vol. 325 P. 310 (2-28-1969)  
Per. Par. No. 15-106-00-00-031.000

To Christopher S. Harman  
Total - 88,000.00<sup>sq</sup>'  
or 2.020 Acres

To Rebecca A. Morris  
Total - 46,539.55<sup>sq</sup>'  
or 1.068 Acres

**Rebecca A. Morris**  
Vol. 366 P. 769-770 (9-24-1976)  
Per. Par. No. 15-106-00-00-034.000

**Floyd Harman et al**  
Vol. 380 P. 756-758 (12-4-1978)  
Per. Par. No. 15-106-00-00-036.000

68.857 Acres
- 2.020
66.837 Acres
- 1.068
65.769 Acres

**Floyd Jeffrey Harman et ux**  
O. R. No. 65 P. 489-490 (7-2-1988)  
Per. Par. No. 15-106-00-00-035.000

1.343 Acres

○ - R. R. Spikes Set.  
● - 5/8" x 30" Rebars Fd. or Set.

INDEXED ON MAP  
5534



HARMAN SURVEYS - Part of Southwest Quarter of Section No. 33, Town 4, Range 14, B.M.R.S. Lake Township, Logan County, Ohio.		
SCALE: 1" = 50'	APPROVED BY:	DRAWN BY DEG
DATE: 9-29-1989		REVISED
 Daniel E. Gilbert, P.S. Reg. Sur. No. 5402		DRAWING NUMBER 089-057

## S-711