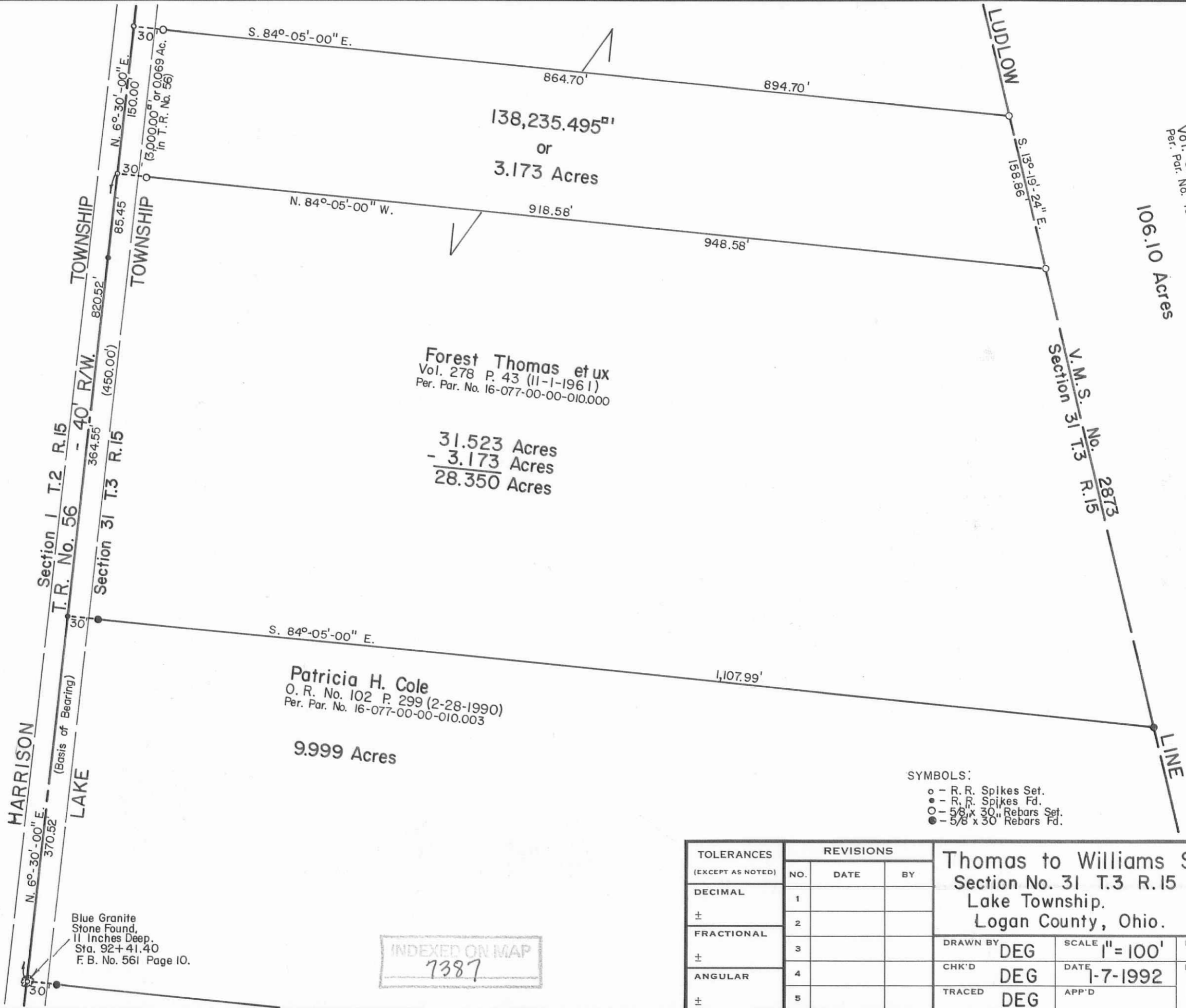


Daniel E. Gilbert
DANIEL E. GILBERT, P.S.
 REG. SUR. NO. 5402
 400 N. PARK ST.
 BELLEFONTAINE, OHIO 43311
 TELEPHONE: 1 (513) 593-1428



Richard E. Groves et al
 Vol. 352 P. 270 (4-12-1974)
 Per. Par. No. 16-077-00-00-012.000
 106.10 Acres

Forest Thomas et ux
 Vol. 278 P. 43 (11-1-1961)
 Per. Par. No. 16-077-00-00-010.000

31.523 Acres
 - 3.173 Acres
 28.350 Acres

Patricia H. Cole
 O. R. No. 102 P. 299 (2-28-1990)
 Per. Par. No. 16-077-00-00-010.003

9.999 Acres

- SYMBOLS:
- o - R. R. Spikes Set.
 - - R. R. Spikes Fd.
 - - 5/8" x 30" Rebars Set.
 - - 5/8" x 30" Rebars Fd.

INDEXED ON MAP
 7387

Blue Granite
 Stone Found,
 11 Inches Deep,
 Sta. 92+41.40
 F. B. No. 561 Page 10.

TOLERANCES (EXCEPT AS NOTED)	REVISIONS			Thomas to Williams Survey Section No. 31 T.3 R.15 B.M.R.S. Lake Township, Logan County, Ohio.		
	NO.	DATE	BY			
DECIMAL	1			DRAWN BY DEG	SCALE 1" = 100'	MATERIAL As Noted
±	2					
FRACTIONAL	3			CHK'D DEG	DATE 1-7-1992	DRAWING NO. 092-002
±	4					
ANGULAR	5			TRACED DEG	APP'D	
±						