

N

GRAND

TRUNK

Ohio

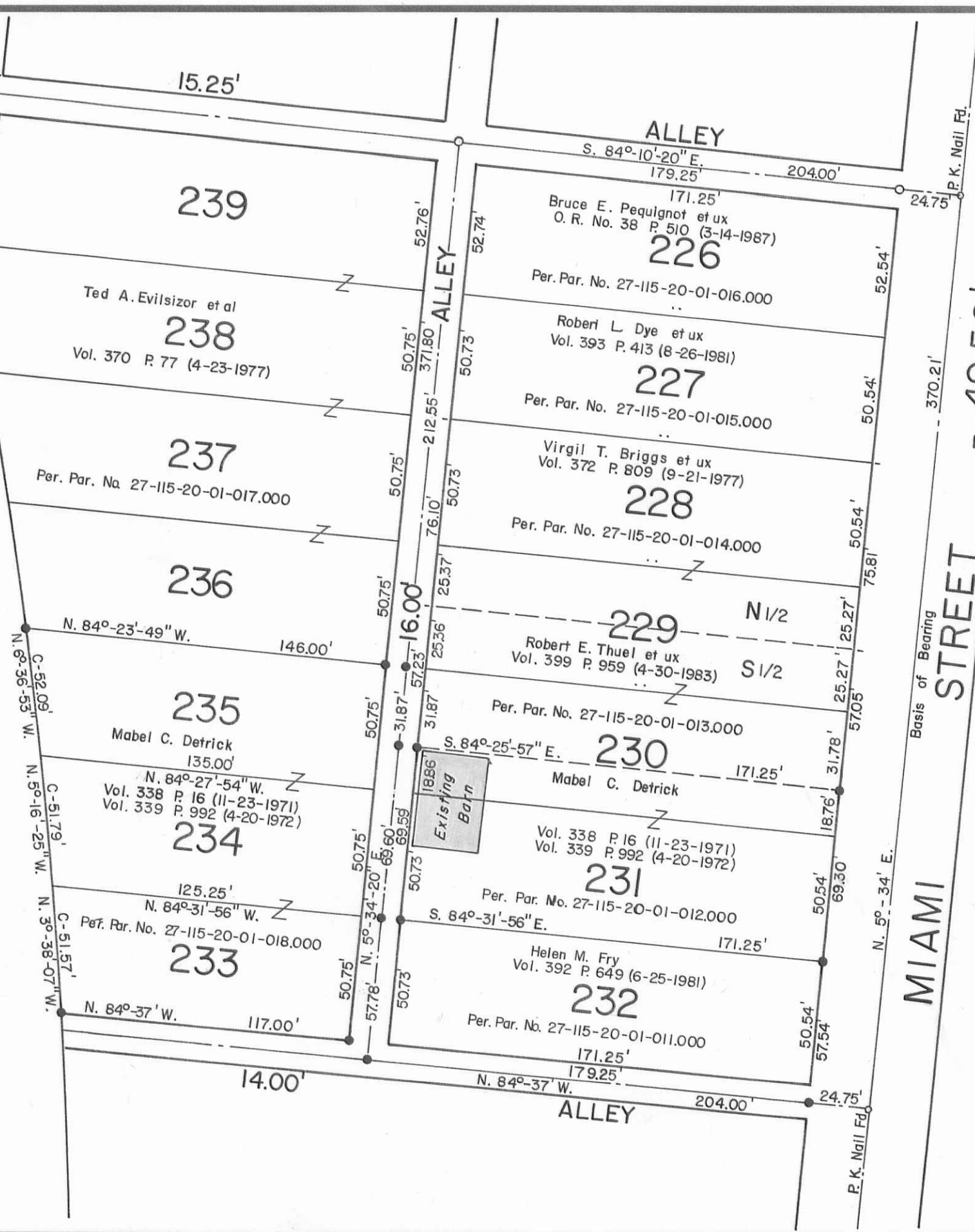
Southern

Railroad

WESTERN

RAILROAD

YOST ST.



Reference:  
 PRATT'S ADDITION to Quincy, Ohio.  
 Plat Book I A Pages 218-219 (6-25-1894).  
 Now Plat Cabinet A Slide 98.



○ - R. R. Spikes Set.  
 ● - 5/8" x 30" Rebars Set.

DETRICK SURVEY, Lots 230 Part, 231, 233, 234 & 235, Pratt's Addition, Village of Quincy, Miami Township, Logan County, Ohio.

SCALE: 1" = 50'	APPROVED BY:	DRAWN BY DEG
DATE: 10-25-1989		REVISED

*Daniel E. Gilbert*  
 Daniel E. Gilbert, P.S.  
 Reg. Sur. No. 5402

DRAWING NUMBER  
 089-066

INDEXED ON MAP  
 4238

S-743