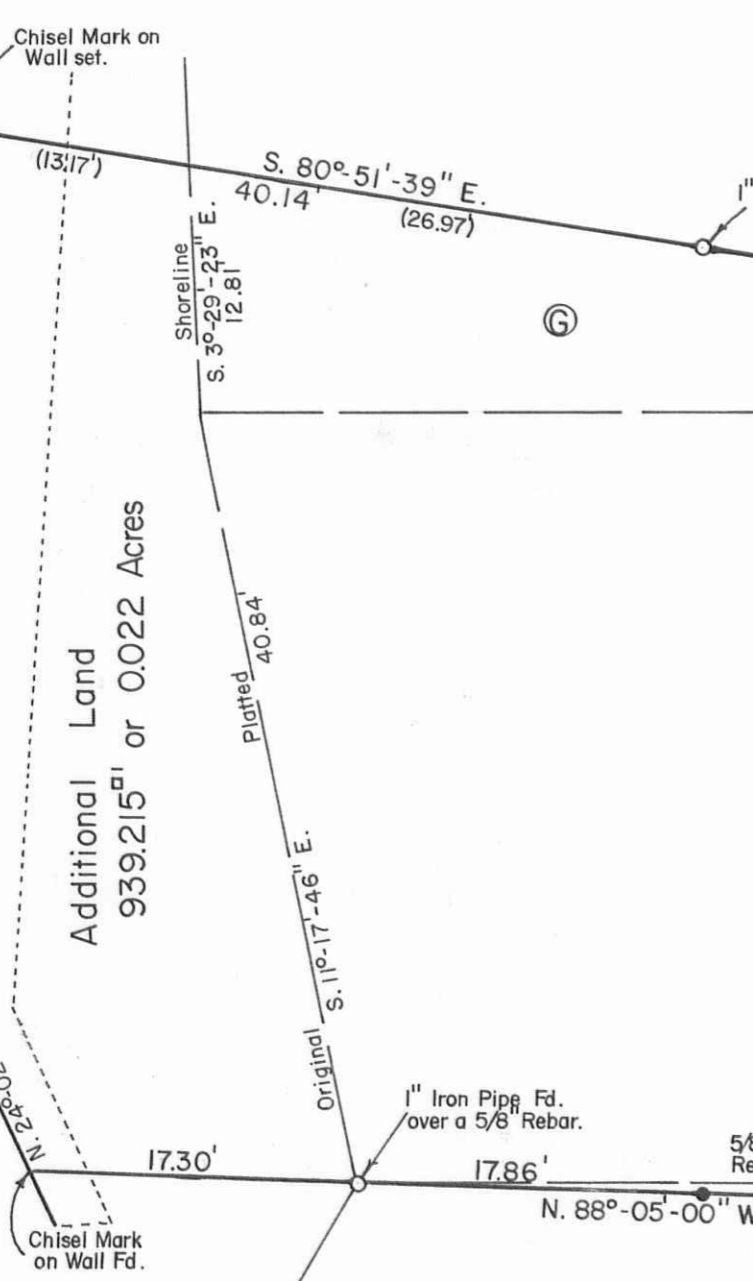
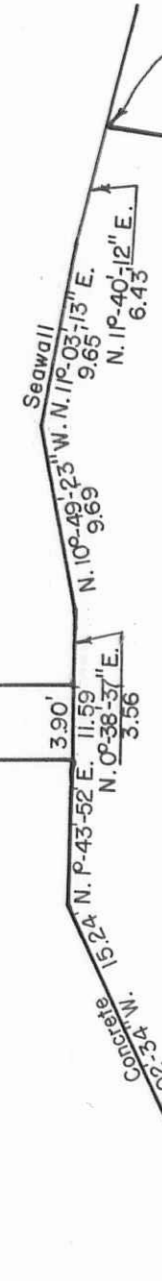
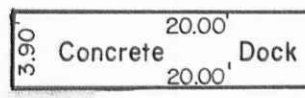


Indian Lake



Herbert F. Carson et ux  
Vol. 258 P. 527 (5-28-1959)  
Per. Par. No. 43-018-12-07-046.000

Park Lot

Lot No. 153

Louis Beyer et ux  
Vol. 397 P. 410 (9-3-1982)  
Per. Par. No. 43-018-12-07-047.000

David F. Maier  
O.R. 93 P. 349 (9-15-1989)  
Per. Par. No. 43-018-12-07-048.000

Lot No. 152

(Basis of Bearing)

Right of Way Line

SOUTH

SEMINOLE DRIVE  
C. H. No. 272 - 50'

Note: Seminole Drive increased to 50 Feet, September 1, 1956. Commissioners Journal 1-1 MF Pages 188 and 195.

Reference:  
Resurvey of Lots 151 to 158.  
Seminole Island Subdivision A.  
July 1945.  
Plat Cab. "A", Slide 254-255.

INDEXED ON MAP  
2091



*Daniel E. Gilbert*  
DANIEL E. GILBERT, P.S.  
REG. SUR. NO. 5402  
400 N. PARK ST.  
BELLEFONTAINE, OHIO 43311  
TELEPHONE: 1 (513) 593-1438

TOLERANCES (EXCEPT AS NOTED)	REVISIONS		
	NO.	DATE	BY
DECIMAL	1		
±	2		
FRACTIONAL	3		
±	4		
ANGULAR	5		
±			

Louis Beyer Property Resurvey Lot No. 152D, 153E and Park Lot G Seminole Island Subdivision, Stokes Township, Logan County, Ohio.		
DRAWN BY DEG	SCALE 1" = 10'	MATERIAL
CHK'D	DATE 7-9-1991	DRAWING NO.
TRACED	APP'D	091-032

S-839