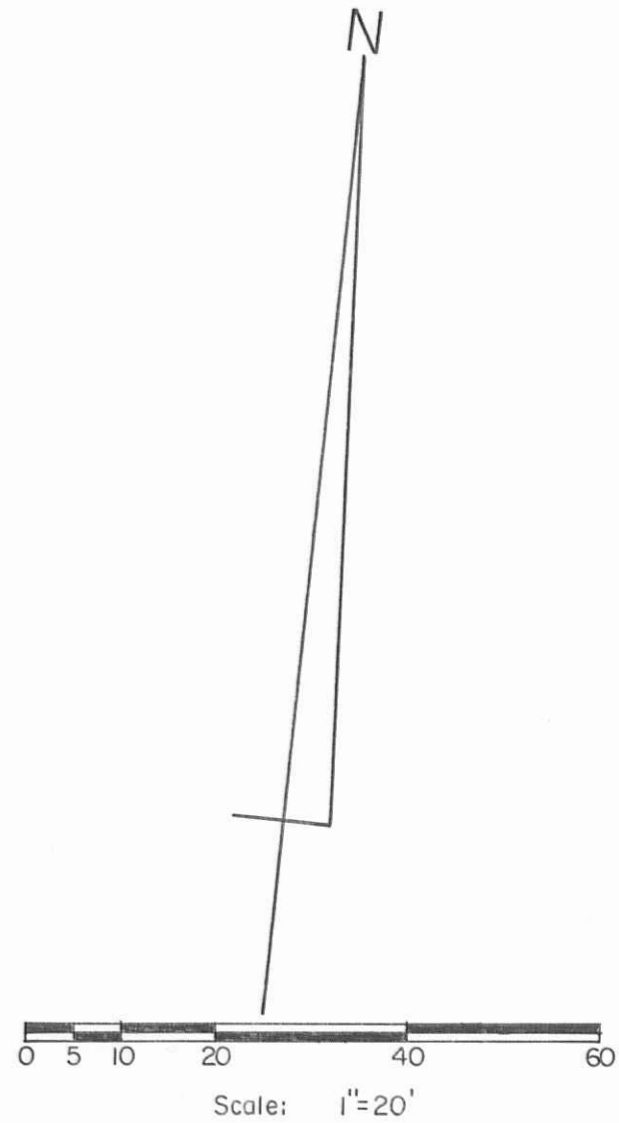
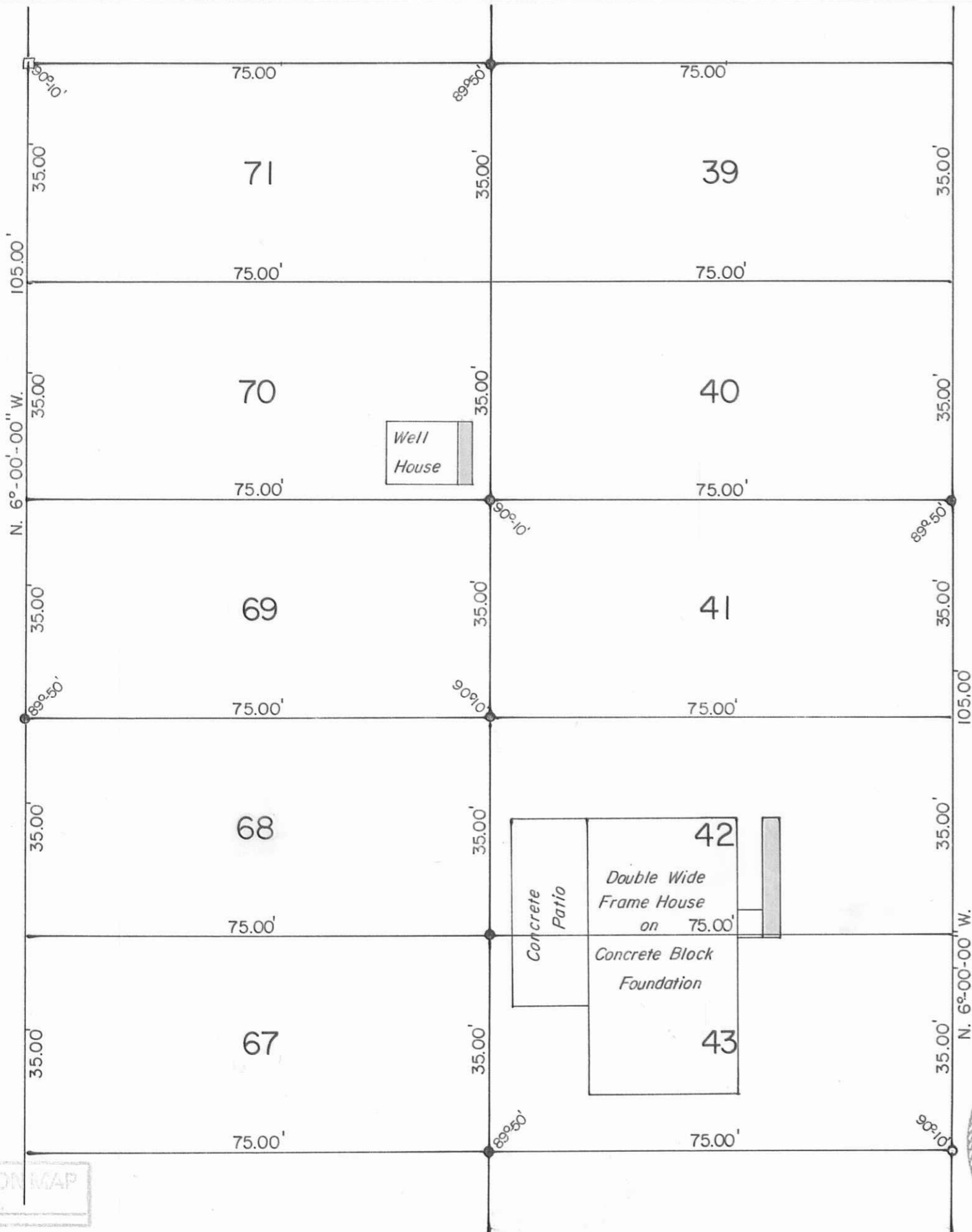


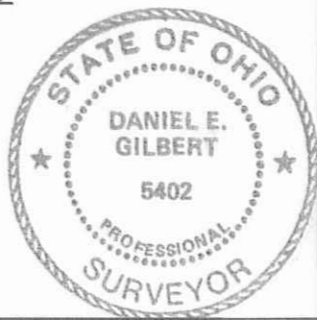
BLACK HAWK PATH - 35'

ASH STREET - 35'



SYMBOLS:
 ○ - 5/8" Rebar Fd.
 ● - 5/8 x 30 Rebars Set.
 □ - Harrow Tooth in tree root Set.

INDEXED ON MAP
4521



Survey of Lots No. 41, 42, 43 and 69, 70, 71. Chippewa Park Allot. No. 1, Stokes Township, Logan County, Ohio.		
SCALE: 1" = 20'	APPROVED BY:	DRAWN BY DEG
DATE: 10-25-1994		REVISED
 Daniel E. Gilbert, P.S. Reg. Sur. No. 5402		DRAWING NUMBER 094-063

S-045