

WALNUT AVE. - 40'

AVE. - 40'

- 40'

120.05'

Harrow Tooth Set

80.025'

Harrow Tooth Set

Page 29

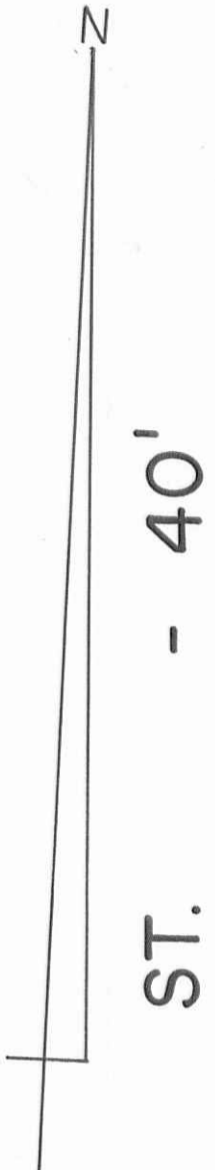
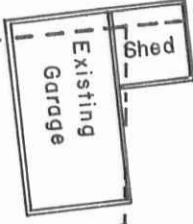
See F.B.No. 700

84°-00'

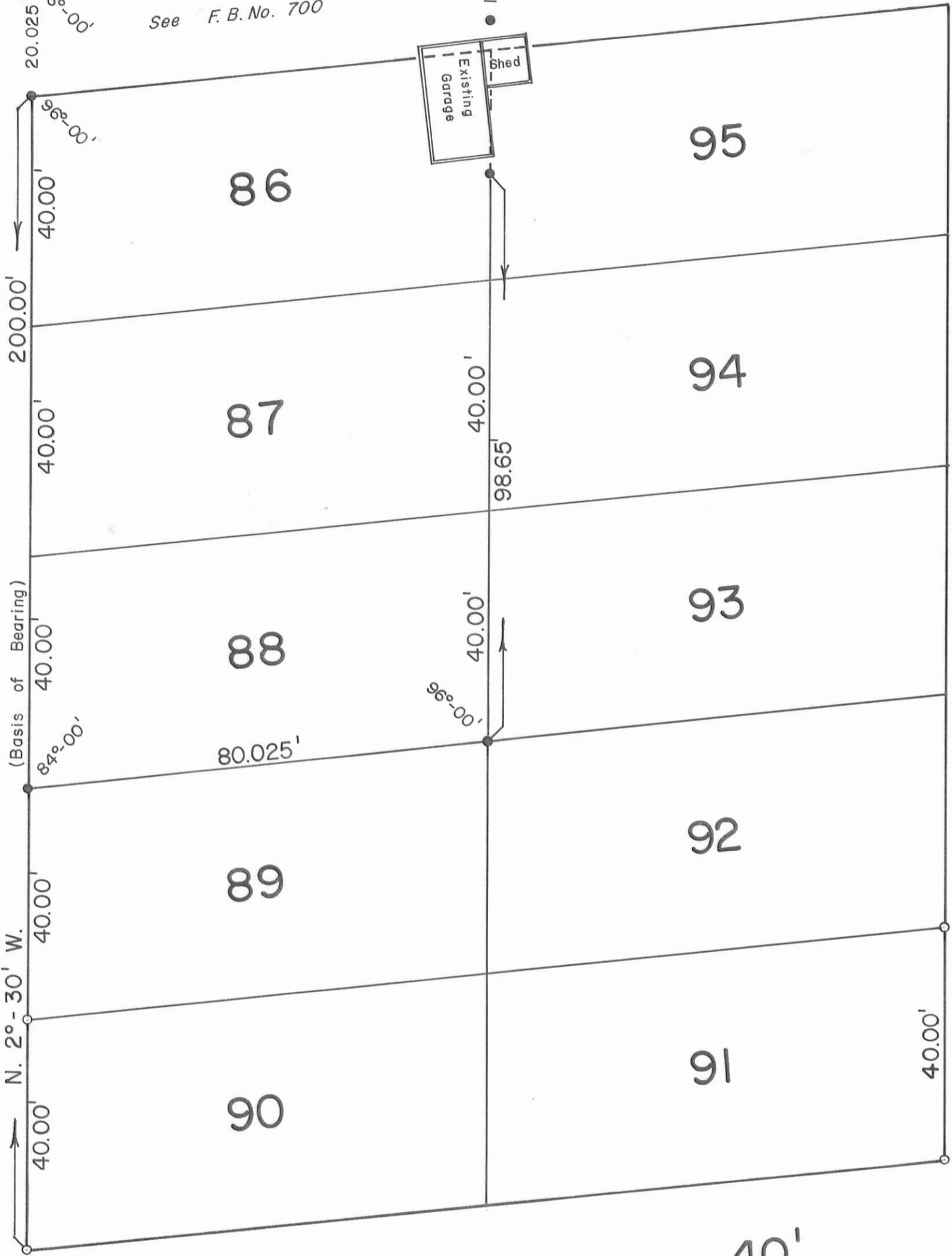
15.00'

20.025'

96°-00'



ASH ST. - 40'



ELM ST. - 40'

BEECH AVE. - 40'

- 40'

○ - 5/8" x 30" Rebars Found.
● - 5/8" x 30" Rebars Set.

Survey of Lots 86, 87, 88
Avondale Park Allotment No. 2
Stokes Township
Logan County, Ohio
June 16, 1989

Daniel E. Gilbert
Daniel E. Gilbert, P.S.
Reg. Sur. No. 5402
400 North Park Street
Bellefontaine, Ohio
43311



INDEXED ON MAP
7930

Scale: 1" = 20'
S-849