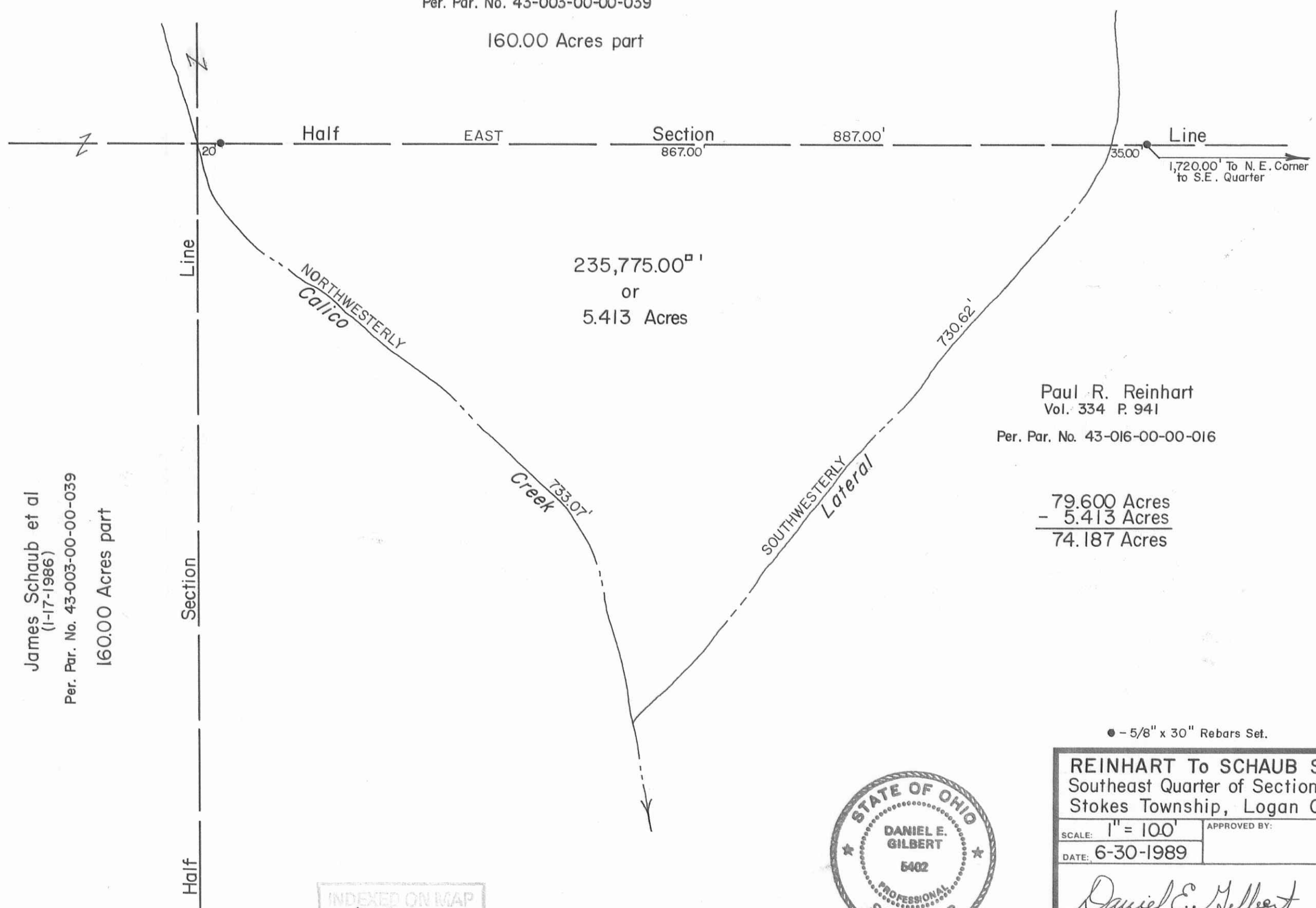


James Schaub et al  
 (1-17-1986)  
 Per. Par. No. 43-003-00-00-039  
 160.00 Acres part



235,775.00<sup>sq</sup>'  
 or  
 5.413 Acres

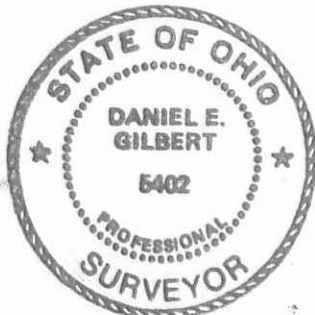
Paul R. Reinhart  
 Vol. 334 P. 941  
 Per. Par. No. 43-016-00-00-016

79.600 Acres  
 - 5.413 Acres  
 74.187 Acres

James Schaub et al  
 (1-17-1986)  
 Per. Par. No. 43-003-00-00-039  
 160.00 Acres part

● - 5/8" x 30" Rebars Set.

INDEXED ON MAP  
 7932



<b>REINHART To SCHAUB SURVEY</b> Southeast Quarter of Section No. 20, T.6S., R.8E. Stokes Township, Logan County, Ohio.		
SCALE: 1" = 100'	APPROVED BY:	DRAWN BY DEG
DATE: 6-30-1989		REVISED
<i>Daniel E. Gilbert</i> Daniel E. Gilbert, P.S. Reg. Sur. No. 5402		DRAWING NUMBER 089-038

S-055