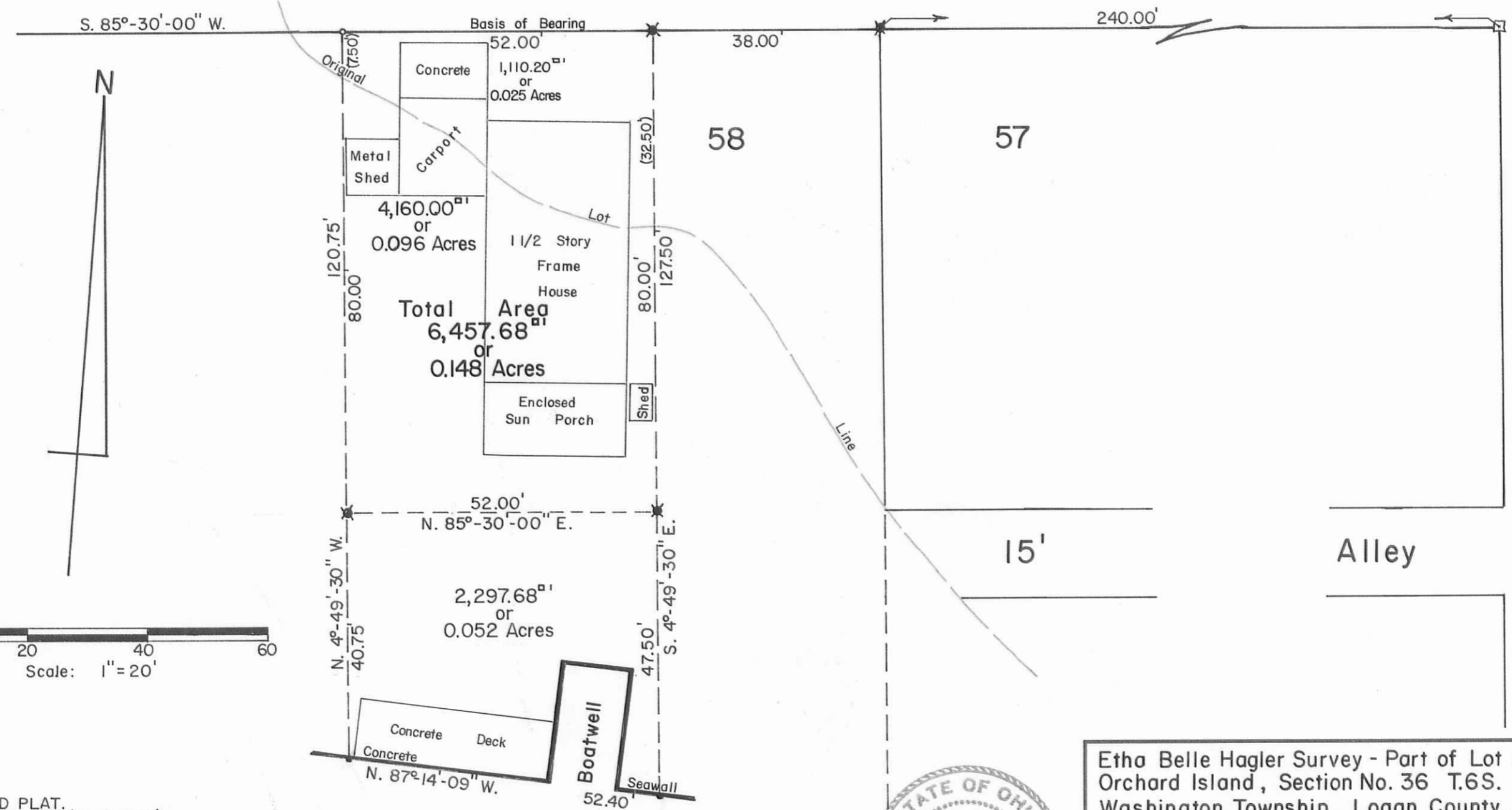
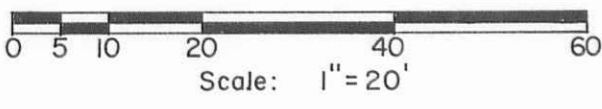


PARK STREET - 35'



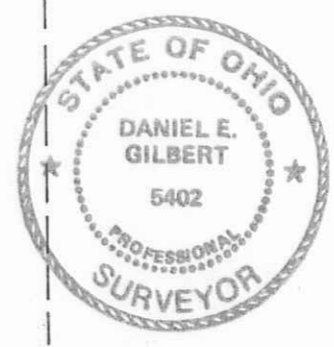
COTTAGE GROVE AVE. - 35'

Alley



References:  
 ORCHARD ISLAND PLAT.  
 Plat Cabinet A, Slide 219 (10-12-1910).  
 Etha Belle Hagler Deed.  
 Vol. No. 355 P. 810-811 (10-10-1974).

INDEXED ON MAP  
705



Etha Belle Hagler Survey - Part of Lot No. 58, Orchard Island, Section No. 36 T.6S. R.8E. Washington Township, Logan County, Ohio.		
SCALE: 1" = 20'	APPROVED BY:	DRAWN BY DEG.
DATE: 6-22-1993		REVISED
 Daniel E. Gilbert, P.S. Reg. Sur. No. 5402		DRAWING NUMBER 093-029

- SYMBOLS:
- - P.K. Nail Set.
  - - Steel Posts Fd.
  - - 2" x 2" C. I. Mon. Fd.
  - ✕ - 5/8" Rebars Fd.

S-889