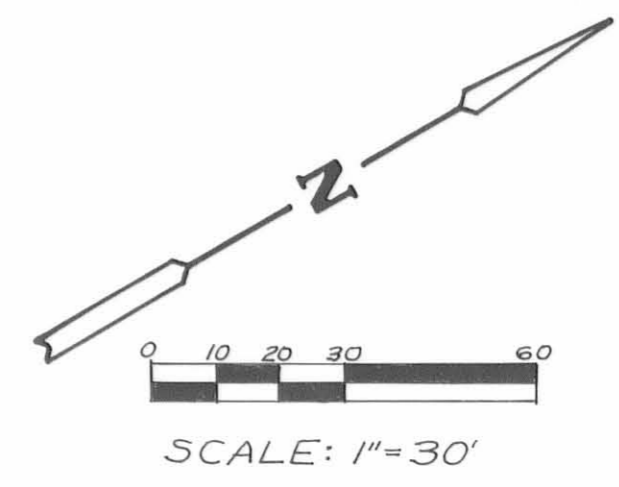
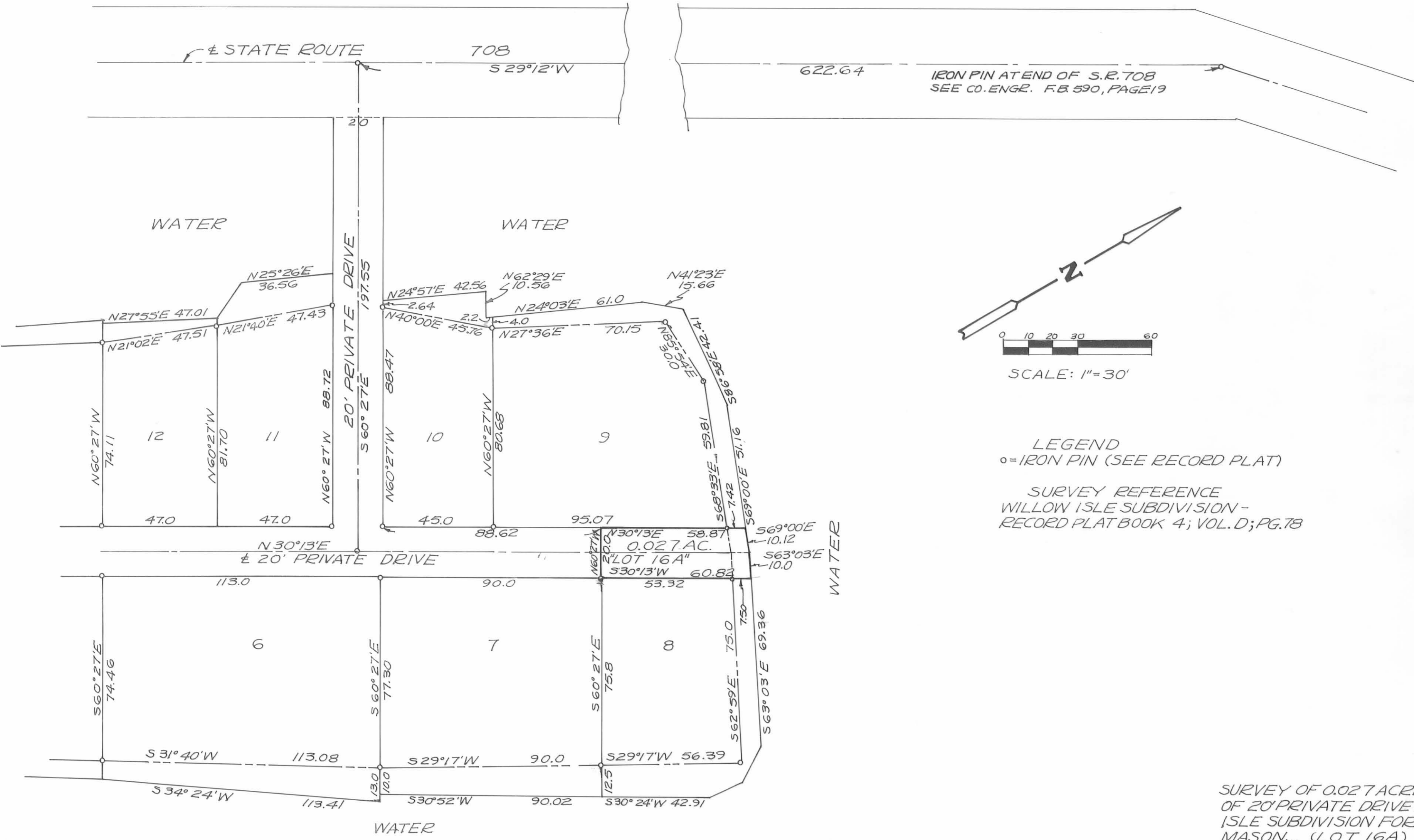


DATED: 15 SEP. 1981  
REV. 19 OCT. 1981



LEGEND  
 ○ = IRON PIN (SEE RECORD PLAT)

SURVEY REFERENCE  
 WILLOW ISLE SUBDIVISION -  
 RECORD PLAT BOOK 4; VOL. D; PG. 78

SURVEY OF 0.027 ACRE PART  
 OF 20' PRIVATE DRIVE IN WILLOW  
 ISLE SUBDIVISION FOR J. DON  
 MASON... (LOT 16A)



*Richard W. Klockner*  
 PROFESSIONAL SURVEYOR - #4370  
 RICHARD W. KLOCKNER & ASSOC., INC.  
 CIVIL ENGINEERING & SURVEYING  
 16 E. WATER ST.  
 TROY, OHIO 45373  
 (513) 339-5331