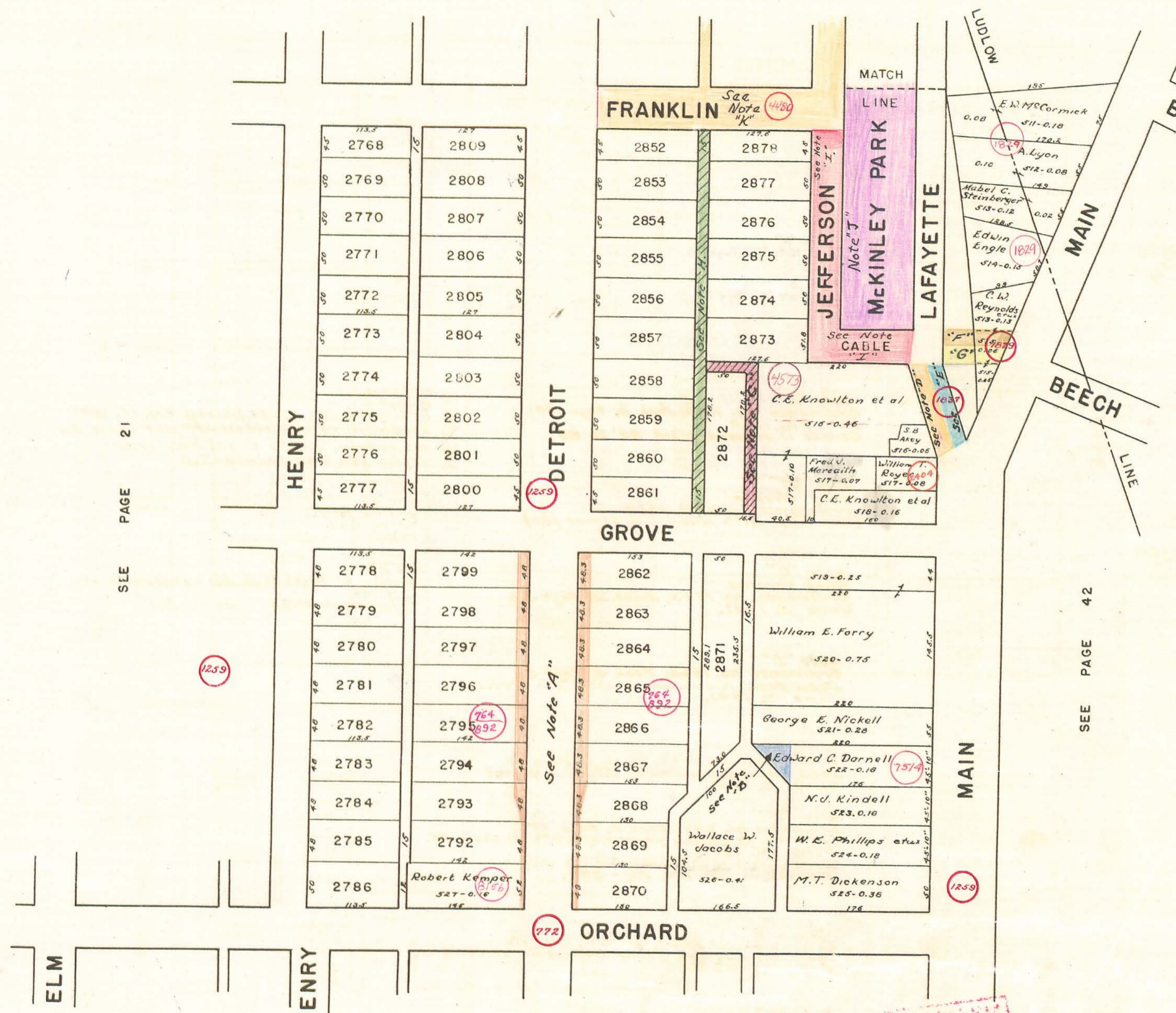


SEE PAGE 21

SEE PAGE 42

SEE PAGE 29



7.5	113.5	2768	7.5	127	2809	4.5
5.0		2769	7.5		2808	5.0
5.0		2770	7.5		2807	5.0
5.0		2771	7.5		2806	5.0
5.0		2772	7.5		2805	5.0
5.0	113.5	2773	7.5	127	2804	5.0
5.0		2774	7.5		2803	5.0
5.0		2775	7.5		2802	5.0
5.0		2776	7.5		2801	5.0
4.5	113.5	2777	7.5	127	2800	4.5

4.0	113.5	2778	1.5	142	2799	4.0
4.0		2779	1.5		2798	4.0
4.0		2780	1.5		2797	4.0
4.0		2781	1.5		2796	4.0
4.0		2782	1.5	764 592	2795	4.0
4.0	113.5	2783	1.5	142	2794	4.0
4.0		2784	1.5		2793	4.0
4.0		2785	1.5		2792	4.0
5.0	113.5	2786	1.5	142	Robert Kemper 527-0.10	5.0

5.0	153	2862	5.0	56.3		4.0
5.0		2863	5.0	40.3		4.0
5.0		2864	5.0	40.3		4.0
5.0		2865	5.0	40.3	764 592	4.0
5.0		2866	5.0	40.3		4.0
5.0		2867	5.0	40.3		4.0
5.0		2868	5.0	40.3		4.0
5.0		2869	5.0	40.3		4.0
4.0	153	2870	5.0	166.5		4.0

5.0	519-0.25		4.0
5.0	220		4.0
5.0	William E. Forry 520-0.75		4.0
5.0	220		4.0
5.0	George E. Nickell 521-0.20		4.0
5.0	220		4.0
5.0	Edward C. Darnell 522-0.10	7574	4.0
5.0	176		4.0
5.0	N.D. Kindell 523-0.10		4.0
5.0	485-10" 485-10"		4.0
5.0	485-10" 485-10"		4.0
5.0	W.E. Phillips et al 524-0.10		4.0
5.0	M.T. Dickenson 525-0.30		4.0
5.0	176		4.0

772

1259

1259

1259

4573

1829

1829

4480

