

JEFFERSON TOWNSHIP
VIRGINIA MILITARY SURVEY 3139

SCALE: 1"=10 CHAINS=660'

SEE PAGE 14

DRAWN OCTOBER 29, 1962
BY D.E.G.
FROM AERIAL PHOTO

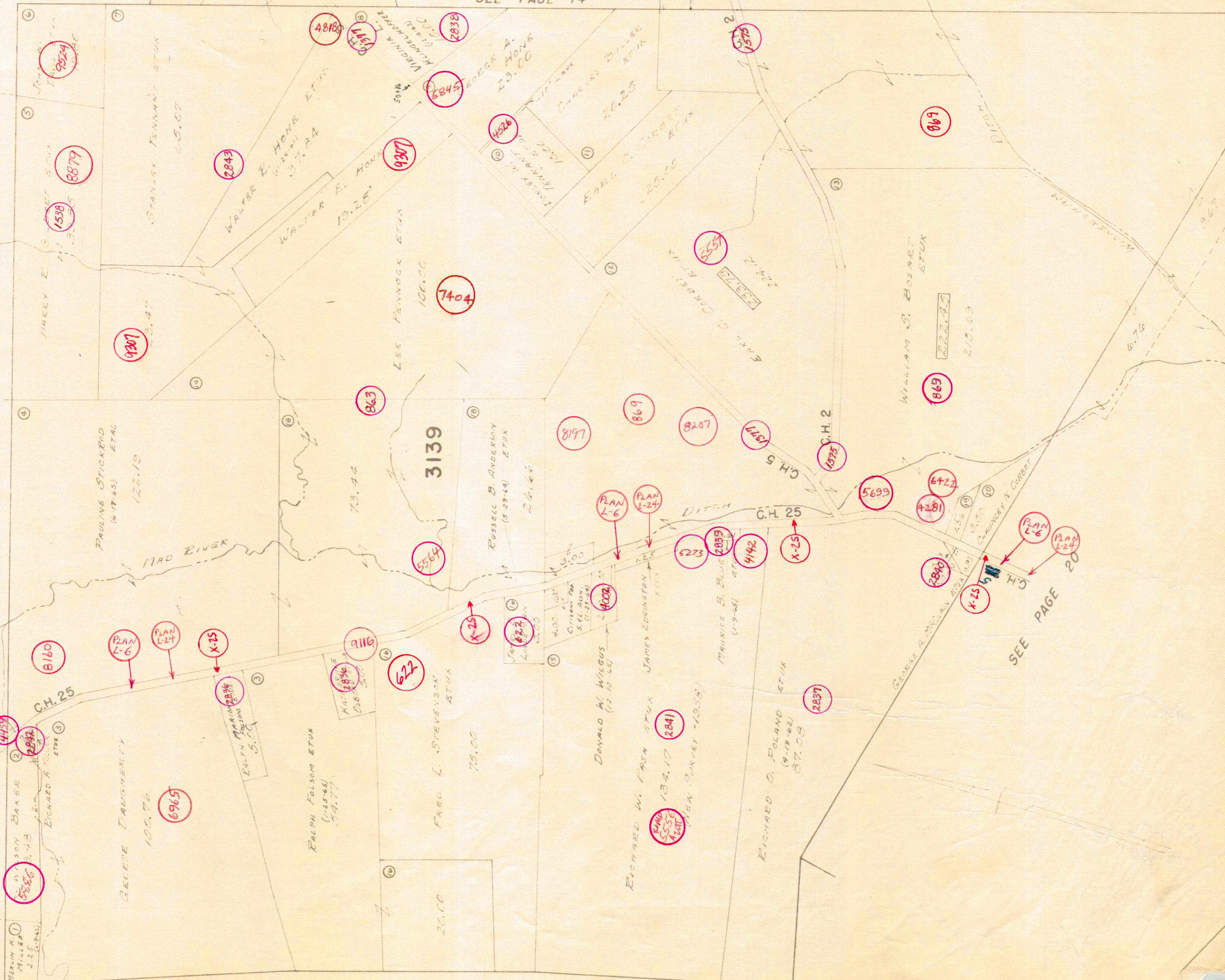
SEE PAGE 8

SEE PAGE 9

SEE PAGE 12

SEE PAGE 19

SEE PAGE 20



Map labels include owner names and acreage: MERLIN A. MILLER (2.25), WILSON BAKER (3.43), RICHARD A. MILLER (3.00), GEORGE TAUGHTNER (100.76), PAULINE STICKERD ETAL (6.17-65) (122.19), FRED L. STEVENSON (75.00), RALPH FOLSON (54.77), DONALD W. WILGUS (22.10-65), RICHARD W. KASH (134.17), RICHARD O. POLAND (87.08), GEORGE A. POLAND (87.08), JAMES EDGINGTON (2.00), DONALD W. WILGUS (2.00), MAURICE B. BLUDE (1.9-65), RUSSELL B. ANDERSON (5.29-64) (26.66), LEE FENNOCK (100.00), WALTER E. HONE (37.84), WALTER E. HONE (19.28), EARL C. CORBET (25.00), GEORGE A. HONE (23.00), CHARLES BILLER (20.25), WILLIAM S. BOSART (215.69), CHARNEY N. CORBET (13.6), and STANLEY TENNANT (45.07).