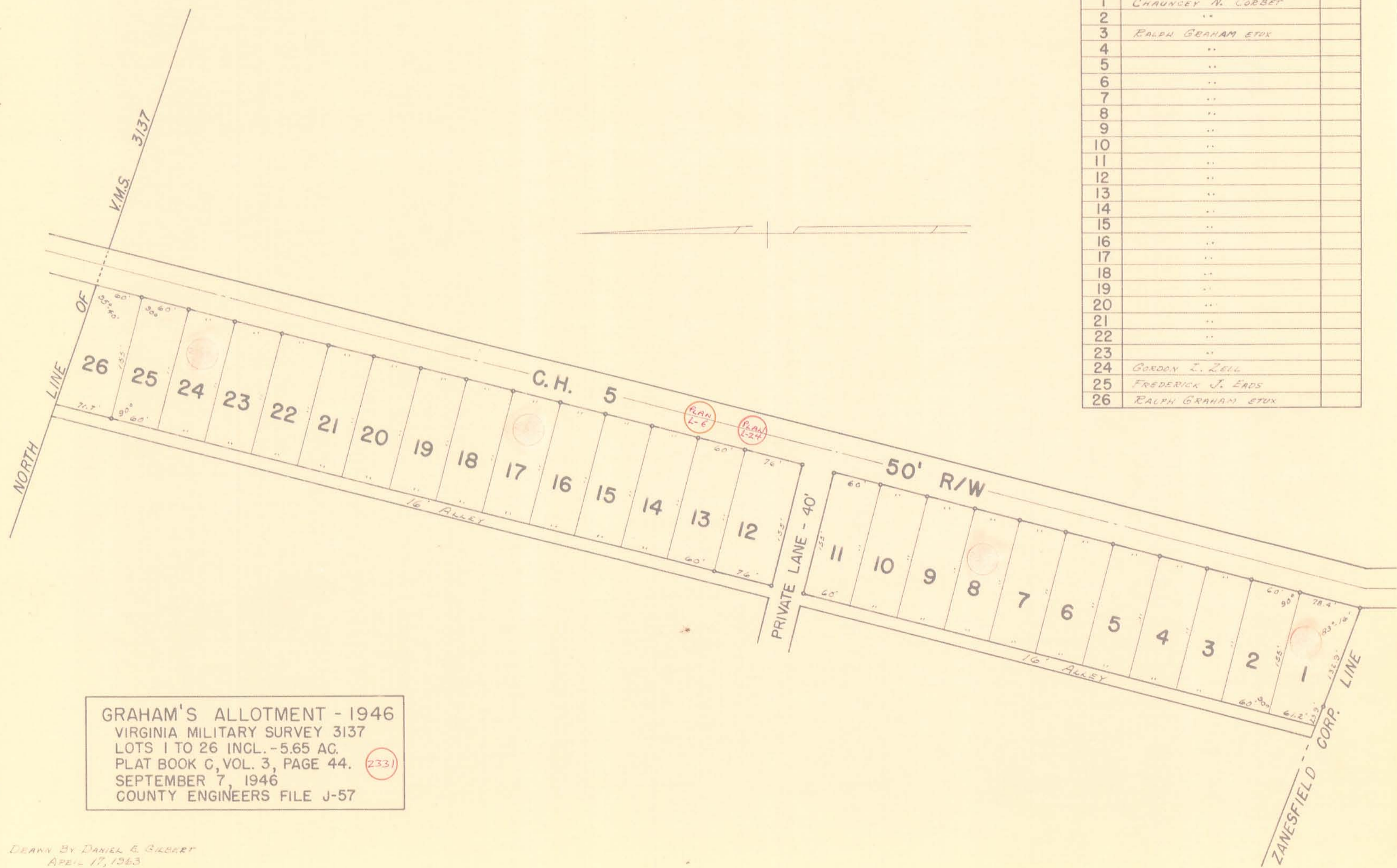


JEFFERSON TOWNSHIP
 VIRGINIA MILITARY SURVEY 3137 PART
 GRAHAM'S ALLOTMENT (2331)

SCALE: 1" = 100'

LOT	NAME	DATE
1	CHAUNCEY N. CORBET	
2	..	
3	RALPH GRAHAM ETUX	
4	..	
5	..	
6	..	
7	..	
8	..	
9	..	
10	..	
11	..	
12	..	
13	..	
14	..	
15	..	
16	..	
17	..	
18	..	
19	..	
20	..	
21	..	
22	..	
23	..	
24	GORDON L. ZELL	
25	FREDERICK J. EADS	
26	RALPH GRAHAM ETUX	



GRAHAM'S ALLOTMENT - 1946
 VIRGINIA MILITARY SURVEY 3137
 LOTS 1 TO 26 INCL. - 5.65 AC.
 PLAT BOOK C, VOL. 3, PAGE 44. (2331)
 SEPTEMBER 7, 1946
 COUNTY ENGINEERS FILE J-57

DEANN BY DANIEL E. GIBBERT
 APRIL 17, 1963