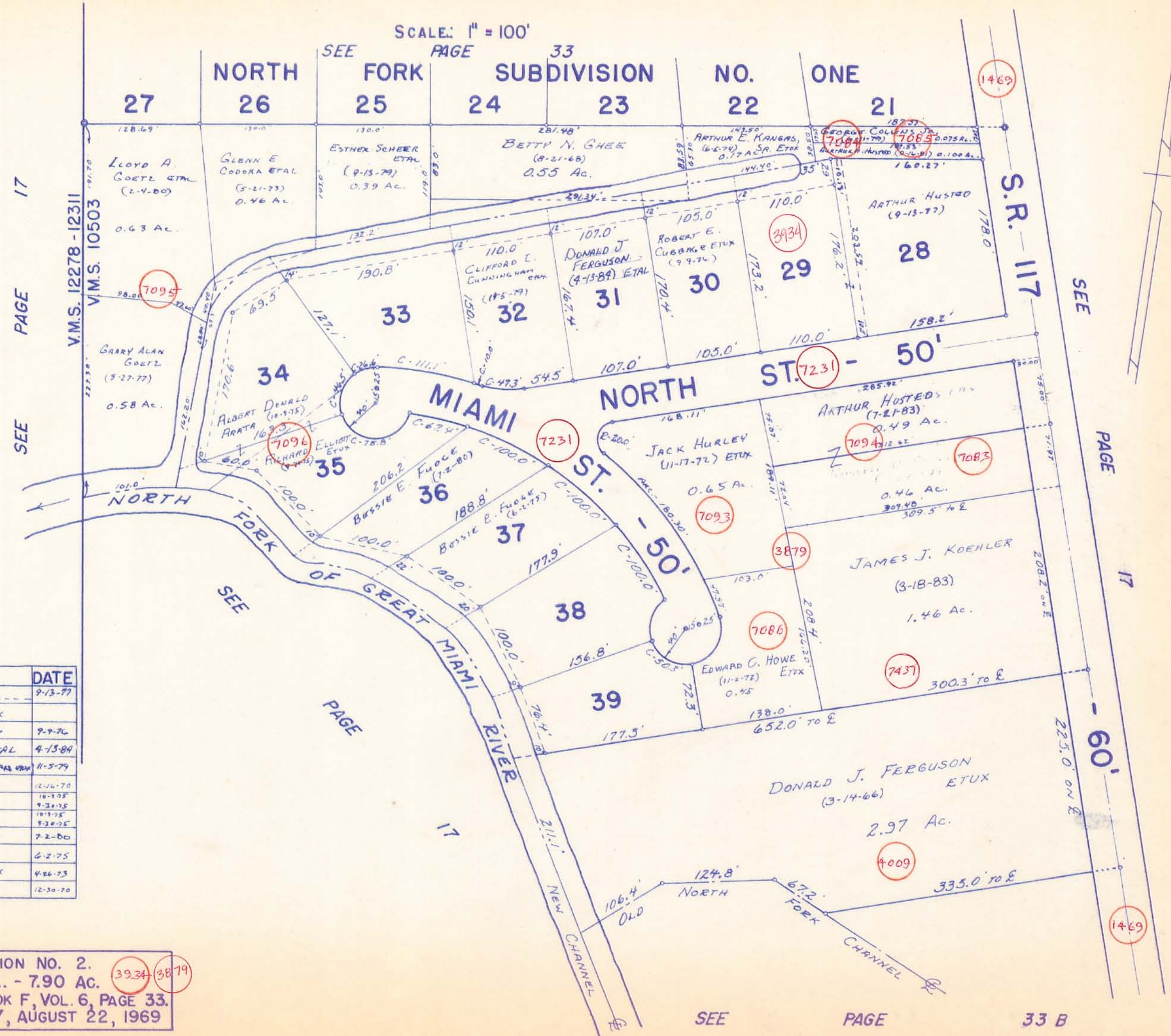


RICHLAND TOWNSHIP
NORTH FORK SUBDIVISION NO. 2
 VIRGINIA MILITARY SURVEY 10503



LOT	NAME	DATE
28	ARTHUR HUSTED	9-13-77
29	WELDON A. BEVERLY ETUX	
30	ROBERT E. GIBBONS ETUX	7-9-76
31	DONALD J. FERGUSON ETAL	4-13-84
32	CLIFFORD L. CUNNINGHAM ETUX	11-5-79
33	EDGAR E. CLIFFORD ETUX	12-16-70
34	ROBERT DONALD BRATA RICHARD ELLIOTT ETUX	10-1-78 9-31-78
35	ROBERT DONALD BRATA RICHARD ELLIOTT ETUX	10-1-78 9-31-78
36	BESSIE E. FUDGE	7-2-60
37	BESSIE E. FUDGE	6-2-75
38	LONNIE RUCKMAN ETUX	4-6-73
39	MELVIN SMITH ETUX	12-30-70

NORTH FORK SUBDIVISION NO. 2.
 LOTS 28 TO 39 INCL. - 7.90 AC. (3934) (3879)
 RECORDERS PLAT BOOK F, VOL. 6, PAGE 33.
 ENGINEERS FILE J-197, AUGUST 22, 1969

DRAWN BY DANIEL E. GILBERT - I.M.D. - 9-4-69