

# STOKES TOWNSHIP

## LAKESIDE ALLOTMENT

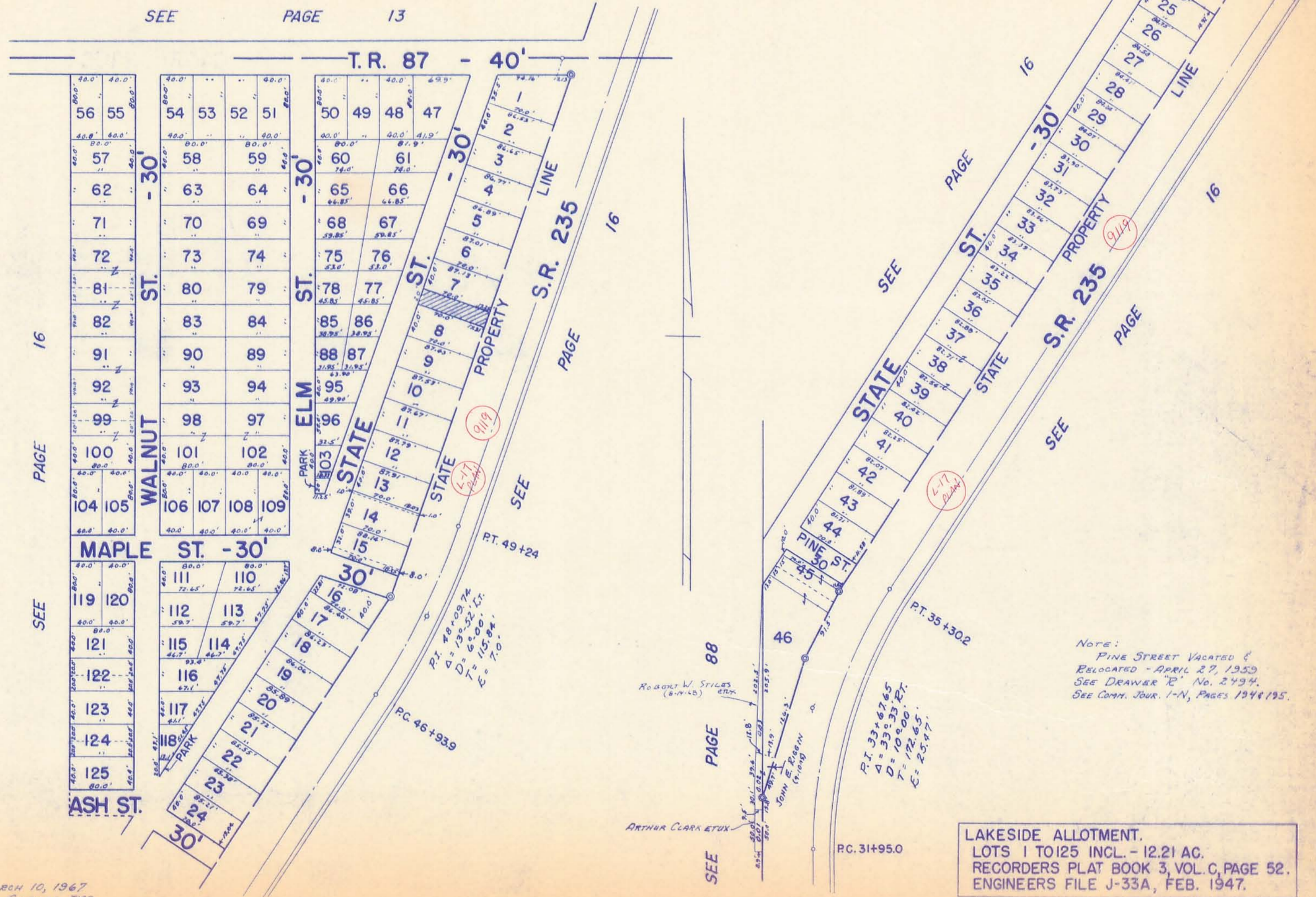
SEC. 27 T.6 S. R.8 E.

SCALE: 1" = 100'

48  
49A

ALSO  
SEE PAGE 50

SEE PAGE 13



NOTE:  
PINE STREET VACATED &  
RELOCATED - APRIL 27, 1959  
SEE DRAWER "R" No. 2494.  
SEE COMM. JOUR. 1-N, PAGES 194 & 195.

LAKESIDE ALLOTMENT.  
LOTS 1 TO 125 INCL. - 12.21 AC.  
RECORDERS PLAT BOOK 3, VOL. C, PAGE 52.  
ENGINEERS FILE J-33A, FEB. 1947.

DRAWN: MARCH 10, 1967  
DANIEL E. GILBERT, TMD.