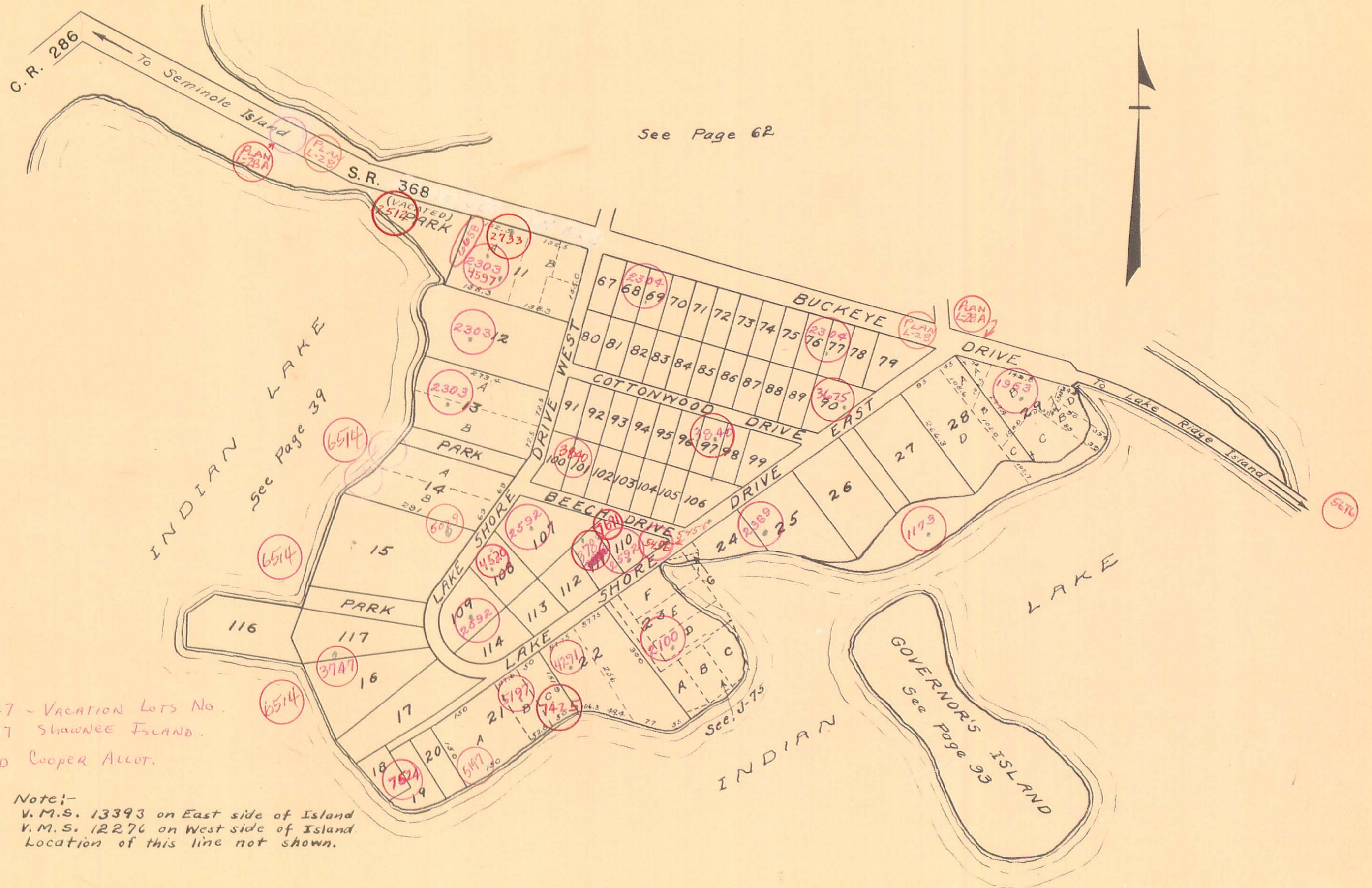


STOKES TOWNSHIP

VIRGINIA MILITARY SURVEY 12276  
VIRGINIA MILITARY SURVEY 13393

SCALE 200 FEET TO THE INCH

SHAWNEE ISLAND (S. PART)



See Page 62

See Page 39

See Page 93

Note:  
No. 3747 - Vacation Lots No.  
16, 116, 117 Shawnee Island.  
Replatted Cooper Allot.

Note:-  
V.M.S. 13393 on East side of Island  
V.M.S. 12276 on West side of Island  
Location of this line not shown.