

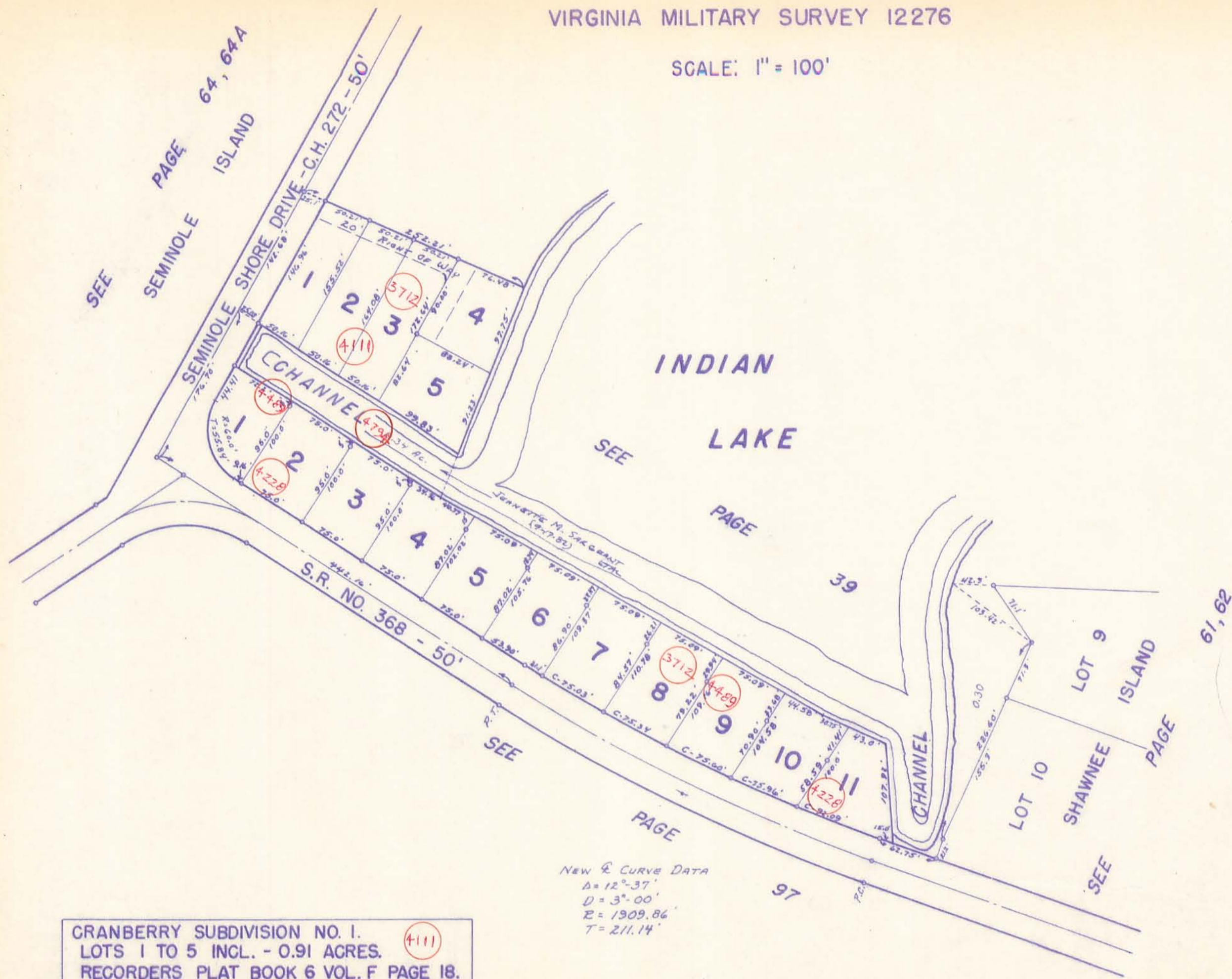
STOKES TOWNSHIP

CRANBERRY SUBDIVISIONS NO. 1 & 2

VIRGINIA MILITARY SURVEY 12276

SCALE: 1" = 100'

64C



CRANBERRY SUBDIVISION NO. 1. (4-111)
 LOTS 1 TO 5 INCL. - 0.91 ACRES.
 RECORDERS PLAT BOOK 6 VOL. F PAGE 18.
 ENGINEERS FILE NO. J-187, JULY 1967.

CRANBERRY SUBDIVISION NO. 2. (4-228)
 LOTS 1 TO 11 INCL. - 1.84 ACRES.
 RECORDERS PLAT BOOK 6 VOL. F PAGE 24.
 ENGINEERS FILE NO. J-190, APRIL 1968.

NEW 4 CURVE DATA
 $\Delta = 12^{\circ} 37'$
 $D = 3^{\circ} 00'$
 $R = 1909.86'$
 $T = 211.14'$

SUBDIVISION NO. 1

LOT	NAME	DATE
1	JEANETTE M. SARGENT	9-17-60
2	CHARLES H. GREER ETUX	6-13-60
3	ELMO E. HAGELBERGER ETUX	9-17-60
4	CORRINE R. FRANCIS	4-2-61
5	LLOYD CRAMES ETAL	4-11-68

SUBDIVISION NO. 2

LOT	NAME	DATE
1	JAMES V. BAKER ETAL	8-4-73
2	JAMES S. LAKE ETUX	5-9-68
3	JACK G. NEWHOUSE ETUX	3-5-73
4	THOMAS E. GIBSON ETAL	8-3-80
5	CHARLES H. GRANT ETUX	7-21-64
6	CRANBERRY CONDOMINIUM	10-72
7	"	"
8	"	"
9	"	"
10	"	"
11	"	"

Drawn: October 24, 1967.
 By DANIEL E. SILBERT, T.M.D.