

STOKES TOWNSHIP  
SECTION 34 TOWN 6 S. RANGE 8 E.

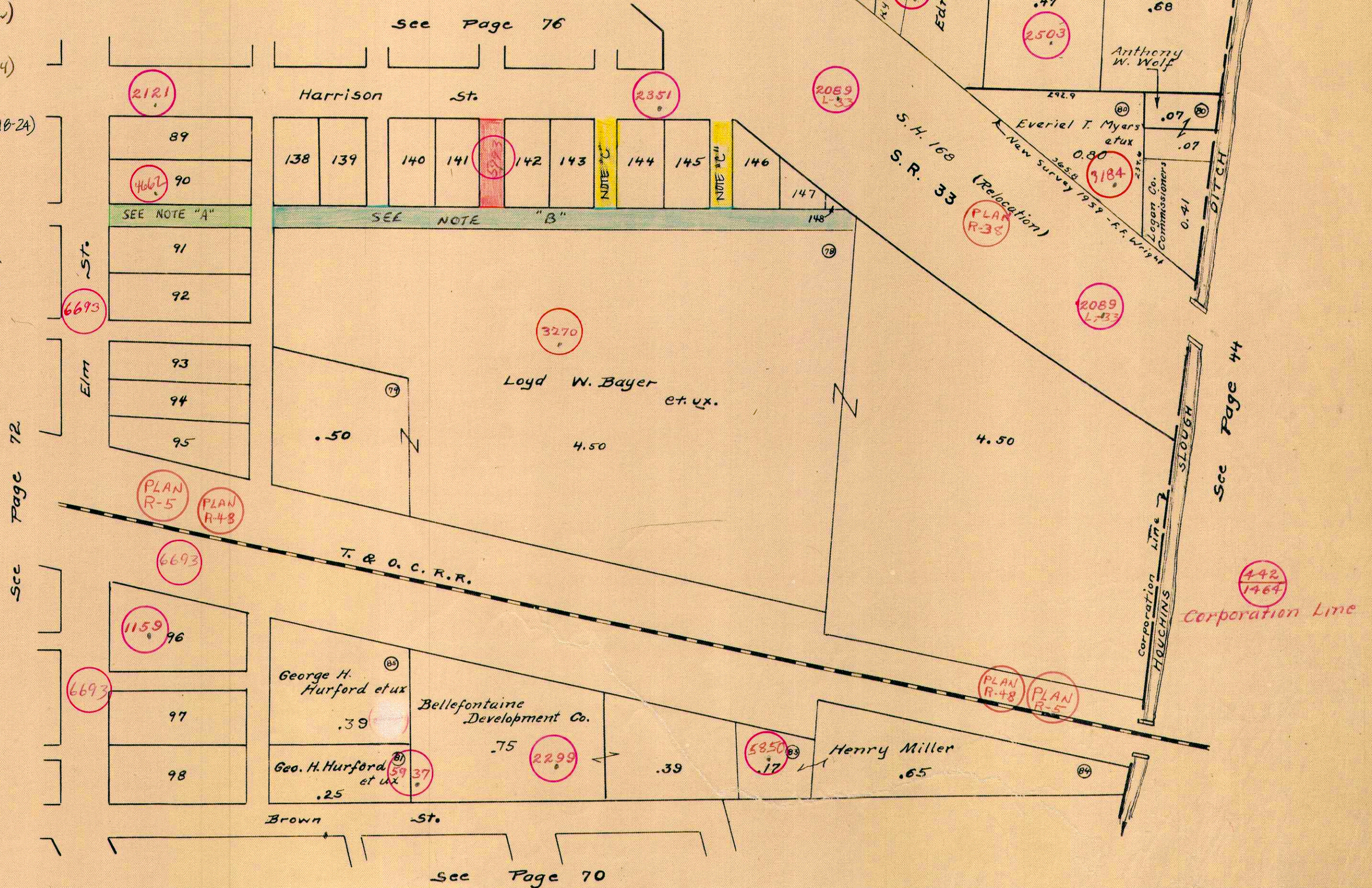
SCALE 100 FEET TO THE INCH

LAKEVIEW (PART)

NOTE "A" ALLEY VACATION (ORDINANCE 90-9-LAKEVIEW)  
ON 4-16-1989 (SEE R-4662)

NOTE "B" ALLEY VACATED (ORDINANCE NO. 05-14)  
ON 12-19-2005 (SEE R-5993)

NOTE "C" ALLEY VACATIONS (ORDINANCE NO. 2018-24)  
1-22-19 (SEE R-5993)



LOTS 89 TO 98 COUPLES SECOND  
LOTS 138 TO 148 COUPLES THIRD

See Note Page 72