

STOKES TOWNSHIP
KIA-WAH WOODS SUBDIVISION NO. 1-2

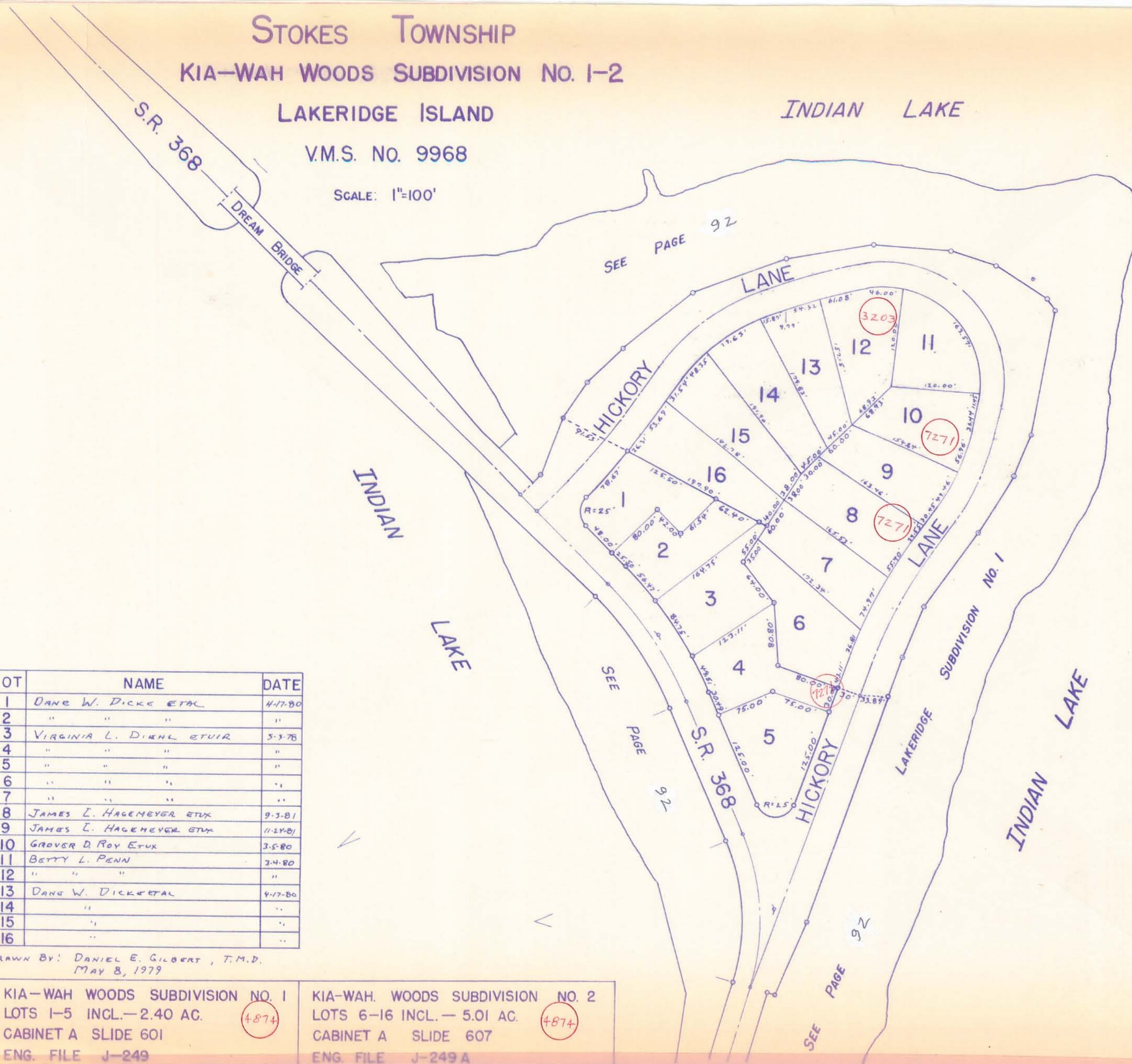
92-A

LAKERIDGE ISLAND

INDIAN LAKE

V.M.S. NO. 9968

SCALE: 1"=100'



LOT	NAME	DATE
1	DANE W. DICKE ETAL	4-7-80
2	" " "	"
3	VIRGINIA L. DIKHL ETUIR	5-3-78
4	" " "	"
5	" " "	"
6	" " "	"
7	" " "	"
8	JAMES E. HAGEMeyer ETUX	9-3-81
9	JAMES E. HAGEMeyer ETUX	11-24-81
10	GROVER D. ROY ETUX	3-5-80
11	BETTY L. PENN	3-4-80
12	" " "	"
13	DANE W. DICKE ETAL	4-7-80
14	" " "	"
15	" " "	"
16	" " "	"

DRAWN BY: DANIEL E. GILBERT, T.M.D.
MAY 8, 1979

KIA-WAH WOODS SUBDIVISION NO. 1
LOTS 1-5 INCL. - 2.40 AC. (4874)
CABINET A SLIDE 601
ENG. FILE J-249

KIA-WAH WOODS SUBDIVISION NO. 2
LOTS 6-16 INCL. - 5.01 AC. (4874)
CABINET A SLIDE 607
ENG. FILE J-249A