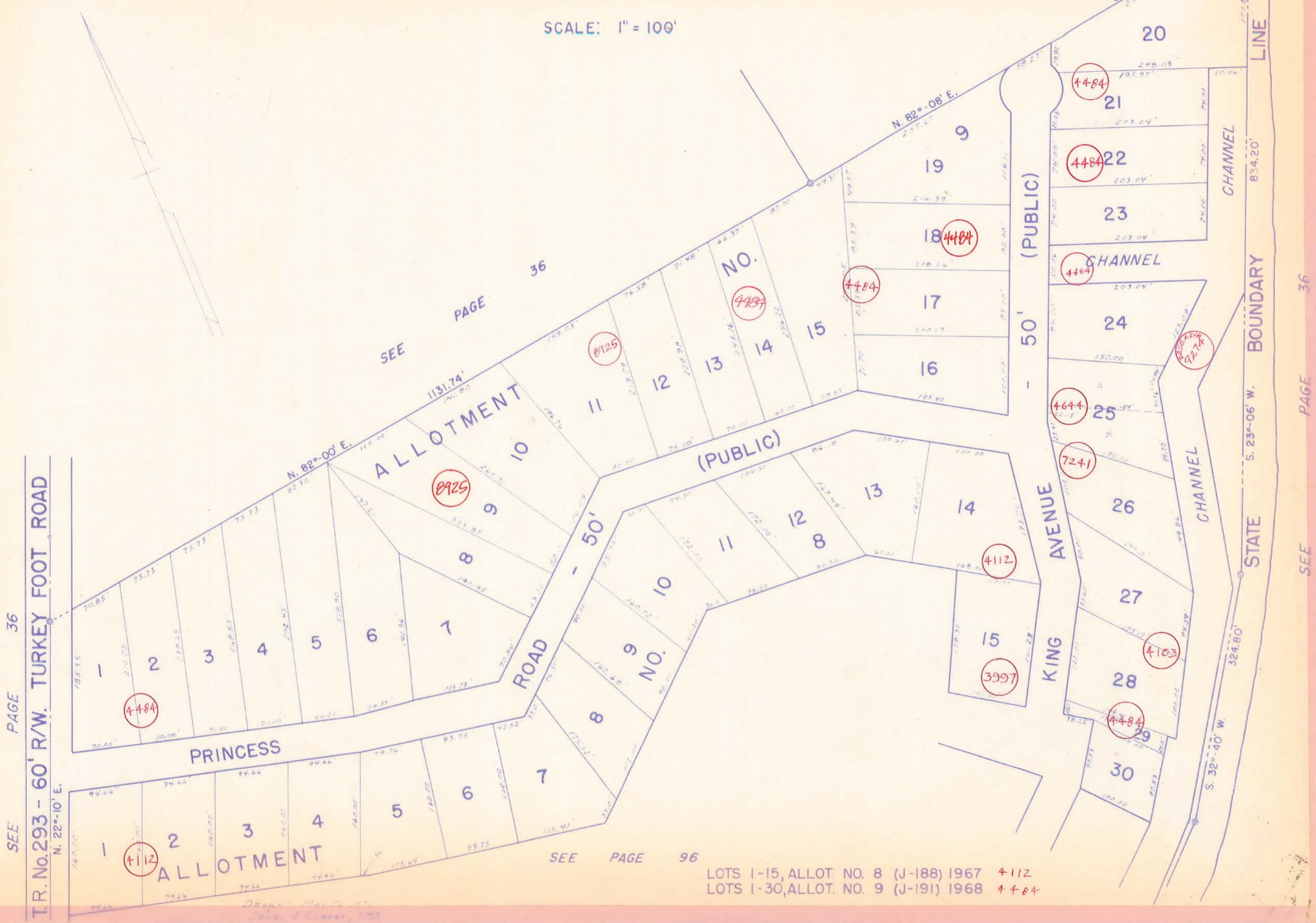


STOKES TOWNSHIP
VIRGINIA MILITARY SURVEY 12277
KING'S LANDING ALLOTMENTS

95A

SCALE: 1" = 100'



SEE PAGE 36
T.R. No. 293 - 60' R/W. TURKEY FOOT ROAD
N. 22°-10' E.

SEE PAGE 36

SEE PAGE 96

LOTS 1-15, ALLOT. NO. 8 (J-188) 1967 4112
LOTS 1-30, ALLOT. NO. 9 (J-191) 1968 4484

36

PAGE

SEE