

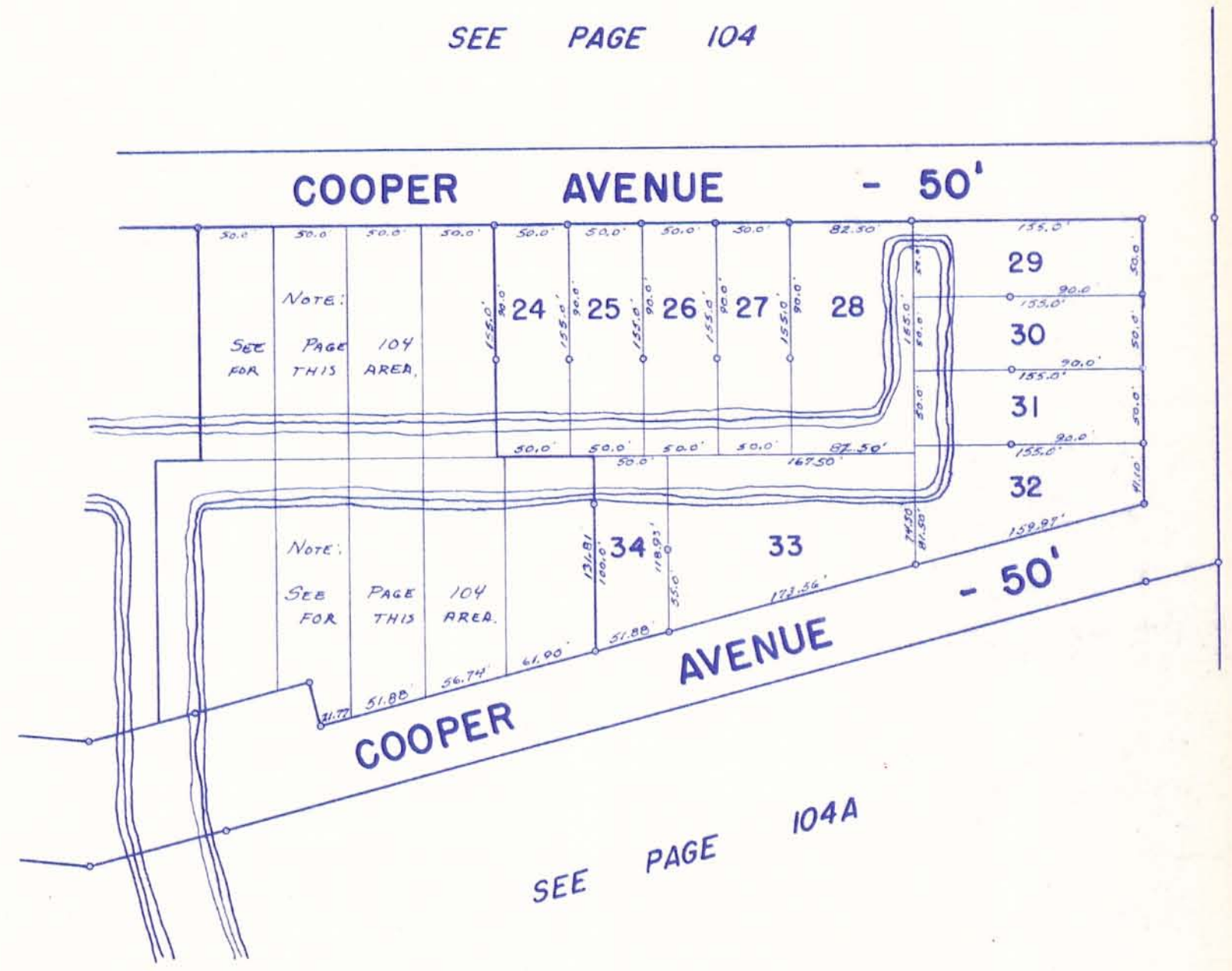
STOKES TOWNSHIP  
 HOLIDAY SHORES ALLOTMENT NO. 2  
 SEC. 23 - T.6S. - R.8E. PART

SCALE: 1" = 100'

SEE PAGE 104

LOT	NAME	DATE
24	LOWELL E. ALEXANDER ETAL	4-1-74
25		
26	IRENE H. FAHREN KRUG	10-9-79
27	JACK G. WAGNER ETUX	7-17-76
28	JOSEPH A. SCHMALZ ETUX	4-16-80
29		
30		
31		
32		
33		
34	HERBERT E. EBERENZ ETUX	7-29-83

SEE PAGES 104 - 105



SEE PAGE 14

SEE PAGE 104A

HOLIDAY SHORES ALLOTMENT NO. 2.  
 LOTS 24 TO 34 INCLUSIVE.  
 RECORDERS PLAT BOOK 6, VOL. F, PAGE 50.  
 ENGINEERS FILE J-211, SEPTEMBER 13, 1972.