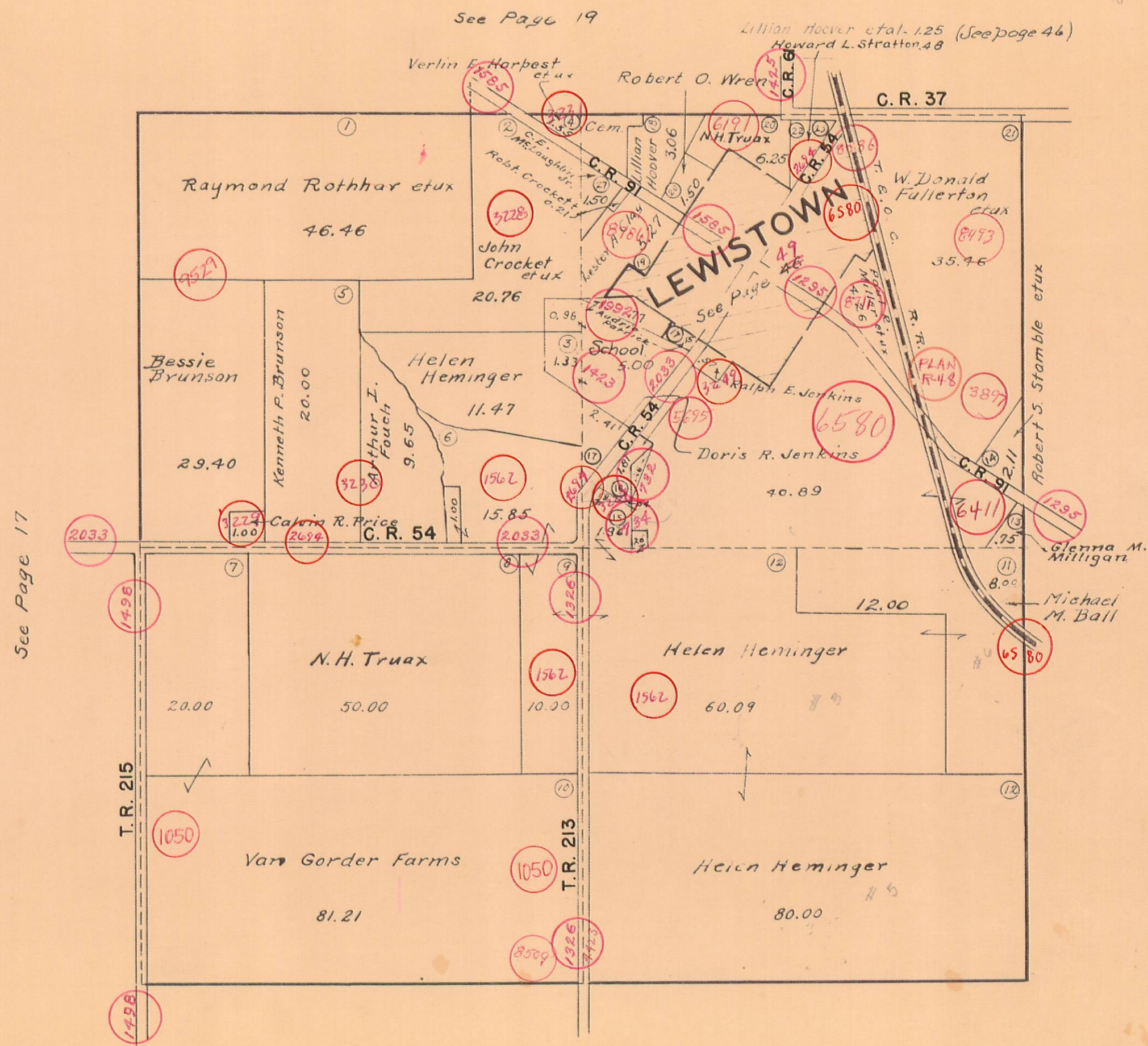


WASHINGTON TOWNSHIP  
SECTION 24 TOWN 7 S. RANGE 8 E.

SCALE 10 CHAINS TO THE INCH



Board of Education  
Exempt List  
1.33 Ac.  
.77 Ac.  
.98 Ac.

210.00

See Page 19

Lillian Hoover et al. 1.25 (See page 46)  
Howard L. Stratton.48

Verlin E. Harbest et ux

Robert O. Wren

C. R. 37

Raymond Rothbar et ux  
46.46

Bessie  
Brunson  
29.40

Helen  
Heminger  
11.47

Kenneth P. Brunson  
20.00

Arthur I.  
Fouch  
9.65

Calvin R. Price  
1.00

N. H. Truax  
50.00

Helen Heminger  
60.09

Van Gorder Farms  
81.21

Helen Heminger  
80.00

John  
Crocket  
et ux  
20.76

Doris R. Jenkins  
40.89

Glenna M.  
Milligan

Michael  
M. Ball  
8.00

Robert S. Stamble et ux

See Page 17

See Page 15

See Page 13