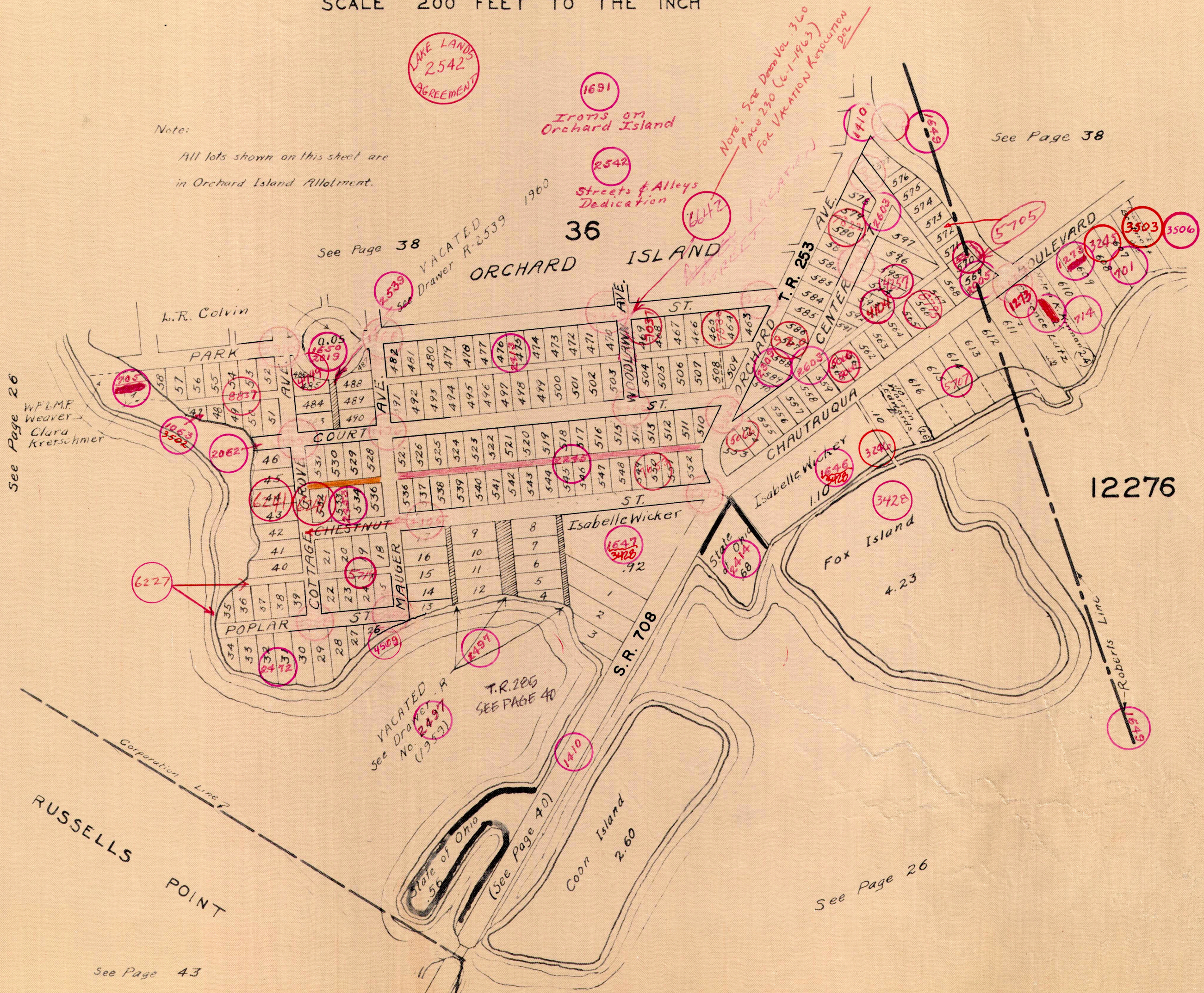


SECTION 36 TOWN 6 S. RANGE 8 E.
VIRGINIA MILITARY SURVEY 12276
SCALE 200 FEET TO THE INCH

Note:
All lots shown on this sheet are
in Orchard Island Allotment.



See Page 26

WFLMP
Weaver
Clara
Kretschmer

L.R. Colvin

See Page 38

VACATED
Drawer R-2539

ORCHARD ISLAND

Streets & Alleys Dedication

Note: See Deed Vol 360
Page 230 (6-1-1963)
for Vacation Resolution 282

See Page 38

12276

See Page 37

RUSSELLS POINT

See Page 43

VACATED R
See Deed No (1959)

T.R. 285
SEE PAGE 40

(See Page 40)

Coon Island
2.60

See Page 26

Robert's Line