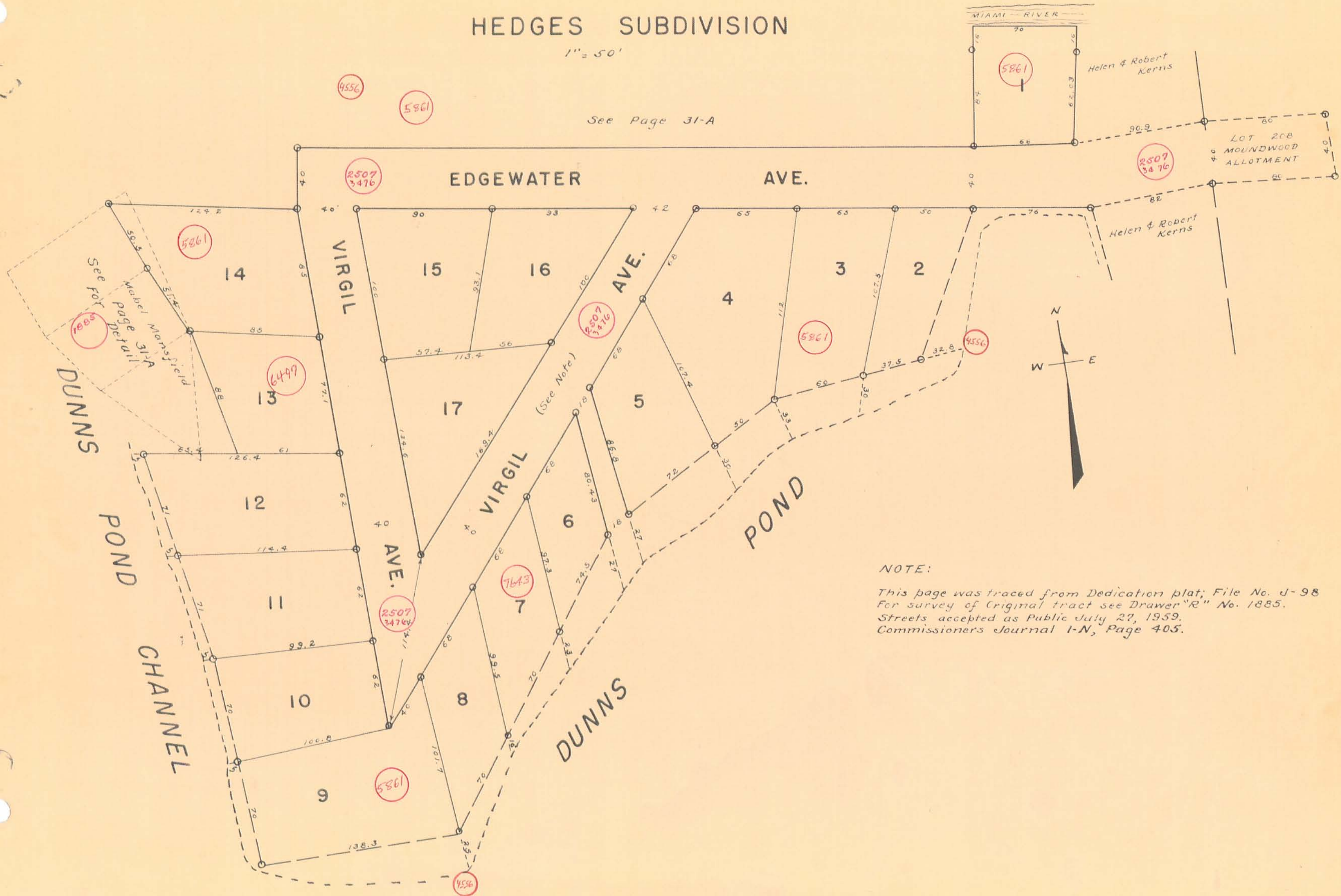


VIRGINIA MILITARY SURVEY 9925-9946-10121

HEDGES SUBDIVISION

1" = 50'

See Page 31-A



NOTE:

This page was traced from Dedication plat; File No. J-98  
 For survey of Original tract see Drawer "R" No. 1885.  
 Streets accepted as Public July 27, 1959.  
 Commissioners Journal I-N, Page 405.