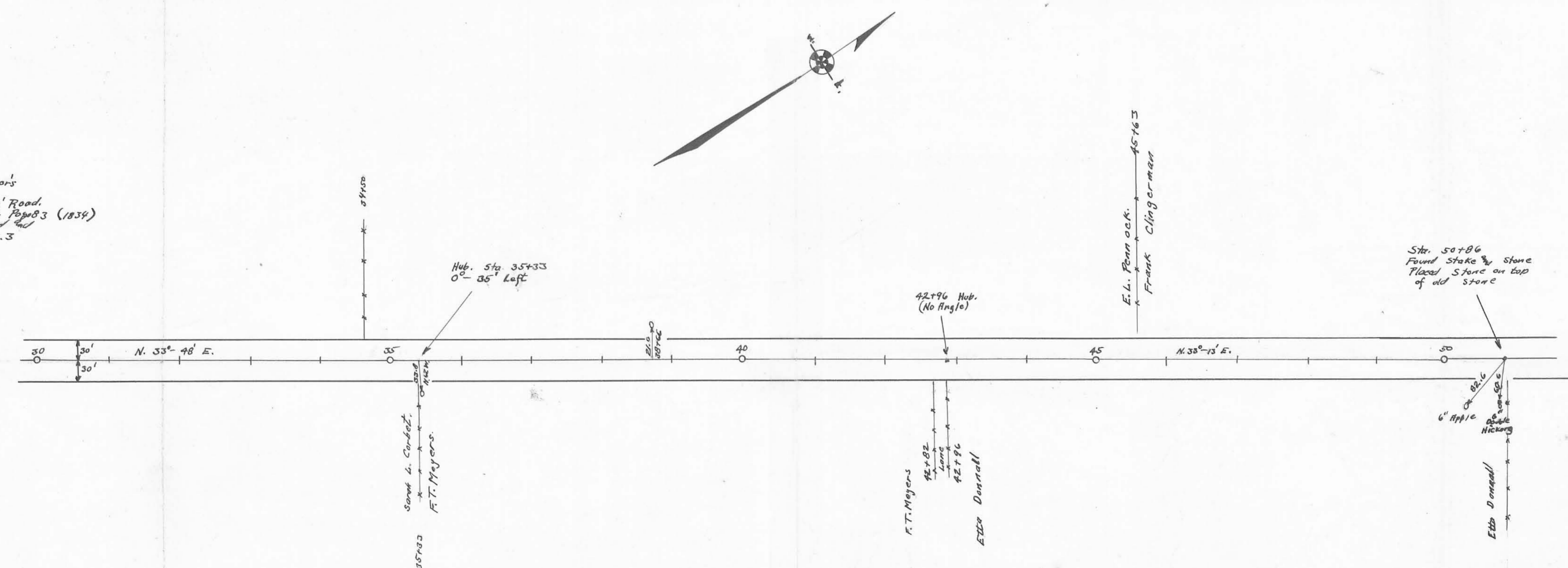


Field notes in Logan County Surveyors
Book No. 559 Pages 41 to 43.
Stakes placed 30' from E for a 60' Road
60' Road Commissioners Journal No. 4, p. 3003 (1839)
60' Pike West Liberty - 2005' Road and
Kentucky Pike - 2005' Road No. 3
Page 177 (1873)



Drawn By
G. H. W. [Signature]

INDEXED ON MAP