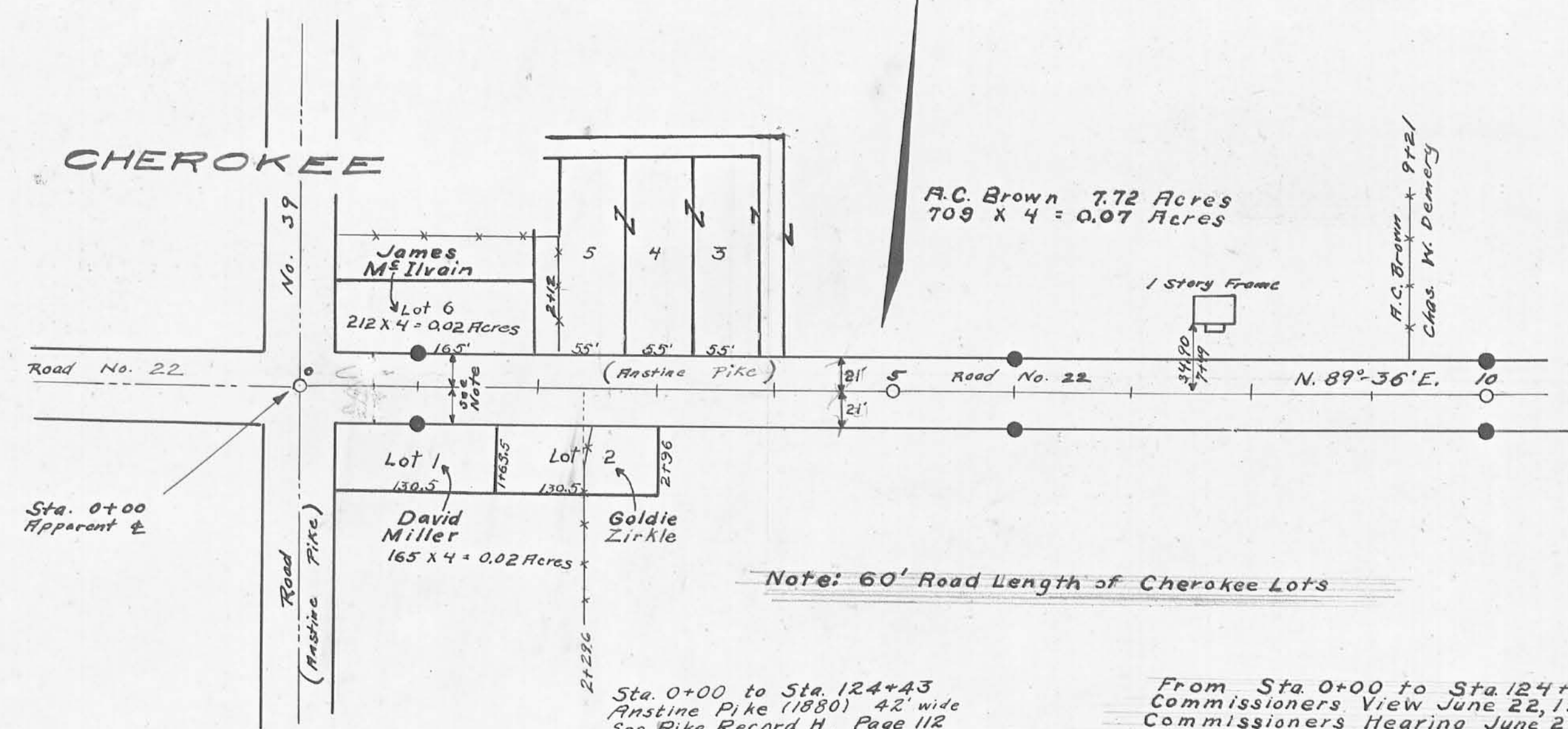


CHEROKEE



Note: 60' Road Length of Cherokee Lots

Field notes Logan County Surveyors
 Book No. 557 Pages 85 and 86
 " " Pages 71 to 73

Sta. 0+00 to Sta. 124+43
 Restine Pike (1880), 42' wide
 See Pike Record H, Page 112
 See Free Turnpike Record 3, Page 586

Sta. 124+43 to Sta. 212+45.5
 Monuments set 50'

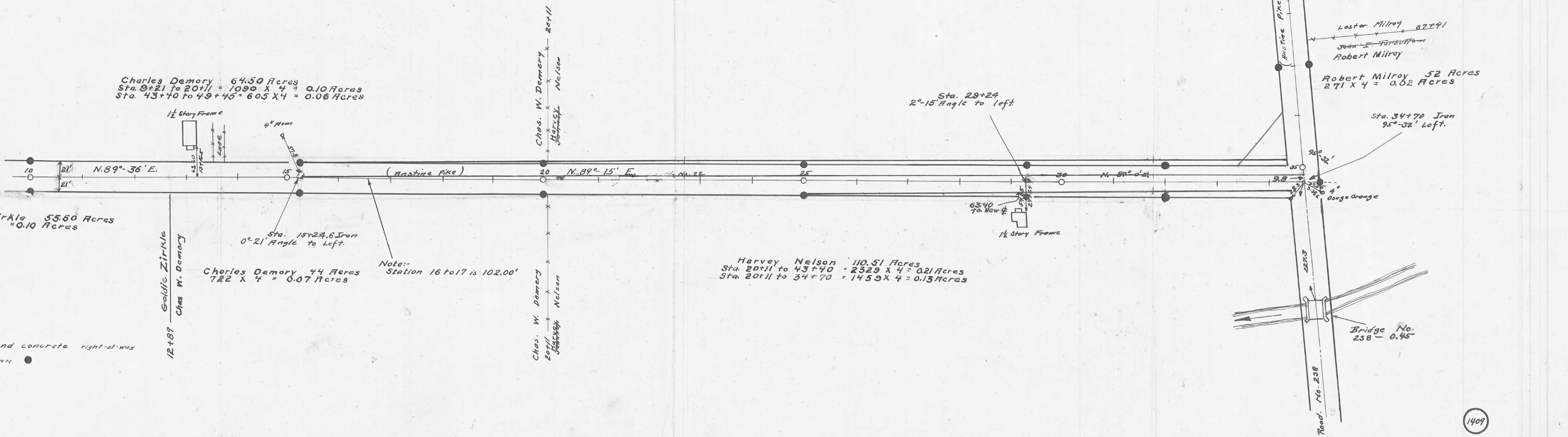
Sta. 212+45.5 to Sta. 222+83
 Old S.H. 226 60' wide

Sta. 222+83 to Sta. 233+78
 Monuments set 50'

Sta. 233+78 to Sta. 368+83
 Harper Rushsylvania Pike (1882) 50' wide
 See Free Turnpike Record 6 Page 583

From Sta. 0+00 to Sta. 124+43 to obtain 50' Right of Way
 Commissioners View June 22, 1936
 Commissioners Hearing June 29, 1936
 Commissioners Hearing on Damages July 23, 1936

ROAD 22



Resurveyed 1934 and concrete right-of-way posts set as shown

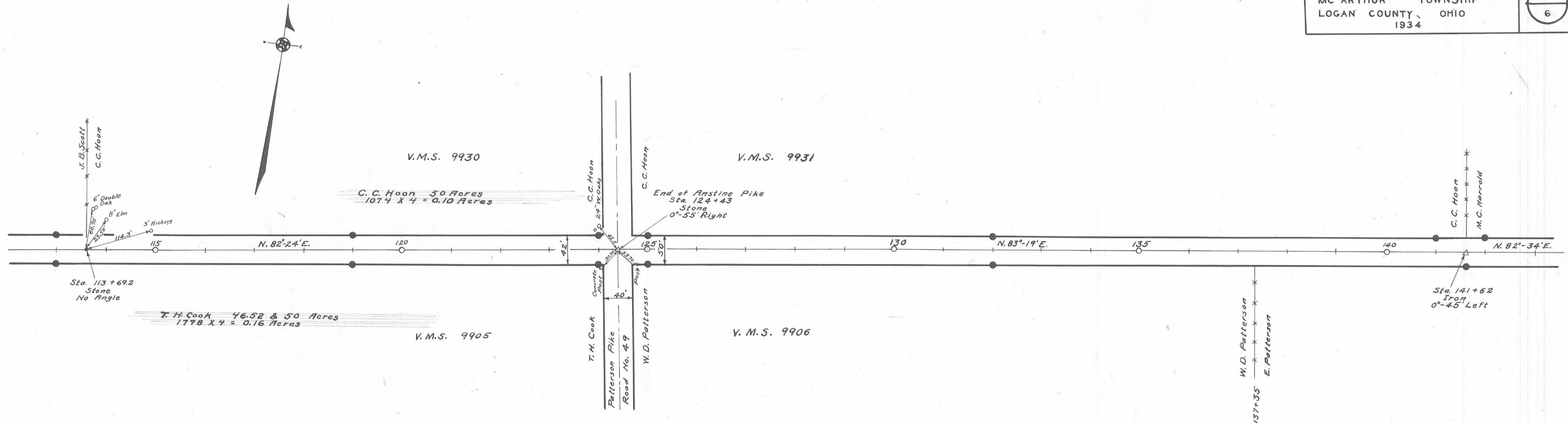
Drawn by
 H. W. W. C. L.

1409

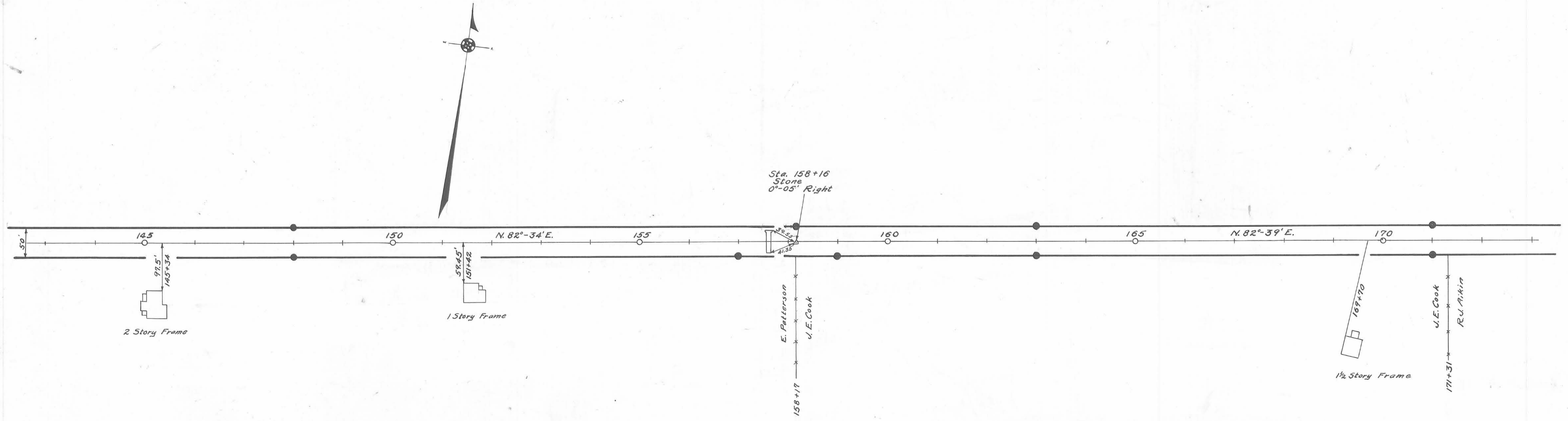
INDEXED ON MAP

X-22B

X-22B

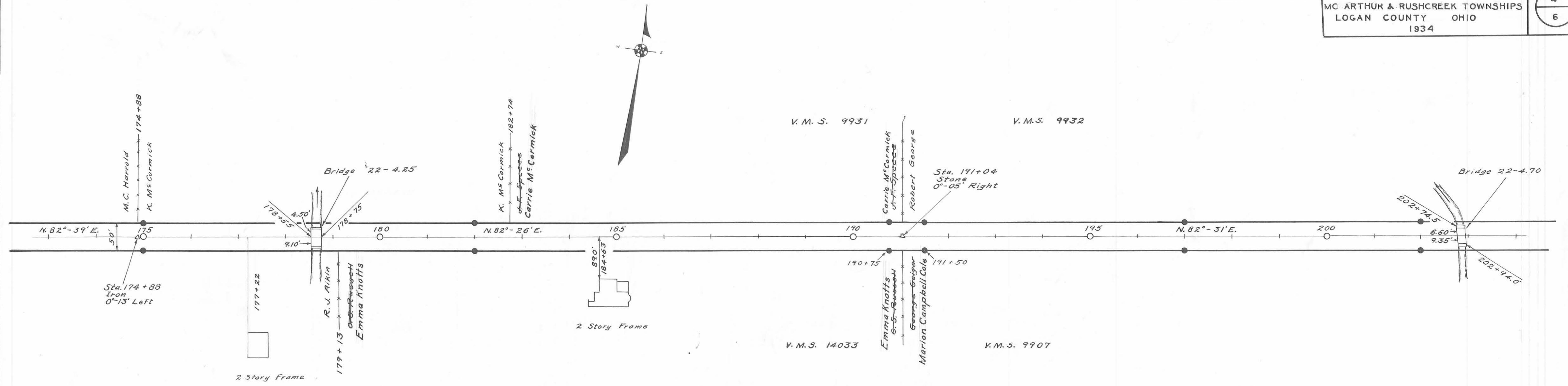


Concrete right-of-way posts set as shown ●
 Field Notes Book 559

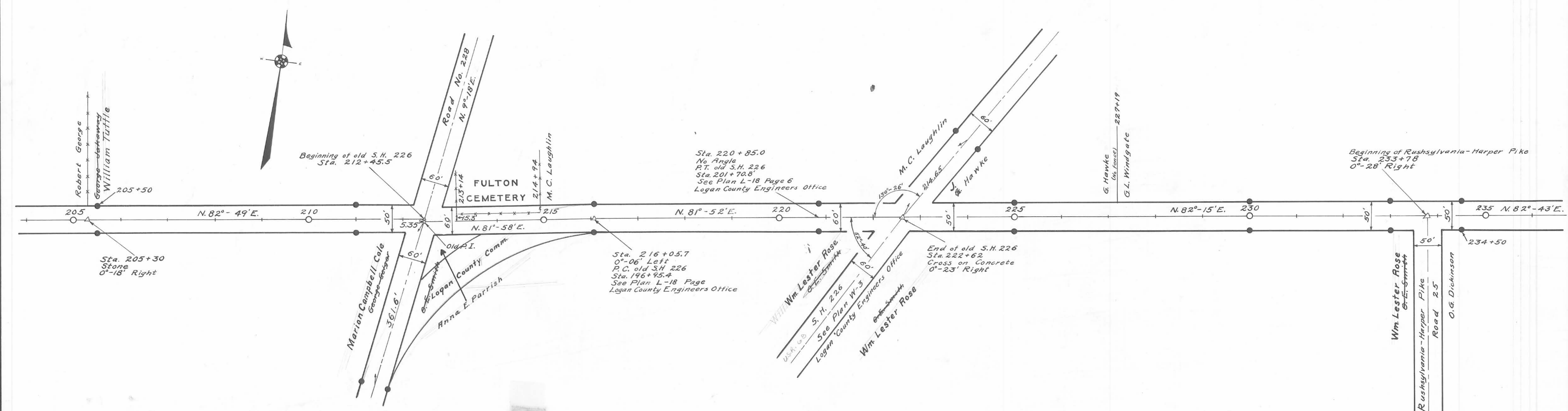


Surveyed By F.W. Wright
 1934
 Drawn By E.K. Core
 1936

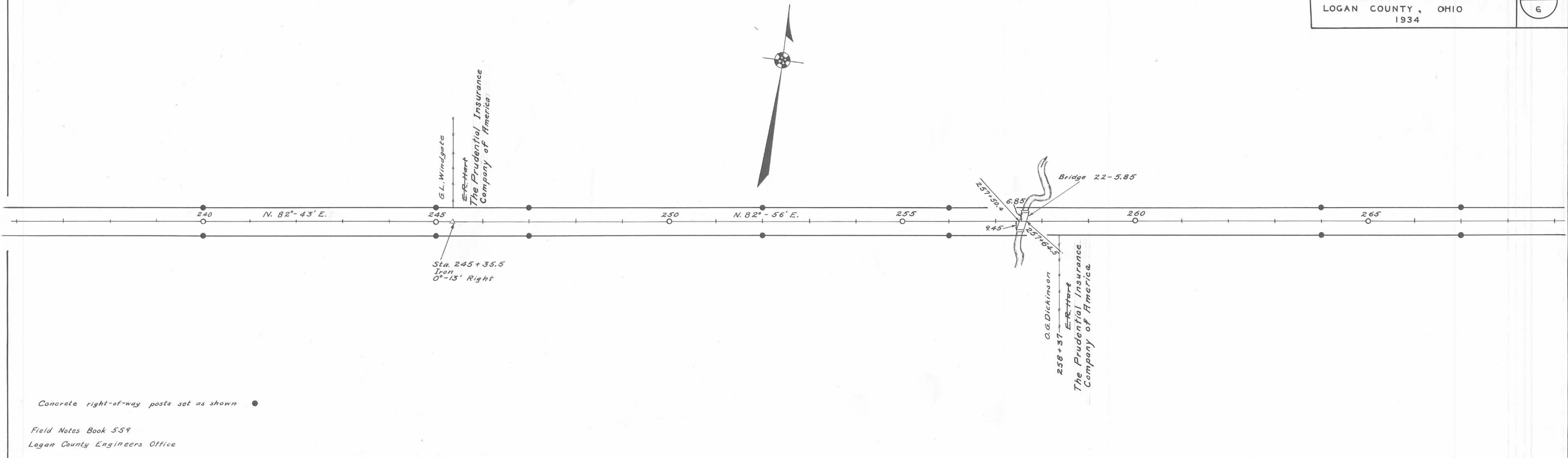
(1409)
 INDEXED ON MAP



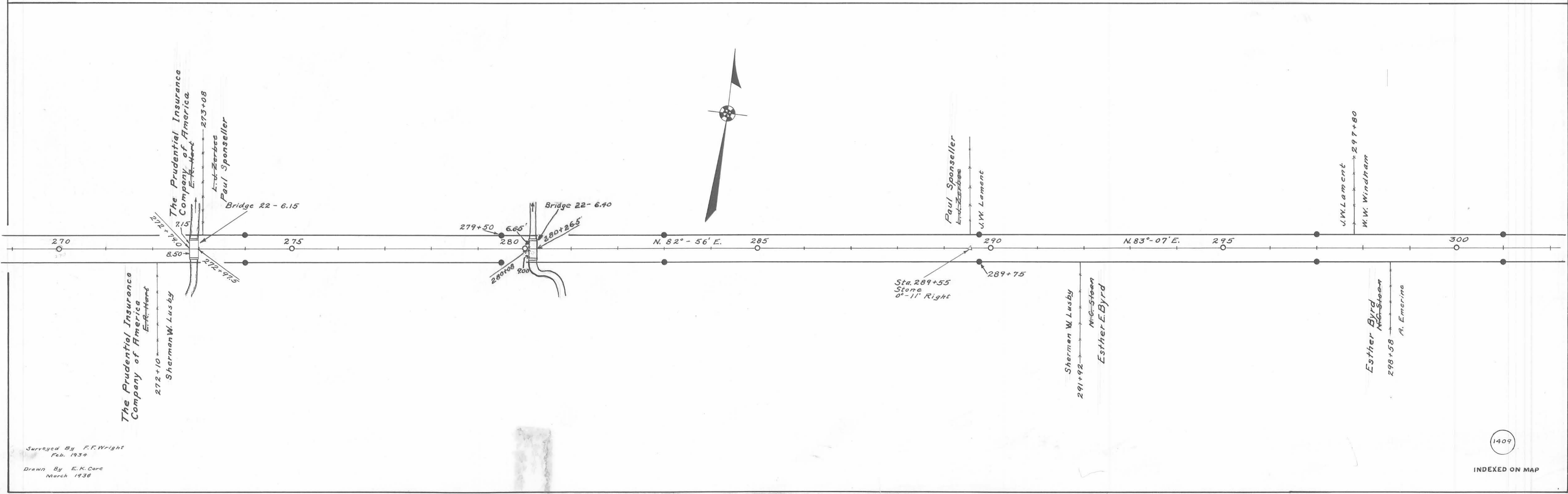
Concrete right-of-way posts set as shown ●
 Field Notes Book 559
 Logan County Engineers Office



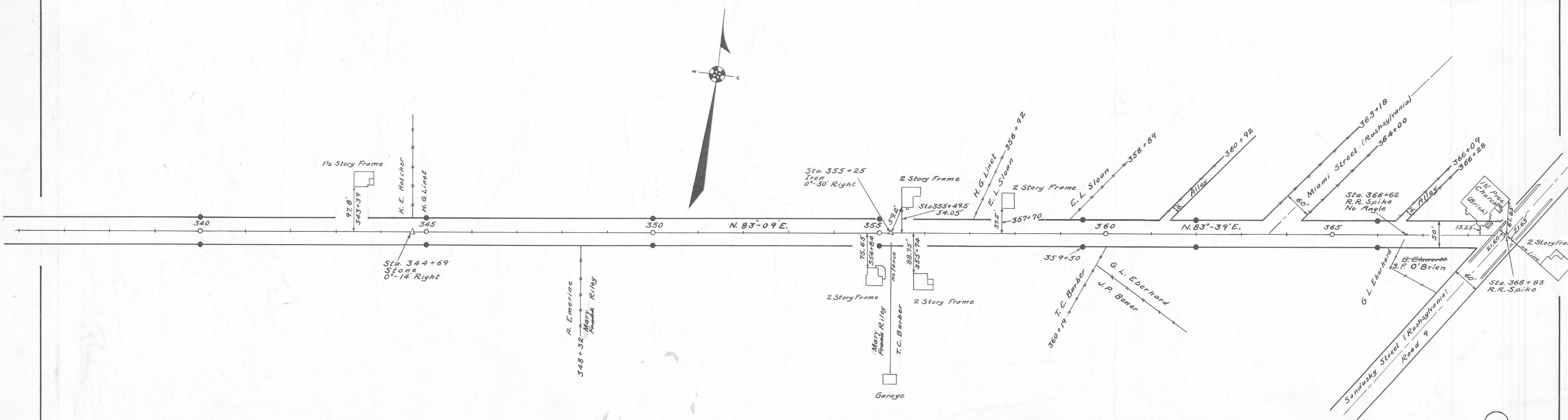
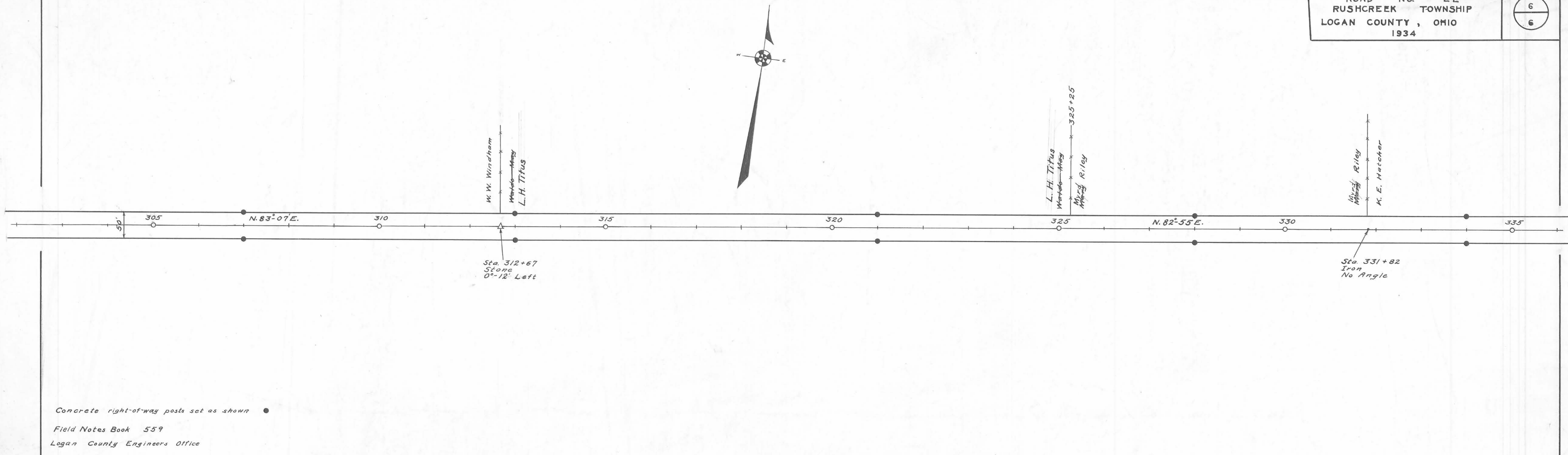
Surveyed By F.F. Wright
 Feb. 1934
 Drawn By E.K. Cole
 March 1936



Concrete right-of-way posts set as shown ●
 Field Notes Book 559
 Logan County Engineers Office



Surveyed By F.F. Wright
 Feb. 1934
 Drawn By E.K. Core
 March 1936



Surveyed By F.F. Wright
 February - 1934
 Drawn By E.K. Core
 March - 1936

1409

INDEXED ON MAP

LOCATION PLAN

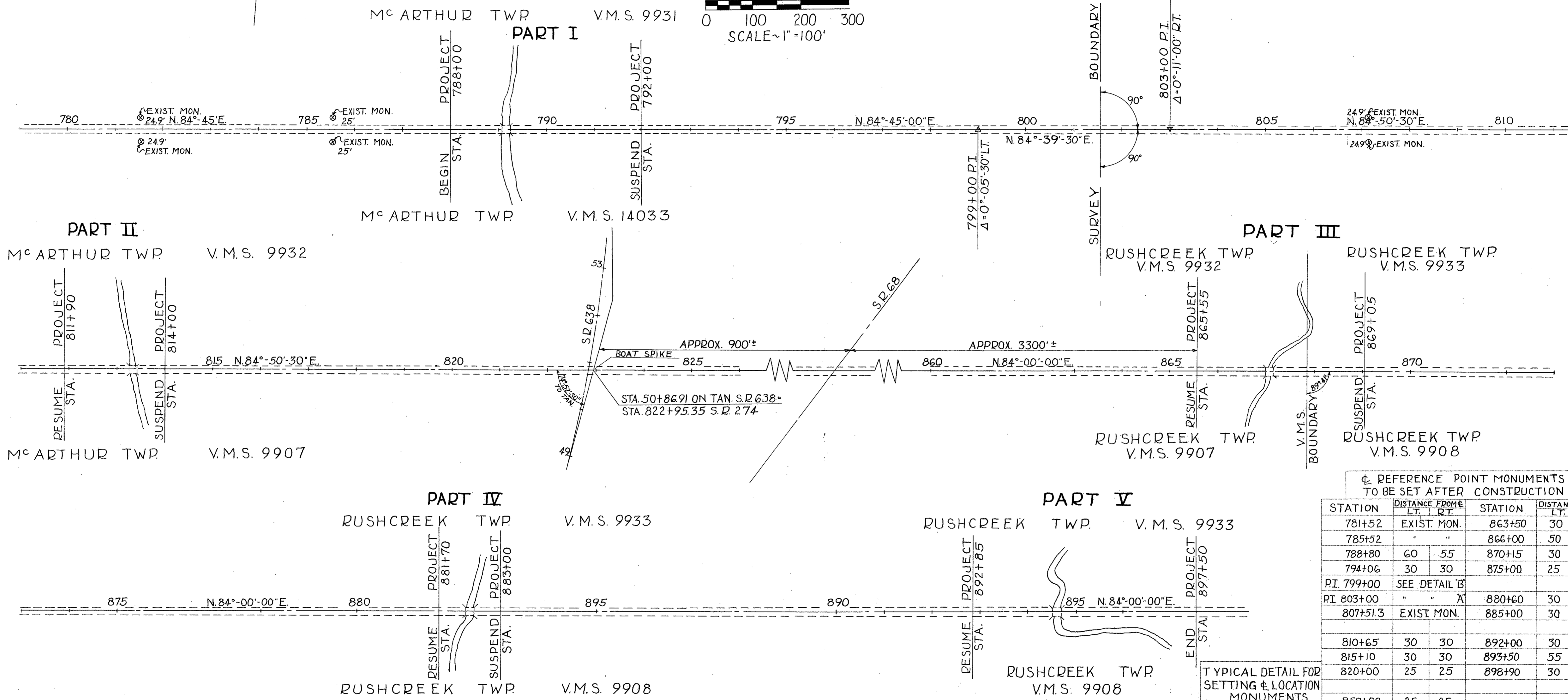
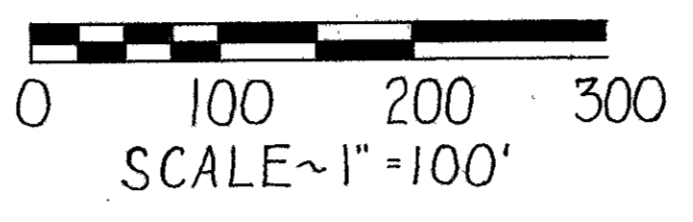
STATE ROUTE 274

LOGAN COUNTY

M^cARTHUR & RUSHCREEK TWP.

FED. RD. DIVISION	STATE	PROJECT	1 1
2	OHIO	1958	

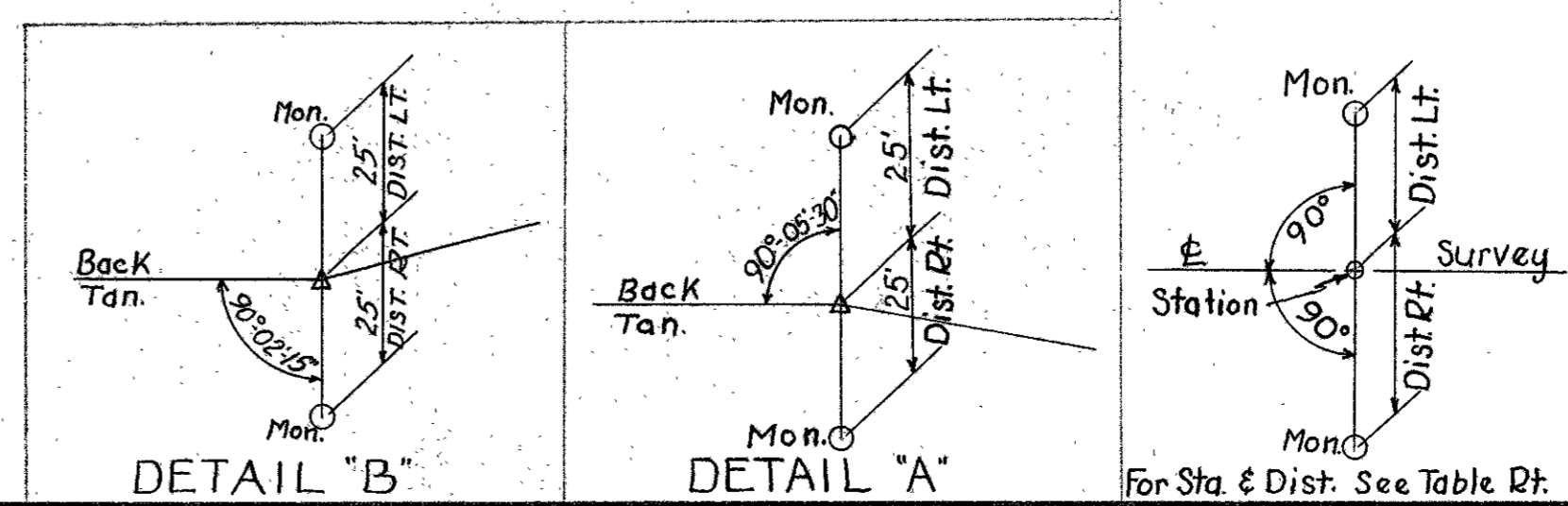
LOGAN COUNTY
LOG. 274-(14.92-16.9) Structures



⊕ REFERENCE POINT MONUMENTS TO BE SET AFTER CONSTRUCTION

STATION	DISTANCE FROM		STATION	DISTANCE FROM	
	LT.	RT.		LT.	RT.
781+52	EXIST. MON.		863+50	30	30
785+52	"	"	866+00	50	50
788+80	60	55	870+15	30	30
794+06	30	30	875+00	25	25
P.I. 799+00	SEE DETAIL 'B'				
P.I. 803+00	"	"	880+60	30	30
807+51.3	EXIST. MON.		885+00	30	30
810+65	30	30	892+00	30	30
815+10	30	30	893+50	55	45
820+00	25	25	898+90	30	30
858+00	25	25			

TYPICAL DETAIL FOR SETTING & LOCATION MONUMENTS



COMPLETED SETTING OF MONUMENTS BY: W. DOWNEY

RECORDED DATE: 5-6 1958
VOL. 1
PAGE 15

APPROVED: *For. M. Bowen*
DATE: 29 April 1958
RIGHT-OF-WAY ENGINEER - DIV. N^o 7
REGISTERED SURVEYOR N^o 3128