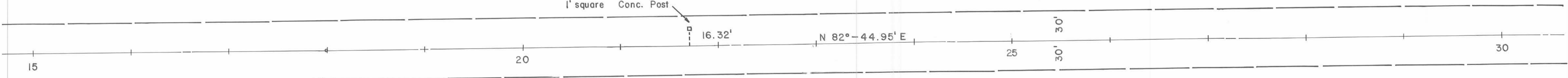


40-066-00-00-022

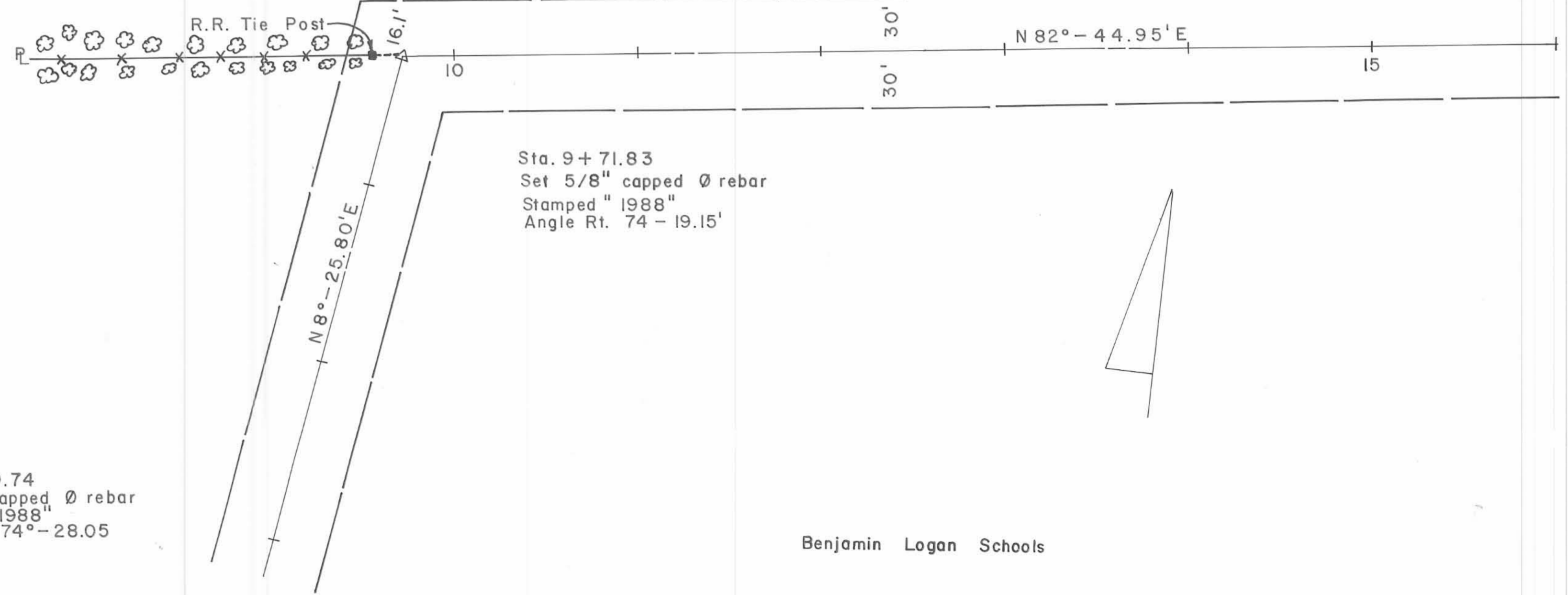
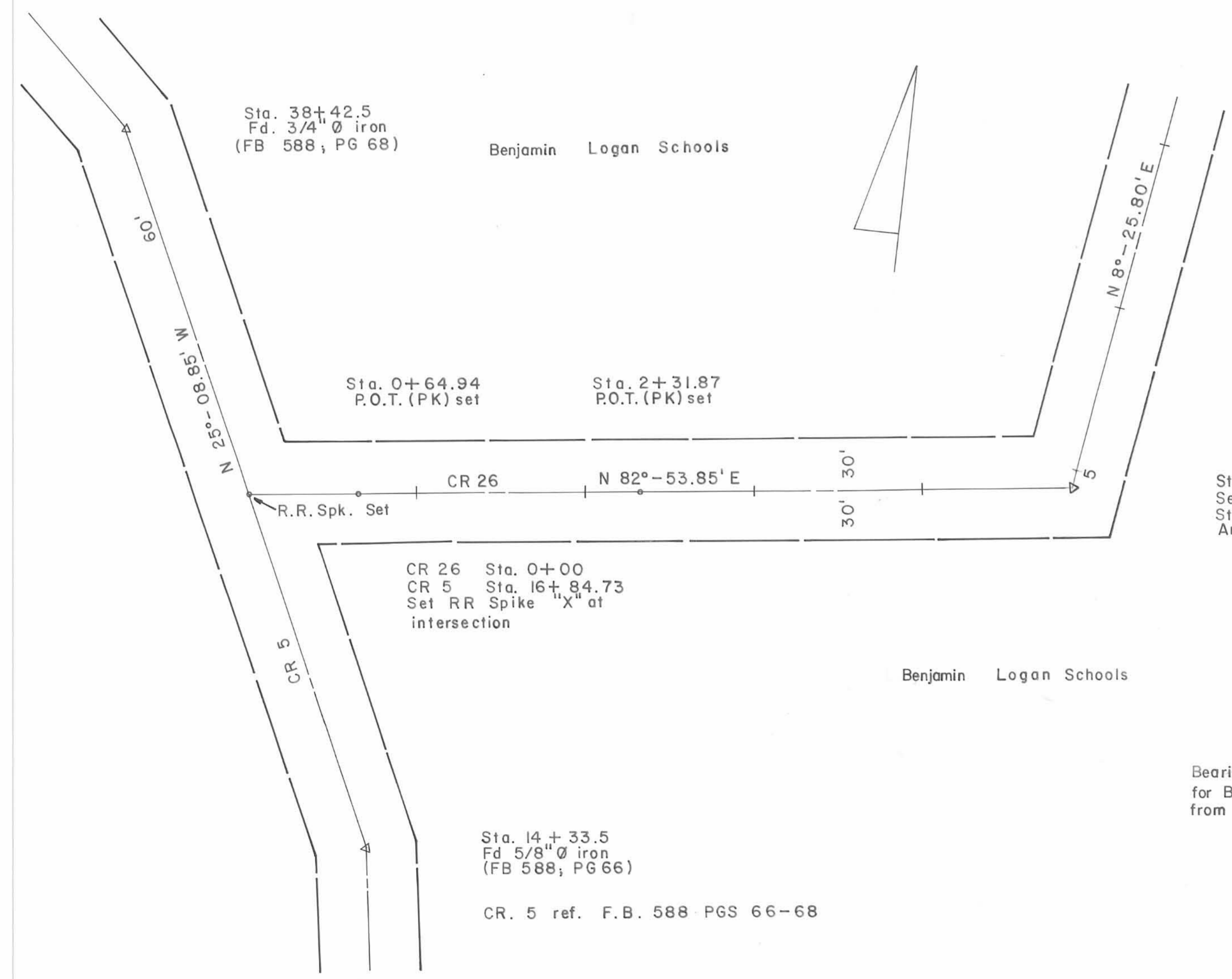
1' square Conc. Post



Sta. 17+98.80
P.O.T.(PK) Set

Sta. 21+69.32
P.O.T. (PK) Set

40-066-00-00-022
Harold A. Longbrake
188.46 AC



Benjamin Logan Schools



Bearings based from L.H. Geeslin Survey
for Benjamin Logan School Board tangent
from Sta. 9+71.83 to Sta. 91+22.48

Survey Rd. 26
Feb. 1988

Scale : 1" = 50'

