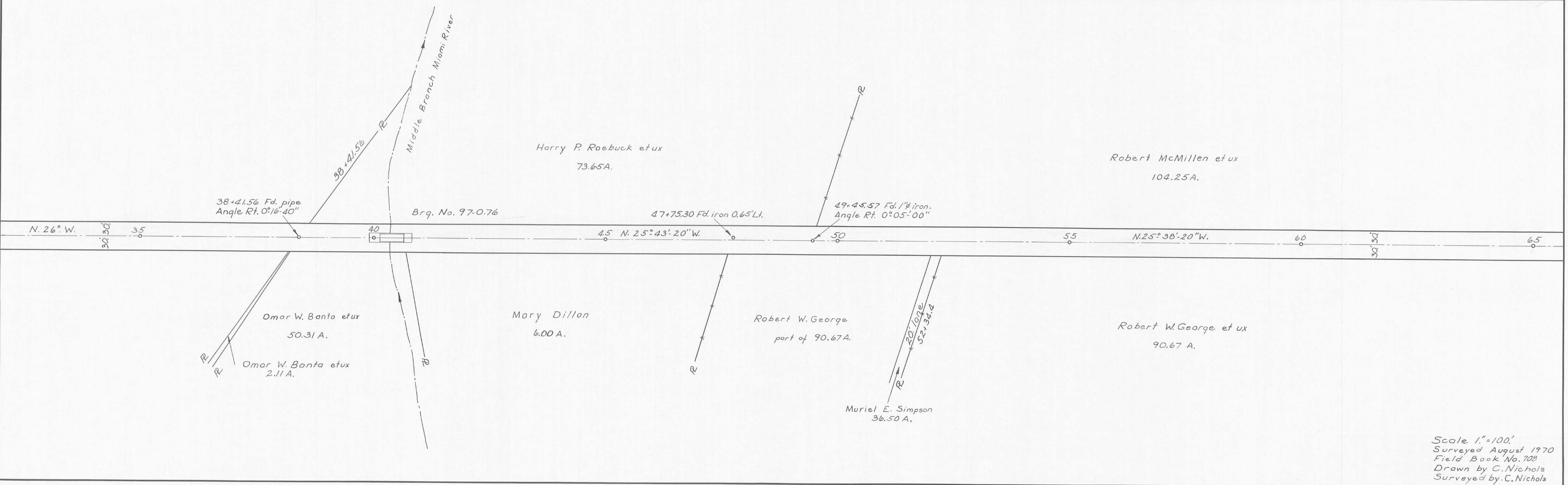
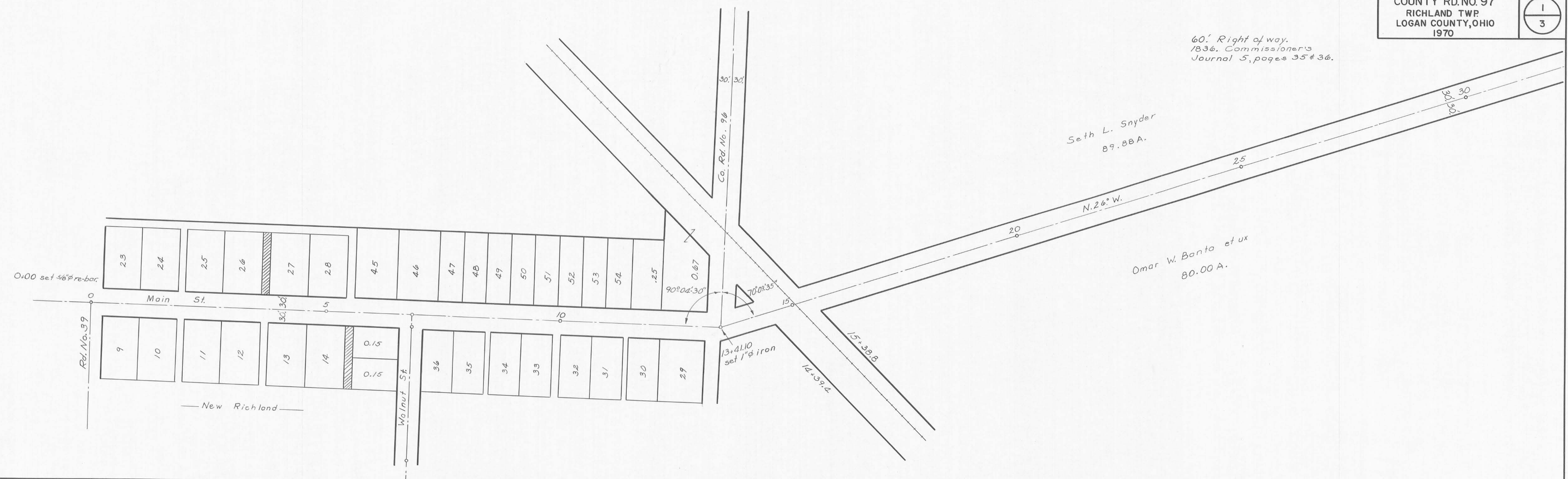


60' Right of way.
 1836. Commissioner's
 Journal 5, pages 35 & 36.

Seth L. Snyder
 89.88 A.

Omar W. Banta et ux
 80.00 A.

ROAD NO. 97



Scale 1"=100'
 Surveyed August 1970
 Field Book No. 708
 Drawn by C. Nichols
 Surveyed by C. Nichols

ROAD NO. 97



• State R/W monuments.

ROAD NO. 97

