

23-048-00-00-001-000
WISCHMEYER, W WILLIAM ETAL
96.094 acres
O.R. 221, page 641

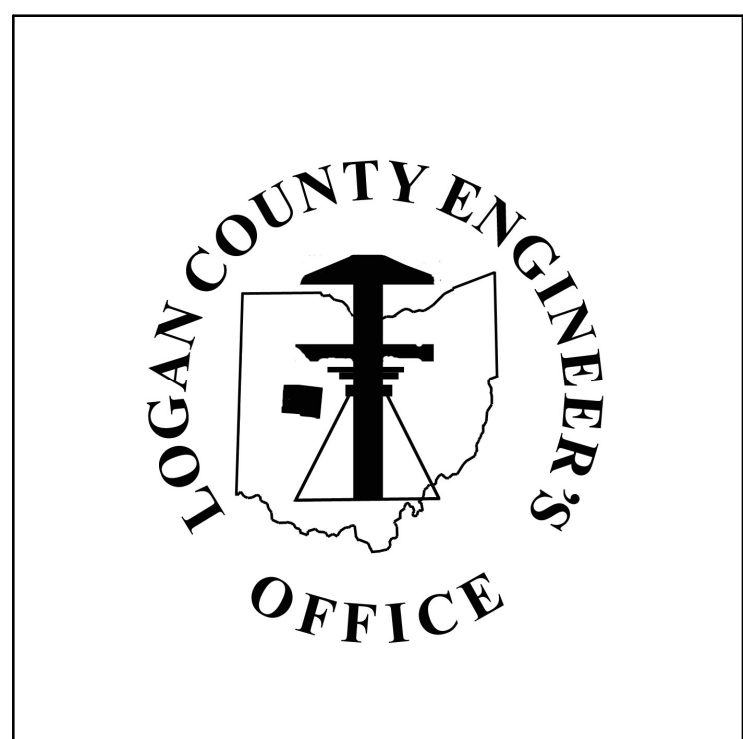
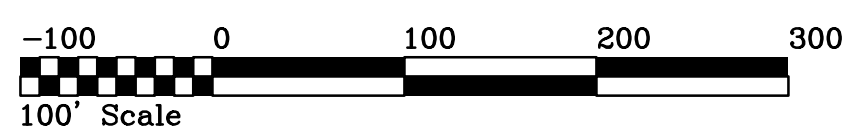
23-048-00-00-001-003
LINE, LARRY A & SHARON D TRUSTEES
1.022 acres
Parcel II
O.R. 967, page 83

23-047-00-00-009-000
HURLEY, DANIEL J & KRISTIN M
27.6 acres
Tract I
O.R. 1395, page 4871

23-048-00-00-003-000
MARK HOMAN LAND TRUST, LLC
61.188 acres
Tract I
O.R. 1061, page 356

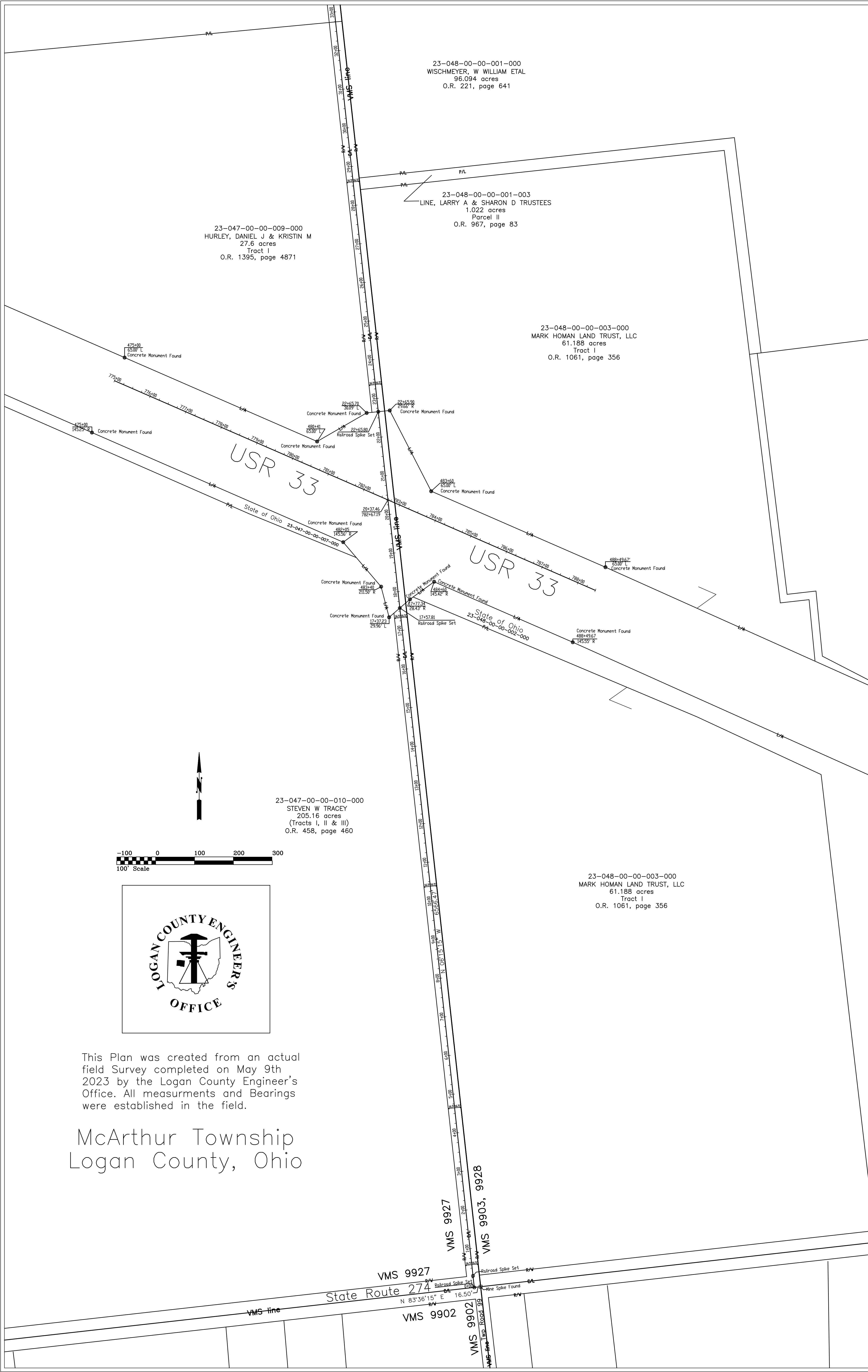
23-047-00-00-010-000
STEVEN W TRACEY
205.16 acres
(Tracts I, II & III)
O.R. 458, page 460

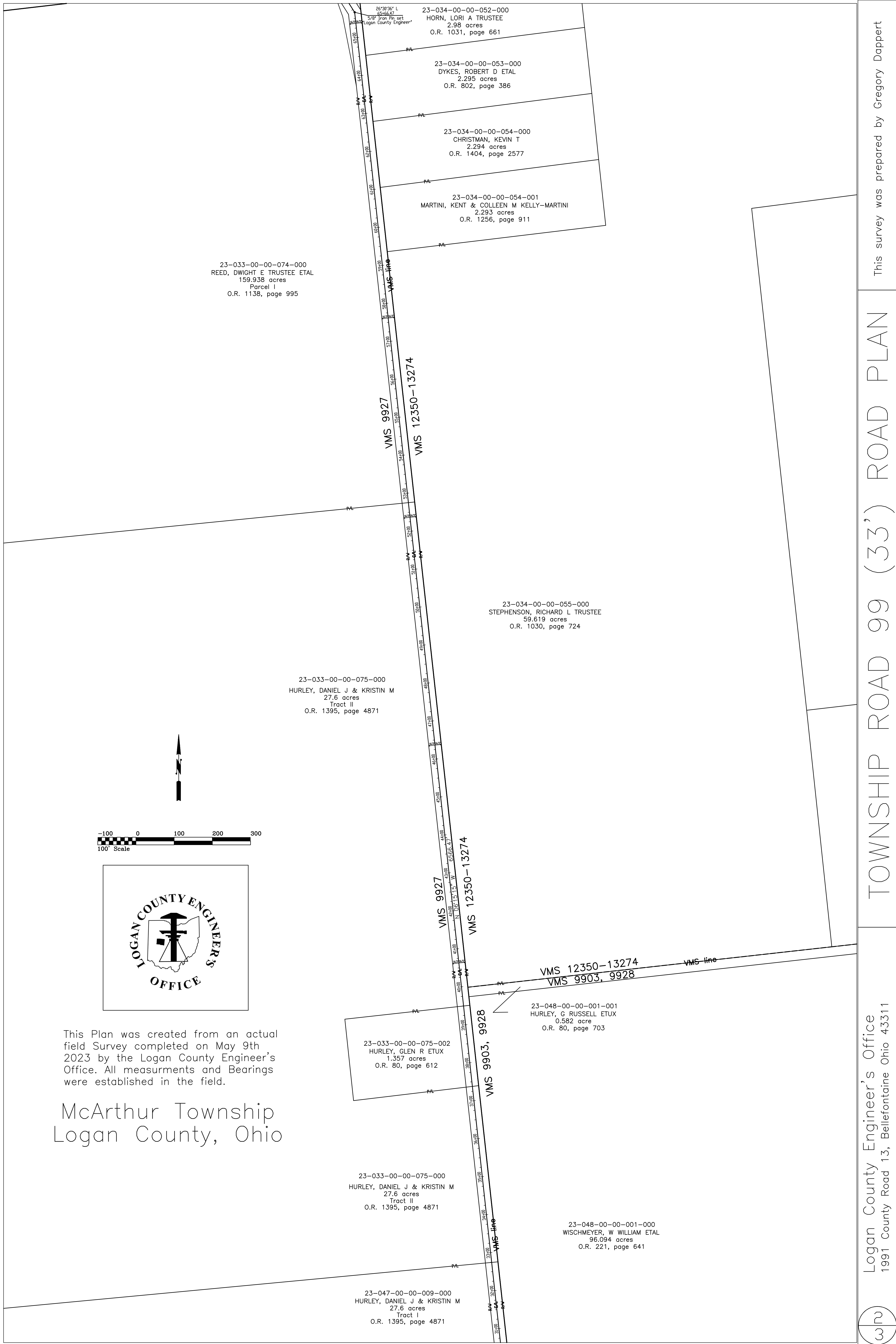
23-048-00-00-003-000
MARK HOMAN LAND TRUST, LLC
61.188 acres
Tract I
O.R. 1061, page 356



This Plan was created from an actual field Survey completed on May 9th, 2023 by the Logan County Engineer's Office. All measurements and Bearings were established in the field.

McArthur Township
Logan County, Ohio





23-033-00-00-074-000
 REED, DWIGHT E TRUSTEE ETAL
 159.938 acres
 Parcel I
 O.R. 1138, page 995

23-034-00-00-052-000
 HORN, LORI A TRUSTEE
 2.98 acres
 O.R. 1031, page 661

23-034-00-00-053-000
 DYKES, ROBERT D ETAL
 2.295 acres
 O.R. 802, page 386

23-034-00-00-054-000
 CHRISTMAN, KEVIN T
 2.294 acres
 O.R. 1404, page 2577

23-034-00-00-054-001
 MARTINI, KENT & COLLEEN M KELLY-MARTINI
 2.293 acres
 O.R. 1256, page 911

23-034-00-00-055-000
 STEPHENSON, RICHARD L TRUSTEE
 59.619 acres
 O.R. 1030, page 724

23-033-00-00-075-000
 HURLEY, DANIEL J & KRISTIN M
 27.6 acres
 Tract II
 O.R. 1395, page 4871

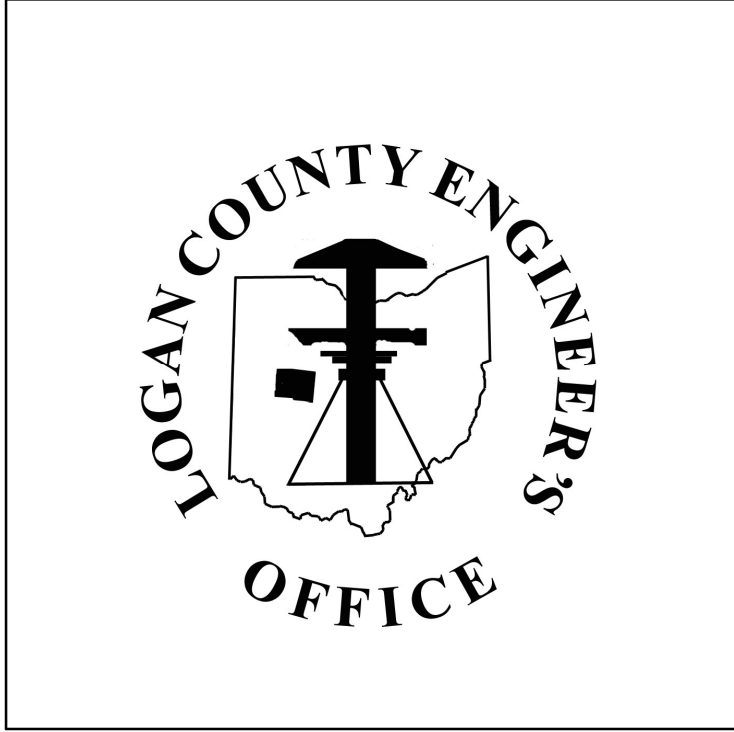
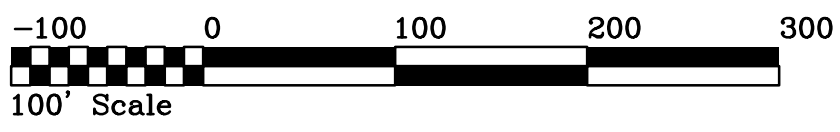
23-033-00-00-075-002
 HURLEY, GLEN R ETUX
 1.357 acres
 O.R. 80, page 612

23-048-00-00-001-001
 HURLEY, G RUSSELL ETUX
 0.582 acre
 O.R. 80, page 703

23-033-00-00-075-000
 HURLEY, DANIEL J & KRISTIN M
 27.6 acres
 Tract II
 O.R. 1395, page 4871

23-048-00-00-001-000
 WISCHMEYER, W WILLIAM ETAL
 96.094 acres
 O.R. 221, page 641

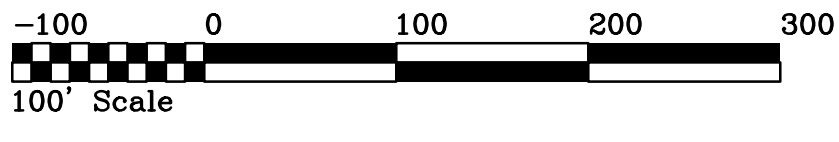
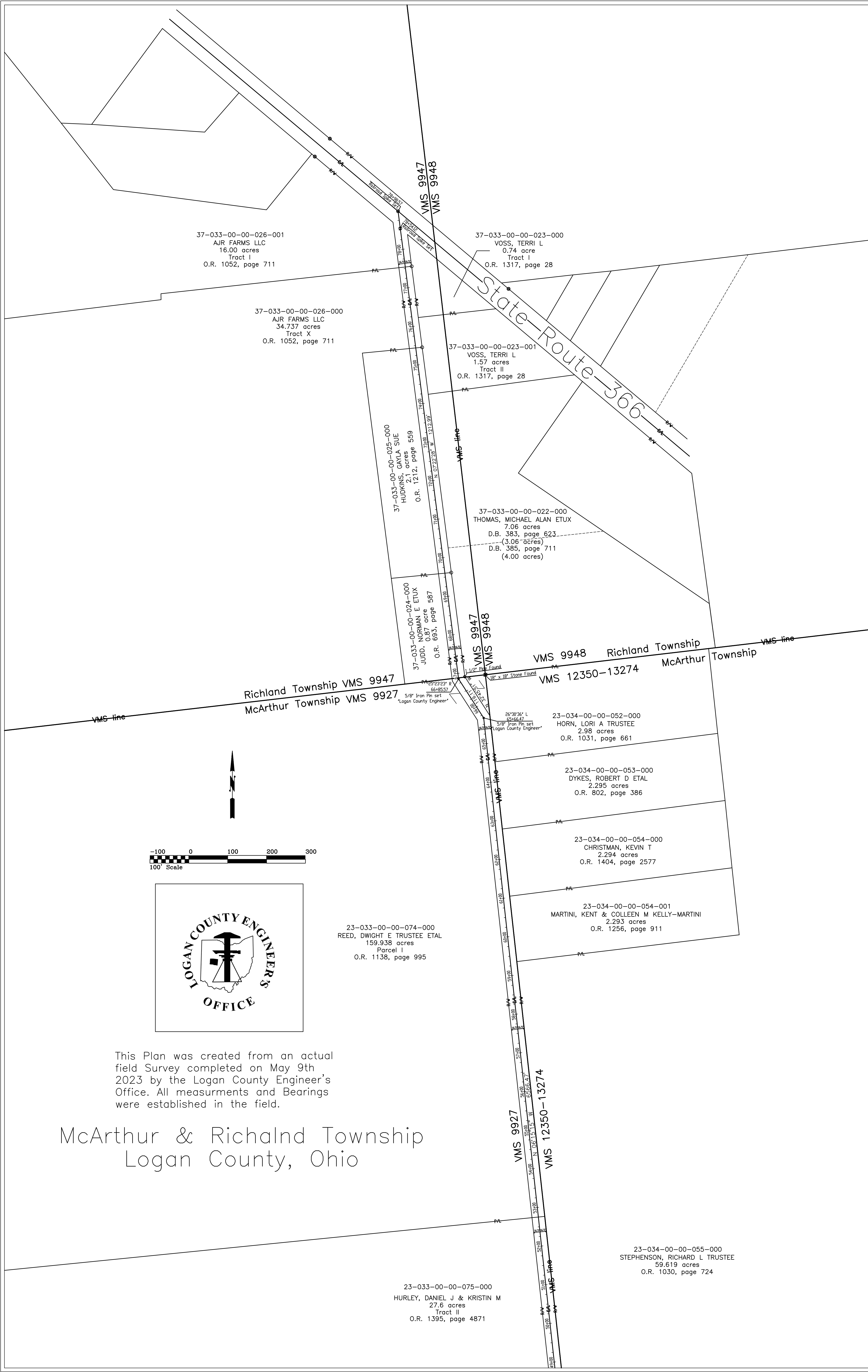
23-047-00-00-009-000
 HURLEY, DANIEL J & KRISTIN M
 27.6 acres
 Tract I
 O.R. 1395, page 4871



This Plan was created from an actual field Survey completed on May 9th 2023 by the Logan County Engineer's Office. All measurements and Bearings were established in the field.

McArthur Township
 Logan County, Ohio





This Plan was created from an actual field Survey completed on May 9th, 2023 by the Logan County Engineer's Office. All measurements and Bearings were established in the field.

McArthur & Richland Township Logan County, Ohio

This survey was prepared by Gregory Dappert

TOWNSHIP ROAD 99 (33') ROAD PLAN

Logan County Engineer's Office
1991 County Road 13, Bellefontaine Ohio 43311

