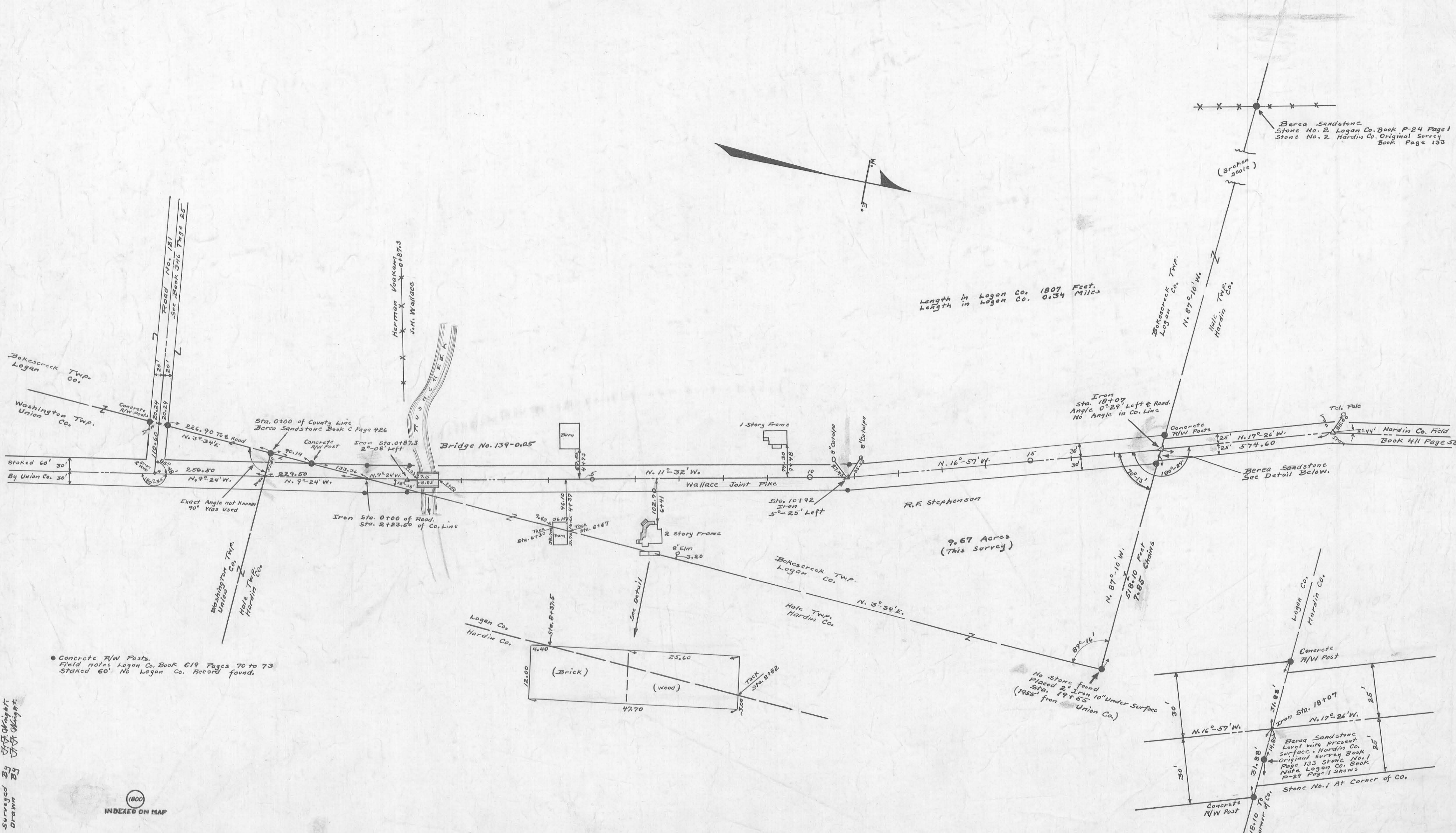


ROAD 139

X-139



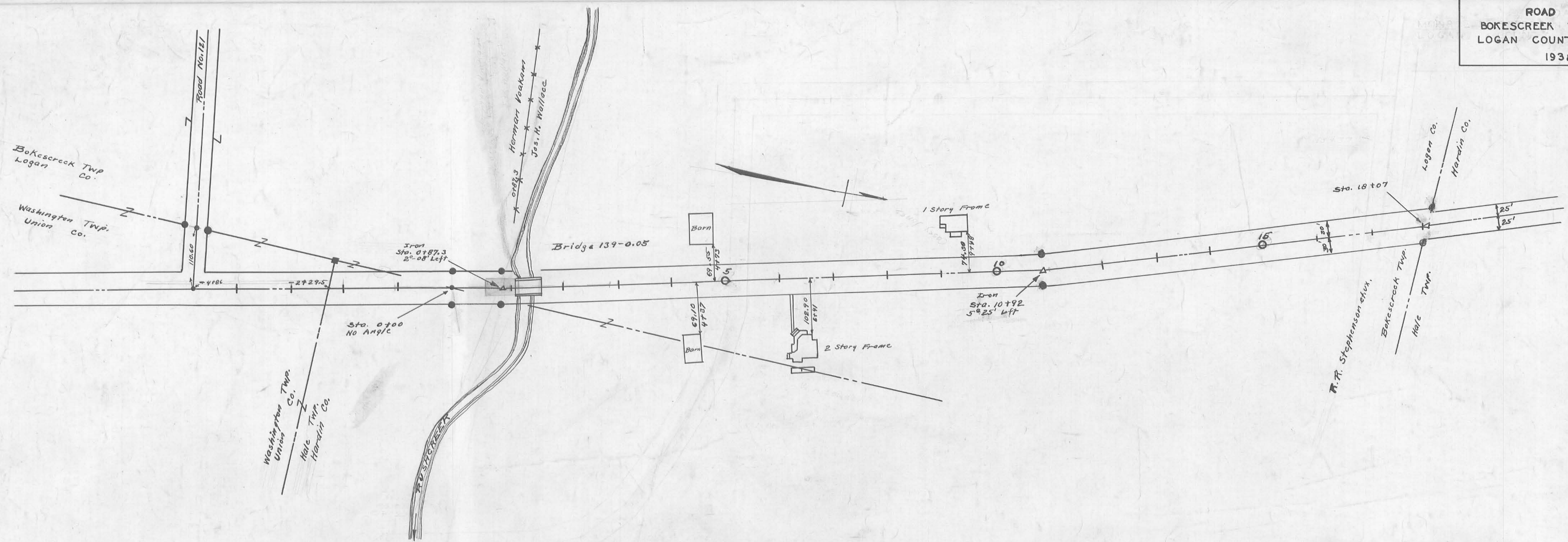
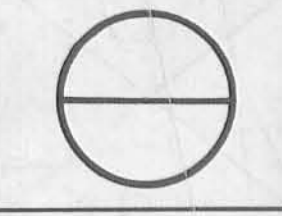
Length in Logan Co. 1807 Feet.
 Length in Logan Co. 0.34 Miles

Berea Sandstone
 Stone No. 2 Logan Co. Book P-24 Page 1
 Stone No. 2 Hardin Co. Original Survey
 Book Page 133

Concrete R/W Posts.
 Field notes Logan Co. Book 619 Pages 70 to 73
 Staked 60' No Logan Co. Record found.

Surveyed By
 Drawn By

1800
 INDEXED ON MAP



B.M. Top of Concrete R/W Post 20' N. of E. of Road 121 110.6 West of East end of Road 121 Post marked Logan-Union Elev. 1046.24

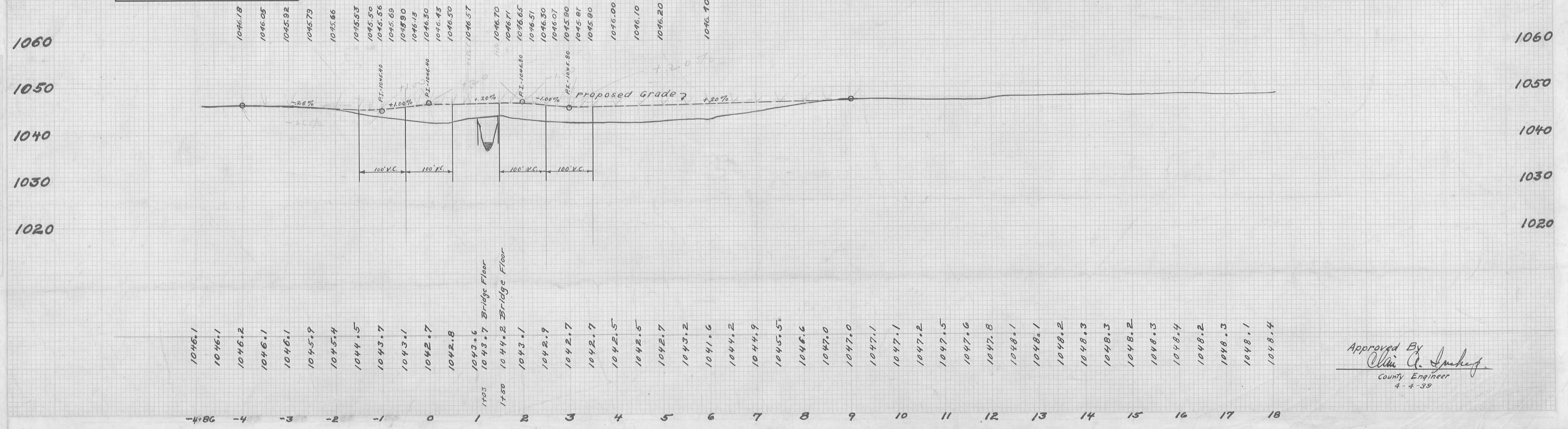
B.M. Top of Berea Sandstone Sandstone N.W. Corner of Union Co. Elev. 1042.25

B.M. Top Concrete R/W Post 30' E. of E. of 90° Sta. 0+00 Elev. 1042.25

B.M. Sidewalk (Level with yard) at first step 2 story frame House East side Sta. 6+15 Elev. 1046.19

B.M. Top Concrete R/W Post 30' West of E. Sta. 10+92 Elev. 1047.02

B.M. Top Concrete R/W Post Marked Logan-Hardin 31.88' East (30.00' at 90°) of Sta. 18+07 Elev. 1049.21

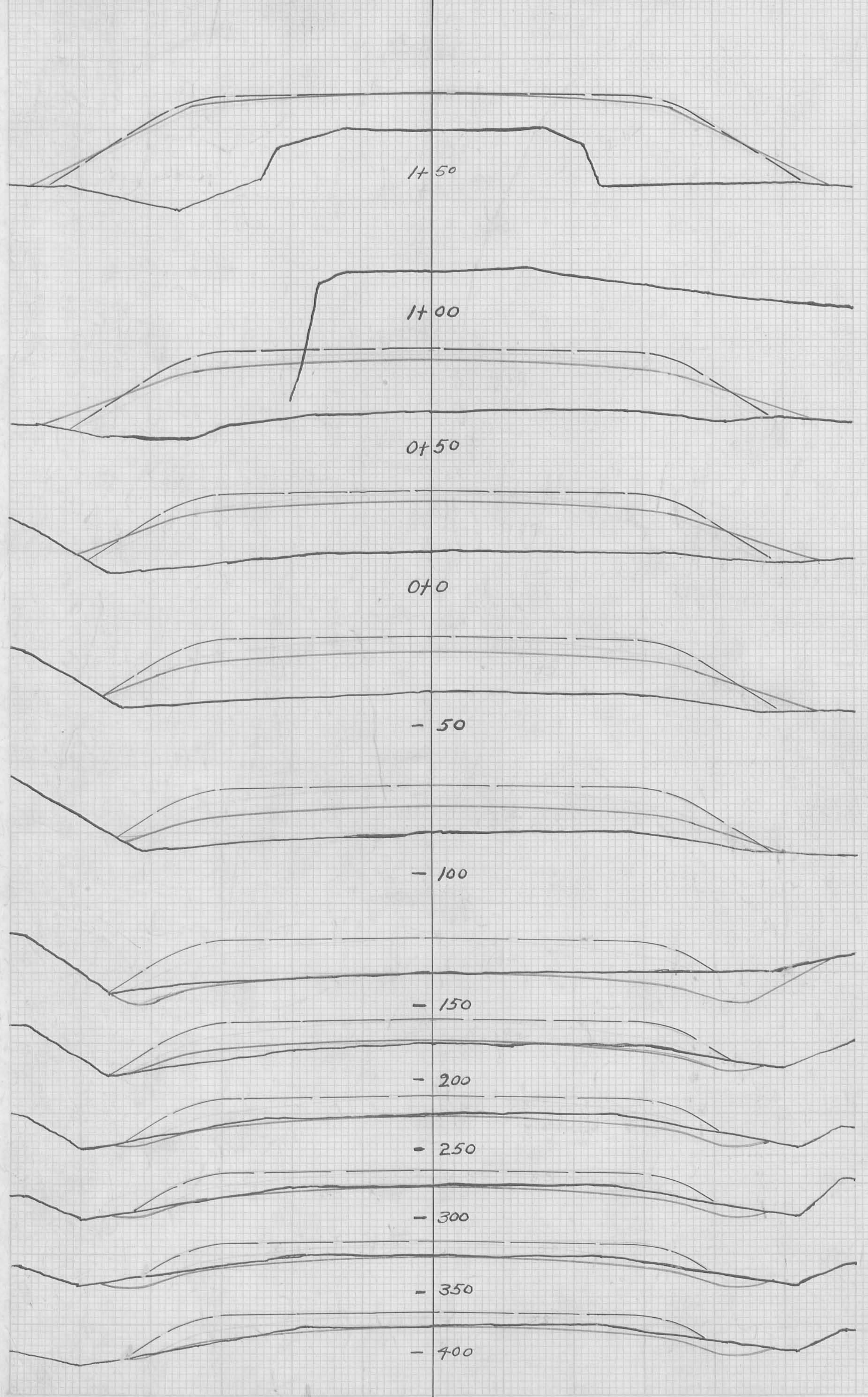


ROAD 139

X-38
 X-139

Approved By
Oliver A. Imhof
 County Engineer
 4-4-38

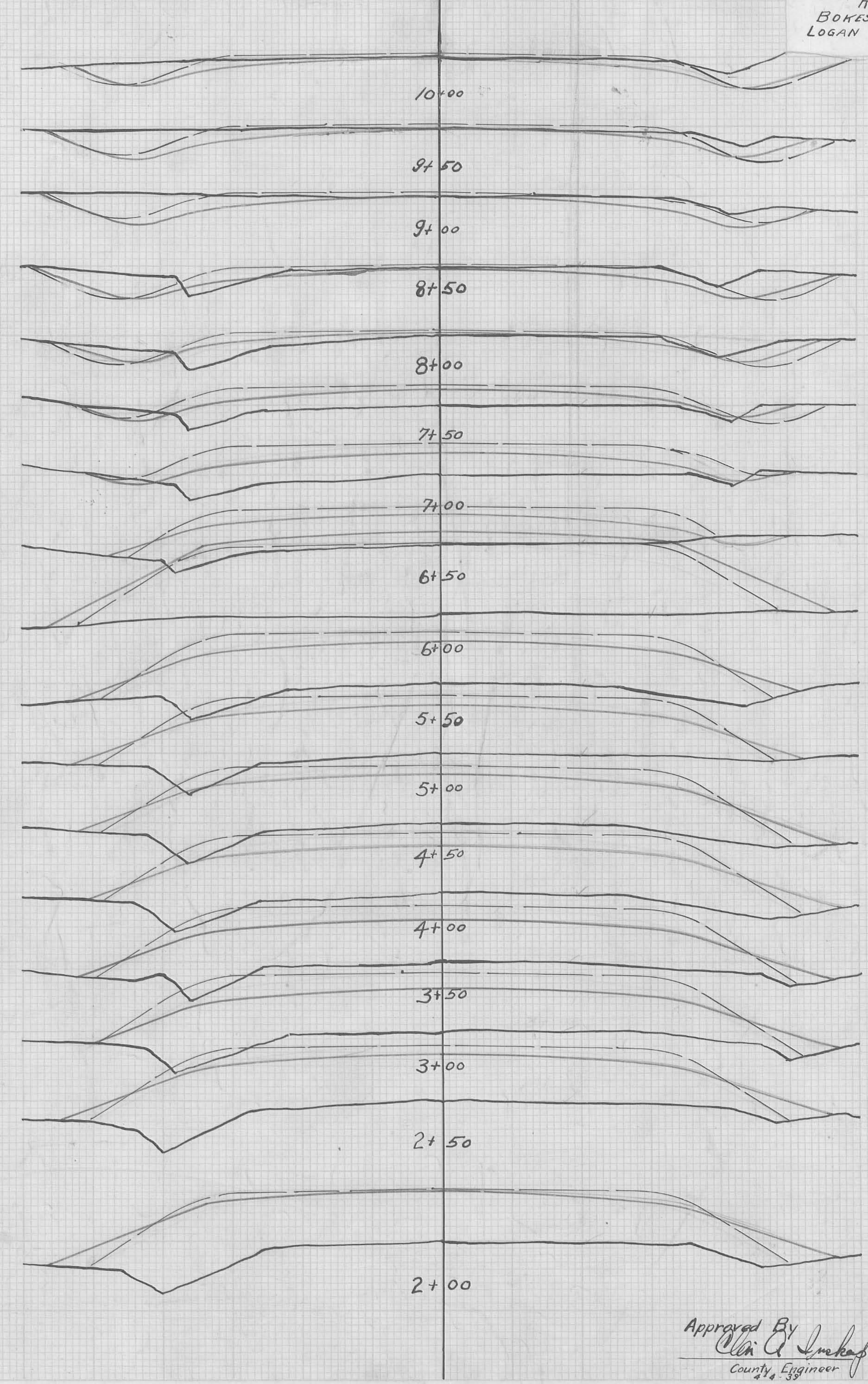
Left West 30 25 20 15 10 5 Right East 5 10 15 20 25 30



Sta	End Area		Cu Yds.	
	Cut	Fill	Cut	Fill
0+0	0	0	0	362
0+25	0	212	0	203
0+50	0	0	0	784
0+75	0	0	0	168
0+100	0	210	0	113
0+125	0	168	0	0
0+150	0	0	0	735
0+175	0	0	0	297
0+200	0	187	0	153
0+225	0	0	0	661
0+250	0	0	0	245
0+275	0	170	0	122
0+300	0	0	0	569
0+325	0	0	0	184
0+350	0	137	0	77
0+375	0	0	0	446
0+400	0	0	24	71
0+425	0	104	0	0
0+450	0	0	0	344
0+475	0	82	29	13
0+500	0	5	14	268
0+525	0	63	18	13
0+550	0	14	0	215
0+575	0	0	26	0
0+600	0	53	0	0
0+625	0	14	0	191
0+650	0	0	26	0
0+675	0	50	0	200
0+700	0	14	0	18
0+725	0	0	0	0
0+750	0	58	0	107
0+775	0	6	0	0

141 1298

Left West 30 25 20 15 10 5 Right East 5 10 15 20 25 30



Sta	End Area		Cu Yds.	
	Cut	Fill	Cut	Fill
10+00	0	0	0	0
9+50	18	0	33	0
9+00	32	0	60	0
8+50	0	0	56	0
8+00	12	0	67	0
7+50	40	0	56	0
7+00	10	10	68	3
6+50	34	3	56	65
6+00	12	25	42	15
5+50	11	13	33	165
5+00	6	64	17	47
4+50	4	40	0	294
4+00	0	95	6	79
3+50	2	60	0	380
3+00	0	110	4	134
2+50	2	85	0	612
2+00	0	224	2	316
1+50	0	0	0	744
1+00	0	178	0	370
0+50	0	143	0	693
0+00	0	196	0	278
-50	0	157	0	724
-100	0	195	0	302
-150	0	169	0	731
-200	0	0	0	314
-250	0	200	0	722
-300	0	0	0	296
-350	0	190	0	704
-400	0	145	0	268
-450	0	190	0	694
-500	0	147	0	287
-550	0	185	0	168
-600	0	0	0	694
-650	0	0	0	330
-700	0	190	0	188
-750	0	0	0	744

cut 245 263 Fill 12490 3062

Approved By
Oliver A. Suckey
 County Engineer

ROAD 139

F.F. Wright
G.W. Wilgus

X-139

X-139