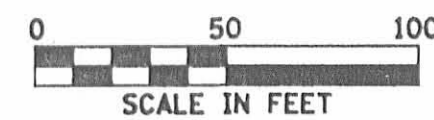
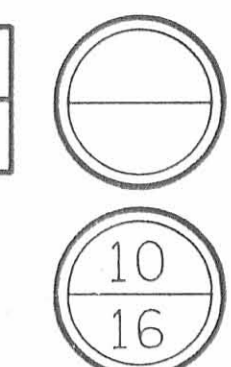


**UNION COUNTY  
LIBERTY TOWNSHIP  
V.M.S. 14755**



FHWA REGION	STATE	PROJECT
5	OHIO	



LOGAN COUNTY  
LOG-T.R.143-0.00

PROP. C.R.-253 CURVE DATA  
P.I. STA. 134+49.30  
 $\Delta = 25^{\circ}-00'-00''$  LT.  
D = 6"-00'  
R = 954.93'  
Lc = 166.67'  
Ls = 250.00'  
Ts = 337.24'  
Es = 25.98'

$\theta = 7^{\circ}-30'$   
Xc = 249.57'  
Yc = 10.90'  
L.T. = 166.82'  
S.T. = 83.47'  
p = 2.73'  
k = 124.93'

PROP. C.R.-253 CURVE DATA  
P.I. STA. 142+77.40  
 $\Delta = 25^{\circ}-09'-45''$  RT.  
D = 6"-00'  
R = 954.93'  
Lc = 169.38'  
Ls = 250.00'  
Ts = 338.66'  
Es = 26.29'

$\theta = 7^{\circ}-30'$   
Xc = 249.57'  
Yc = 10.90'  
L.T. = 166.82'  
S.T. = 83.47'  
p = 2.73'  
k = 124.93'

JOHN L. McBRIDE  
SANDRA K. McBRIDE

NET 0.085 AC.  
P.R.O. 0.082 AC.  
TOTAL 0.167 AC.

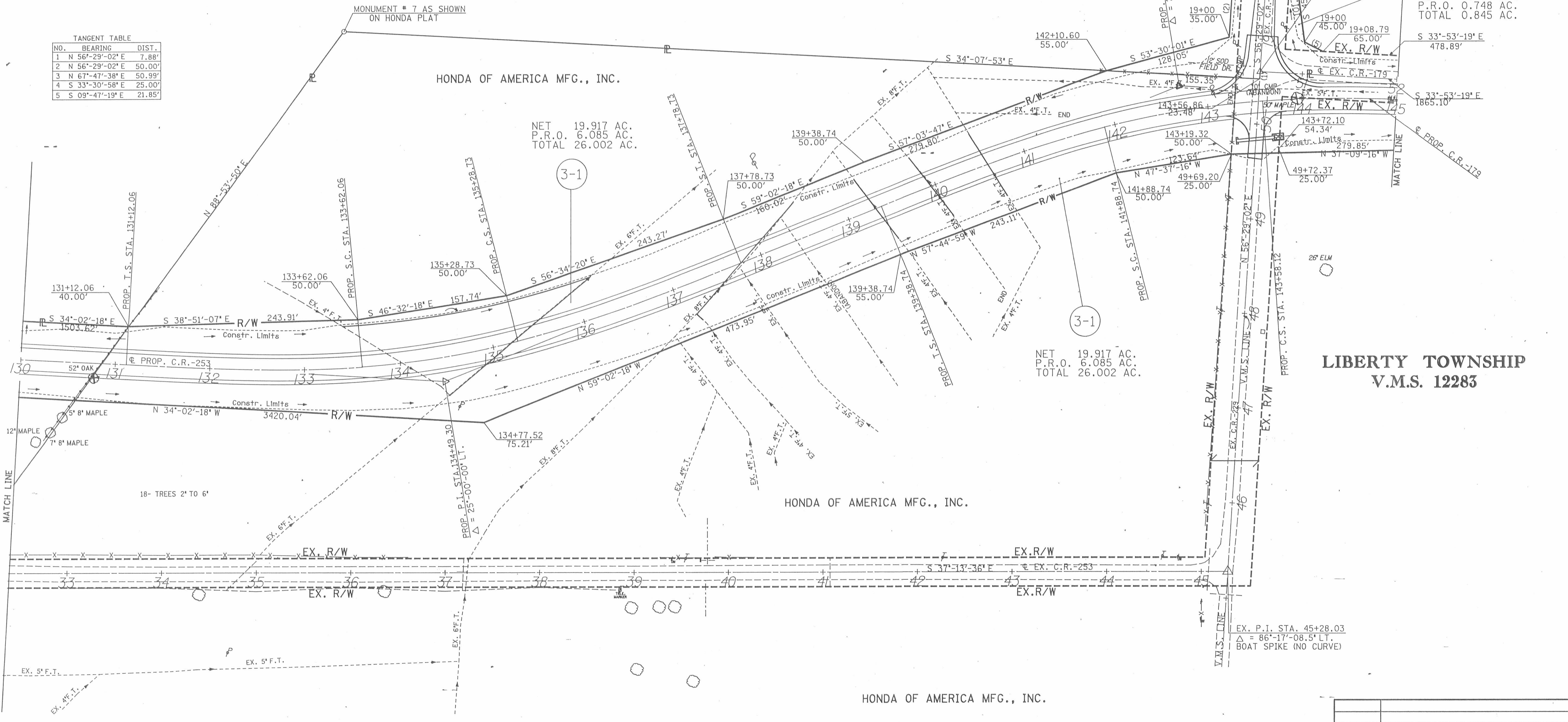
THE LINCOLN NATIONAL LIFE  
INSURANCE COMPANY

P.O.C. STA. 143+57.91 - 31.19' LT. =  
EX. P.I. STA. 50+55.36  
 $\Delta = 89^{\circ}-37'-39''$  RT.  
I.P. SET (NO CURVE)

NET 0.097 AC.  
P.R.O. 0.748 AC.  
TOTAL 0.845 AC.

TANGENT TABLE

NO.	BEARING	DIST.
1	N 56°-29'-02" E	7.88'
2	N 56°-29'-02" E	50.00'
3	N 67°-47'-38" E	50.99'
4	S 33°-30'-58" E	25.00'
5	S 09°-47'-19" E	21.85'



NET 19.917 AC.  
P.R.O. 6.085 AC.  
TOTAL 26.002 AC.

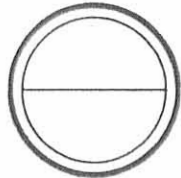
NET 19.917 AC.  
P.R.O. 6.085 AC.  
TOTAL 26.002 AC.

LIBERTY TOWNSHIP  
V.M.S. 12283

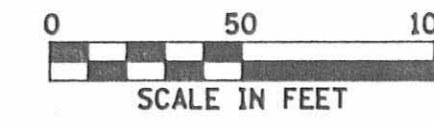
Date	Revision	Description
Completion Date : 12/09/88		

UNION COUNTY  
LIBERTY TOWNSHIP  
V.M.S. 12283

FHWA REGION	STATE	PROJECT
5	OHIO	



LOGAN COUNTY  
LOG-T.R.143-0.00

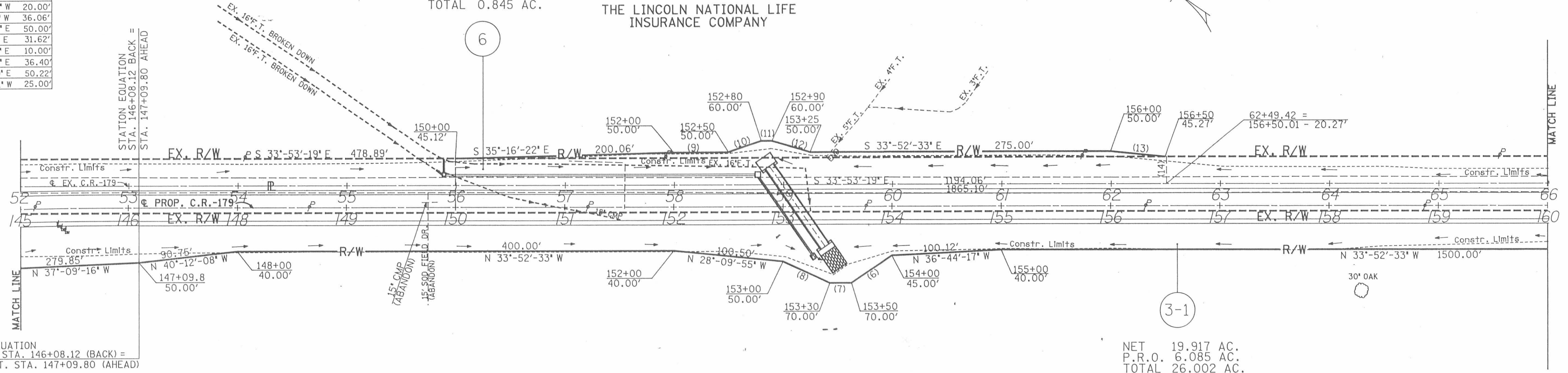


TANGENT TABLE

NO.	BEARING	DIST.
6	N 60°-26'-27" W	55.90'
7	N 33°-52'-33" W	20.00'
8	N 00°-11'-08" W	36.06'
9	S 33°-52'-33" E	50.00'
10	S 52°-18'-38" E	31.62'
11	S 33°-52'-33" E	10.00'
12	S 17°-55'-49" E	36.40'
13	S 28°-28'-10" E	50.22'
14	S 56°-06'-41" W	25.00'

NET 0.097 AC.  
P.R.O. 0.748 AC.  
TOTAL 0.845 AC.

THE LINCOLN NATIONAL LIFE  
INSURANCE COMPANY



STATION EQUATION  
PROP. S.T. STA. 146+08.12 (BACK) =  
PROP. P.O.T. STA. 147+09.80 (AHEAD)

NET 19.917 AC.  
P.R.O. 6.085 AC.  
TOTAL 26.002 AC.

HONDA OF AMERICA MFG., INC.

LIBERTY TOWNSHIP  
V.M.S. 12283

TANGENT TABLE

NO.	BEARING	DIST.
1	S 74°-33'-33" W	63.25'
2	N 33°-52'-33" W	35.00'
3	N 56°-07'-56" E	25.00'
4	S 65°-52'-52" E	47.17'
5	S 11°-15'-21" E	65.00'
6	S 25°-20'-42" E	67.41'
7	N 56°-07'-27" E	10.00'
8	N 11°-15'-21" W	28.60'
9	S 56°-07'-27" W	14.50'
10	S 33°-52'-33" E	98.40'

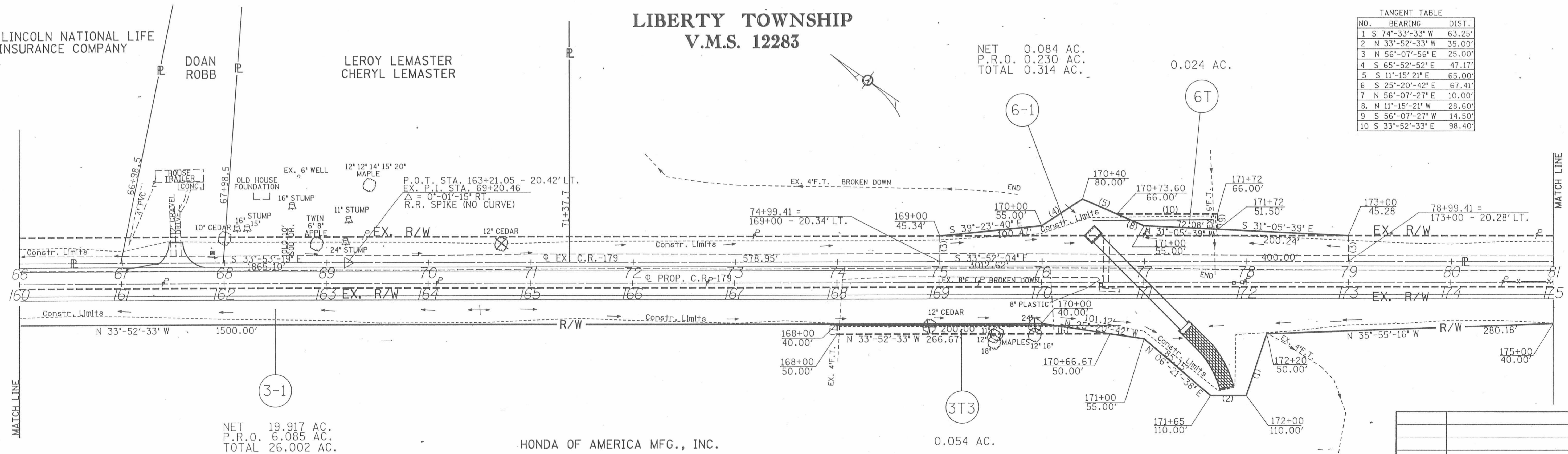
NET 0.084 AC.  
P.R.O. 0.230 AC.  
TOTAL 0.314 AC.

0.024 AC.

THE LINCOLN NATIONAL LIFE  
INSURANCE COMPANY

DOAN ROBB

LEROY LEMASTER  
CHERYL LEMASTER



NET 19.917 AC.  
P.R.O. 6.085 AC.  
TOTAL 26.002 AC.

HONDA OF AMERICA MFG., INC.

0.054 AC.

Date	Revision	Description
Completion Date : 12/09/88		

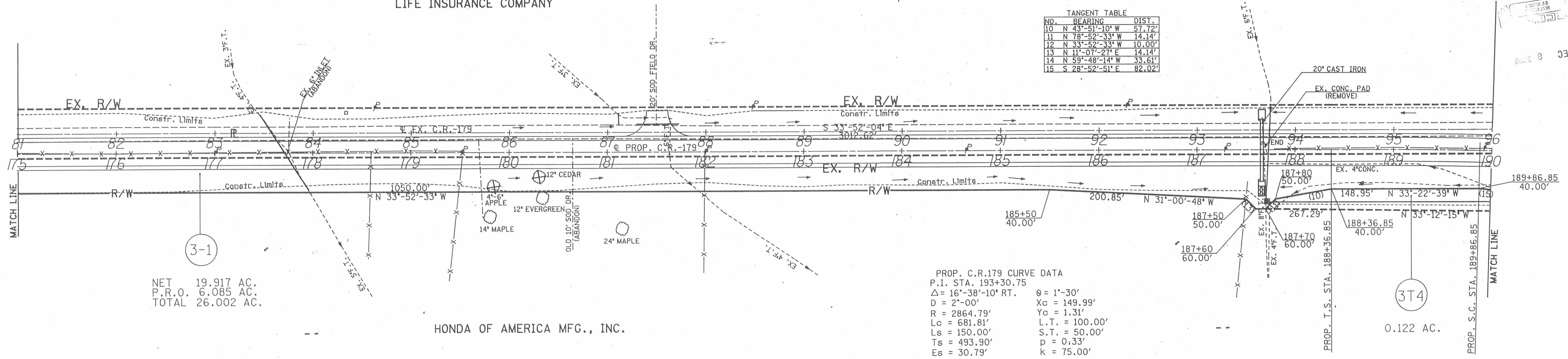
UNION COUNTY  
LIBERTY TOWNSHIP  
V.M.S. 12283

FHWA REGION	STATE	PROJECT
5	OHIO	

LOGAN COUNTY  
LOG-T.R.143-0.00



THE LINCOLN NATIONAL  
LIFE INSURANCE COMPANY



TANGENT TABLE

NO.	BEARING	DIST.
10	N 43°-51'-10" W	57.72'
11	N 78°-52'-33" W	14.14'
12	N 33°-52'-33" W	10.00'
13	N 11°-07'-27" E	14.14'
14	N 59°-48'-14" W	33.61'
15	S 28°-52'-51" E	82.02'

NET 19.917 AC.  
P.R.O. 6.085 AC.  
TOTAL 26.002 AC.

PROP. C.R.179 CURVE DATA  
P.I. STA. 193+30.75  
 $\Delta = 16^\circ-38'-10"$  RT.  
D = 2°-00'  
R = 2864.79'  
Lc = 681.81'  
Ls = 150.00'  
Ts = 493.90'  
Es = 30.79'

$\theta = 1^\circ-30'$   
Xc = 149.99'  
Yc = 1.31'  
L.T. = 100.00'  
S.T. = 50.00'  
p = 0.33'  
k = 75.00'

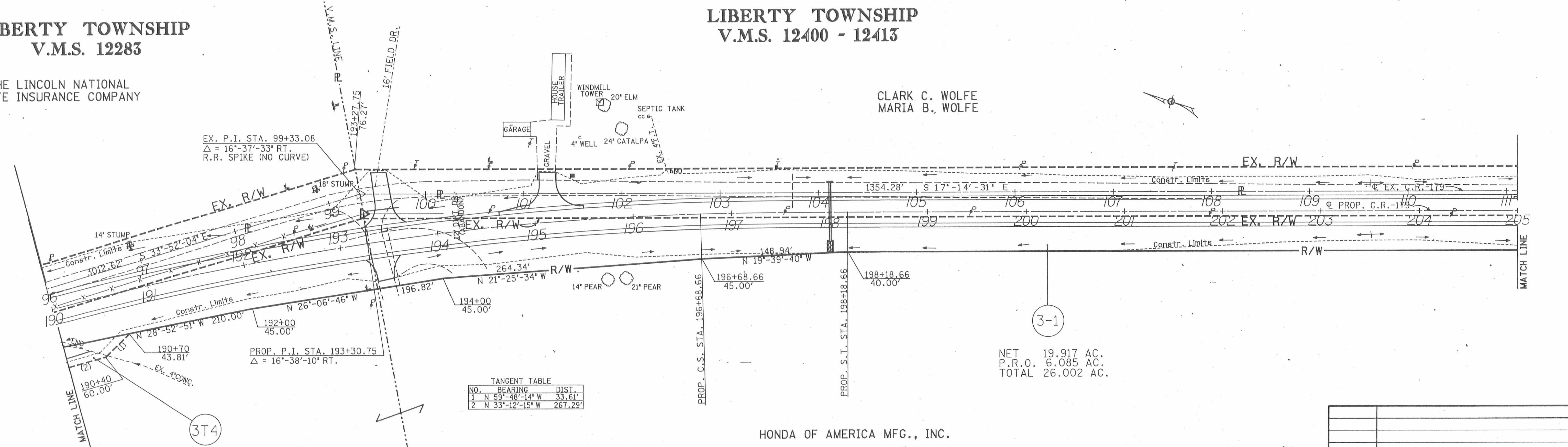
HONDA OF AMERICA MFG., INC.

LIBERTY TOWNSHIP  
V.M.S. 12283

THE LINCOLN NATIONAL  
LIFE INSURANCE COMPANY

LIBERTY TOWNSHIP  
V.M.S. 12400 - 12413

CLARK C. WOLFE  
MARIA B. WOLFE



EX. P.I. STA. 99+33.08  
 $\Delta = 16^\circ-37'-33"$  RT.  
R.R. SPIKE (NO CURVE)

PROP. P.I. STA. 193+30.75  
 $\Delta = 16^\circ-38'-10"$  RT.

TANGENT TABLE

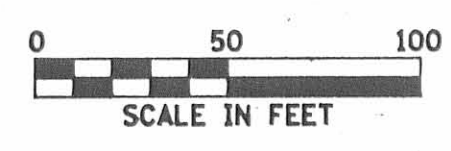
NO.	BEARING	DIST.
1	N 59°-48'-14" W	33.61'
2	N 33°-12'-15" W	267.29'

NET 19.917 AC.  
P.R.O. 6.085 AC.  
TOTAL 26.002 AC.

HONDA OF AMERICA MFG., INC.

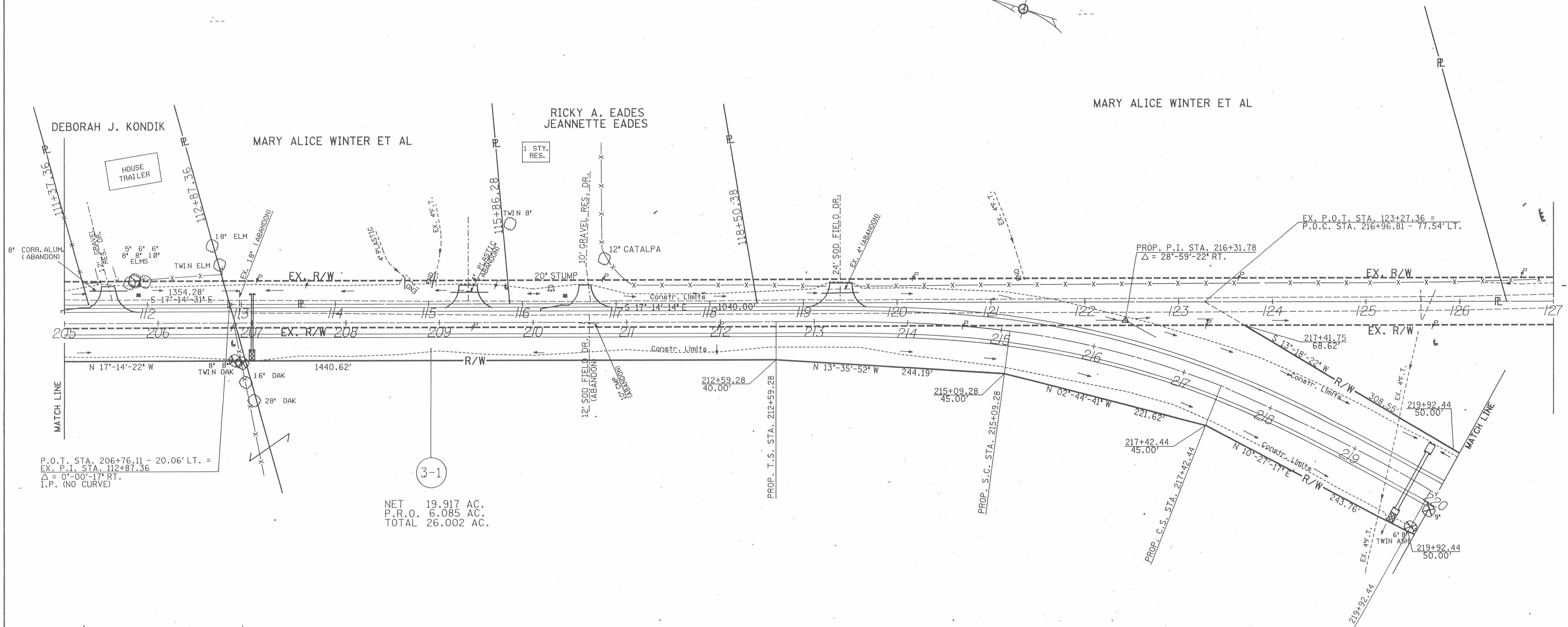
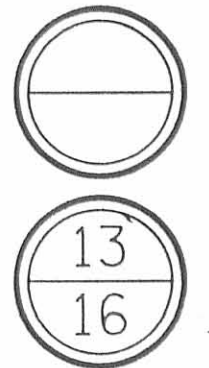
Date	Revision	Description
Completion Date	12/09/88	

UNION COUNTY  
LIBERTY TOWNSHIP  
V.M.S. 12400 - 12413



FHWA REGION	STATE	PROJECT
5	OHIO	

LOGAN COUNTY  
LOG-T.R.143-0.00



P.O.T. STA. 206+76.11 - 20.06' LT. =  
EX. P.I. STA. 112+87.36  
Δ = 0°-00'-17" RT.  
I.P. (NO CURVE)

3-1  
NET 19.917 AC.  
P.R.O. 6.085 AC.  
TOTAL 26.002 AC.

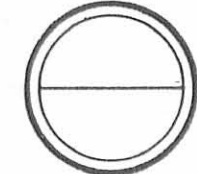
HONDA OF AMERICA MFG., INC.

PROP. C.R.179 CURVE DATA  
P.I. STA. 216+31.78  
Δ = 28°-59'-22" RT.  
D = 6'-00'      θ = 7°-30'  
R = 954.93'      Xc = 249.57'  
Lc = 233.16'      Yc = 10.90'  
Ls = 250.00'      L.T. = 166.82'  
Ts = 372.50'      S.T. = 83.47'  
Es = 34.21'      p = 2.73'  
k = 124.93'

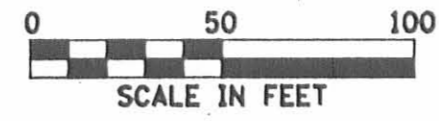
Date	Revision	Description
Completion Date : 12/09/88		

UNION COUNTY  
LIBERTY TOWNSHIP

FHWA REGION	STATE	PROJECT
5	OHIO	



LOGAN COUNTY  
LOG-T.R.143-0.00



220+22.78 - 246.07' LT. =  
EX. P.I. STA. 127+14.65  
Δ = 1°-17'-27" LT.  
I.P. (NO CURVE)

THE LINCOLN NATIONAL  
LIFE INSURANCE COMPANY

P.I. STA. 137+00.17  
Δ = 76°-52'-25" RT.  
I.P. (NO CURVE)

THE LINCOLN NATIONAL  
LIFE INSURANCE COMPANY

V.M.S. 12400 - 12413

HONDA OF AMERICA MFG., INC.

NET 19.917 AC.  
P.R.O. 6.085 AC.  
TOTAL 26.002 AC.

TANGENT TABLE

NO.	BEARING	DIST.
1	S 32°-15'-00" E	25.00'
2	S 58°-20'-44" W	25.00'
3	S 58°-20'-44" E	30.00'
4	S 12°-12'-11" W	42.84'
5	N 32°-15'-00" W	30.89'

V.M.S. 12400 - 12413

HONDA OF AMERICA MFG., INC.

PROP. C.R.179 CURVE DATA  
P.I. STA. 228+72.36  
Δ = 44°-00'-00" LT.  
D = 6°-00'  
R = 954.93'  
Lc = 483.33'  
Ls = 250.00'  
Ts = 511.85'  
Es = 77.94'

Q = 7°-30'  
Xc = 249.57'  
Yc = 10.90'  
L.T. = 166.82'  
S.T. = 83.47'  
p = 2.73'  
K = 124.93'

NET 19.917 AC.  
P.R.O. 6.085 AC.  
TOTAL 26.002 AC.

V.M.S. 12282

- TREE SYMBOLS
- B= BOX ELDER
  - E= ELM
  - O= OAK
  - H= HACKBERRY
  - WC= WILD CHERRY
  - A= ASH
  - M= MAPLE

Date	Revision	Description
Completion Date : 12/09/88		