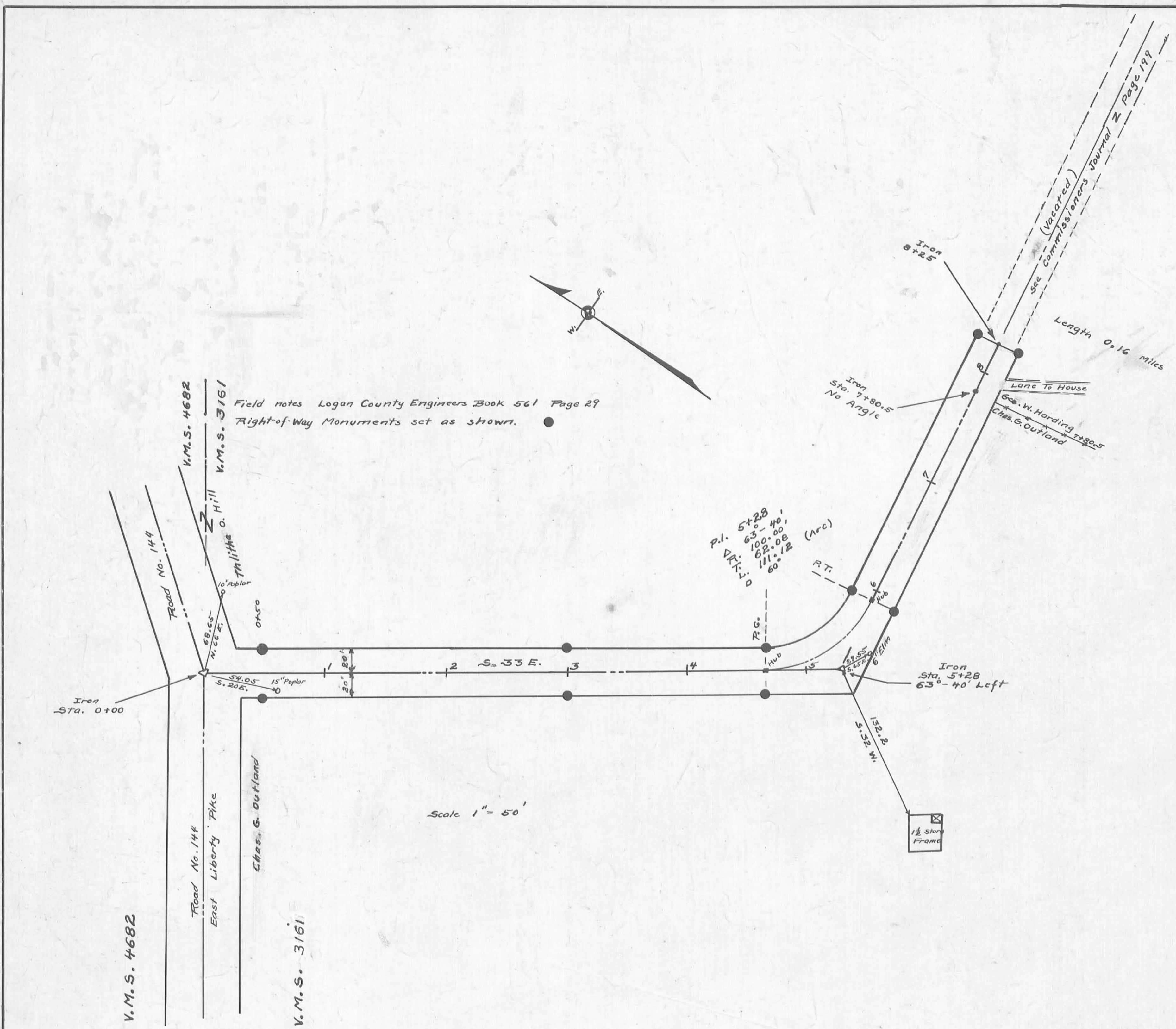


ROAD 148

X-148A



We the undersigned, owners of the property described in the accompanying plat, dedicate the same to public purposes, consistent therewith, clear of all obstructions which interfere with the improvement and / or maintenance of the Highway at the time of improvement.

OWNERS	WITNESSES
<u>Chas. G. Outland</u>	<u>Geo. P. Meddles</u>
<u>Geo. W. Harding</u>	<u>Geo. P. Meddles</u>
<u>Thelitha O. Hill</u>	<u>Munroe E. Jones</u>

Approved as to ownership this 10 day of September 1937
St. F. Wright
 Tax map Draftman

Office of Logan County Commissioners
 This plat has been approved and accepted by us this 21st day of May 1945
Chas. G. Outland
Geo. W. Harding
Thelitha O. Hill Board of County Commissioners

Approved and accepted by me
 this 21st day of May 1945
E. K. Lore
 County Engineer

County of Logan,
 State of Ohio.
 On this 21st day of May 1937, before me a County Engineer in and for said County and State, personally appeared Thelitha O. Hill, Chas. G. Outland and Geo. W. Harding who acknowledged the signing of this Plat to be their voluntary act and deed for the purposes herein mentioned.
 Witness my hand and seal this 21st day of May 1945
E. K. Lore
 County Engineer

Surveyed By F.F. Wright
 Drawn By F.F. Wright