

**Legend**

- = 5/8 inch diameter capped re-bar set
- = railroad spike set
- △ = railroad spike Fd.
- = Mag nail set
- ◻ = Concrete R/W monument Fd.

Caps placed on re-bars set are stamped "Logan County Engineer"

**C1**  
 P.I.=Sta.93+46.25  
 I = 67°53'18"Lt.

**CIRCULAR**  
 Da = 06°-00'-00"  
 Dc = 06°-00'-10"  
 T=500.16'  
 R=954.93'  
 L=921.47'  
 C = 886.14'  
 E = 123.06'  
 M = 109.10'

**SPIRALS**  
 Is = 06°-18'-00"  
 L=210.00'  
 X = 209.75'  
 Y = 7.69  
 P = 1.92  
 K = 104.96  
 LT = 140.09  
 ST = 70.08  
 Ts = 749.01

T.S. = Sta.85+97.24  
 S.C. = Sta.88+07.24  
 C.S. = 97+28.71  
 S.T. = 99+38.71

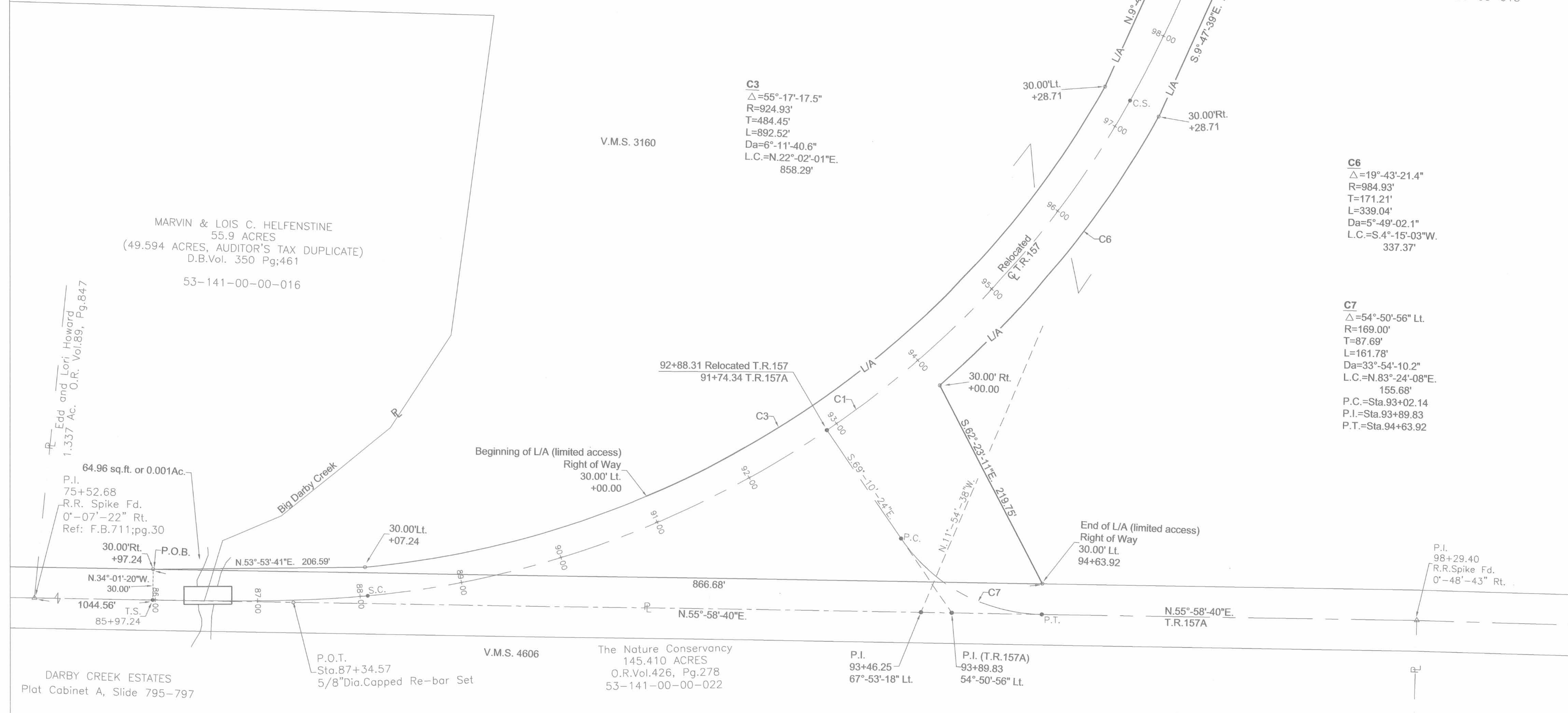
Midwest Express Inc.  
 121.985 ACRES  
 O.R.Vol. 381, Pg.38  
 53-141-00-00-018

0.001 Ac. out of Helfenstines 55.9 acre tract  
 +6.462 acres out of Midwest Express's 121.985 acre tract of which 0.083 acre are located within the present right of way of S.R.287  
 6.463 acres = total area

**C3**  
 Δ=55°-17'-17.5"  
 R=924.93'  
 T=484.45'  
 L=892.52'  
 Da=6°-11'-40.6"  
 L.C.=N.22°-02'-01"E.  
 858.29'

**C6**  
 Δ=19°-43'-21.4"  
 R=984.93'  
 T=171.21'  
 L=339.04'  
 Da=5°-49'-02.1"  
 L.C.=S.4°-15'-03"W.  
 337.37'

**C7**  
 Δ=54°-50'-56" Lt.  
 R=169.00'  
 T=87.69'  
 L=161.78'  
 Da=33°-54'-10.2"  
 L.C.=N.83°-24'-08"E.  
 155.68'  
 P.C.=Sta.93+02.14  
 P.I.=Sta.93+89.83  
 P.T.=Sta.94+63.92



WO#	2313
DRAWN BY:	JLG
CHECKED BY:	JLG
LOGAN COUNTY HIGHWAY DEPT.	
Right-of-Way Dedication Sheet Zone Township Road No. 157	
LOGAN COUNTY ENGINEER'S OFFICE	
JAMES K. COX P.E., P.S. LOGAN COUNTY ENGINEER	
2	4

C:\157\157\157\157.dwg Thu May 03 10:17:58 2001 Jennifer L. Ganson - Engineering Technician 2