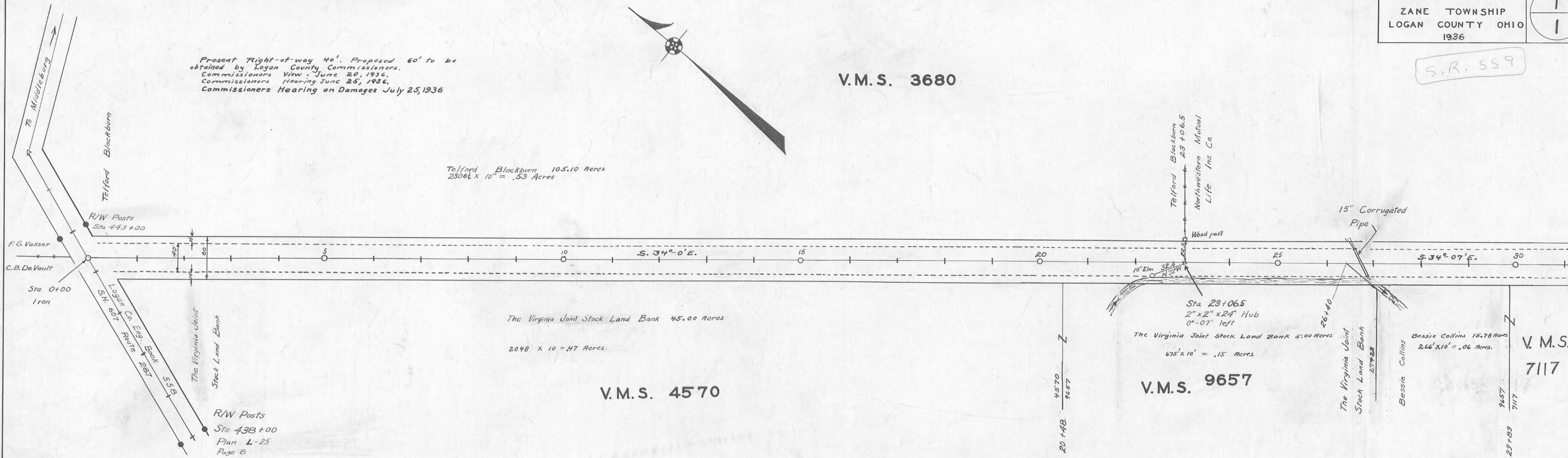


S.R. 559

V.M.S. 3680

Present Right-of-way 40'. Proposed 60' to be obtained by Logan County Commissioners. Commissioners View June 20, 1936. Commissioners Hearing June 25, 1936. Commissioners Hearing on Damages July 25, 1936

Telford Blackburn 105.10 Acres
2306 1/2 x 10" = .53 Acres



ROAD 159

The Virginia Joint Stock Land Bank 45.00 Acres
2048 X 10 = .47 Acres.

V.M.S. 4570

V.M.S. 9657

V.M.S. 7117

40' Road Logan County Road Record No. 1 Page 425
40' Road Logan County Road Record No. 3 Pages 76-79-83
Logan County Engineers Book No. 536 Pages 39-44

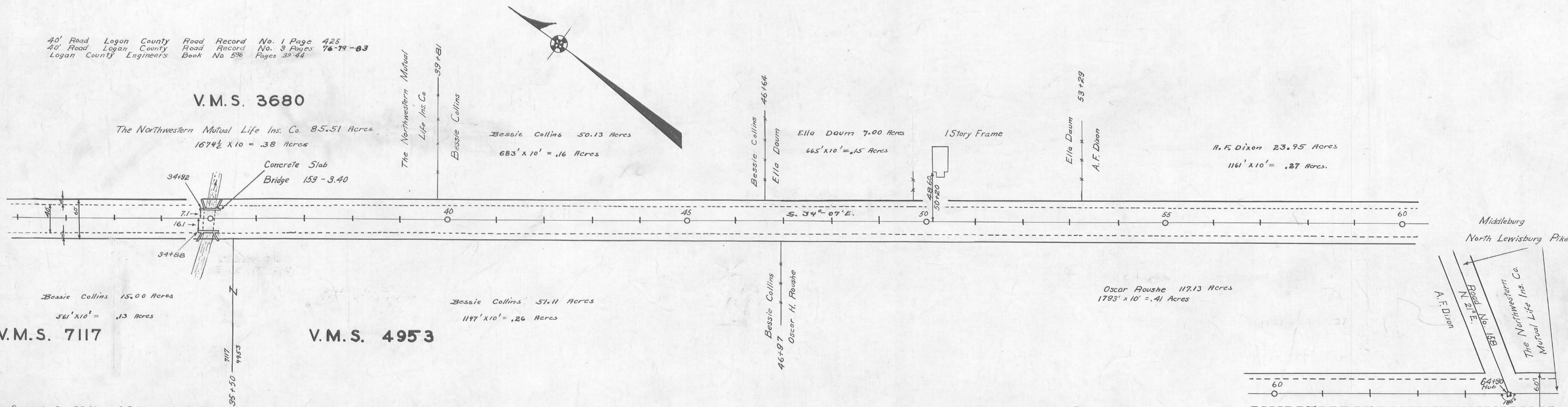
V.M.S. 3680

The Northwestern Mutual Life Ins. Co. 85.51 Acres
1674 1/2 X 10 = .38 Acres

Bessie Collins 50.13 Acres
683' X 10' = .16 Acres

Ella Daum 7.00 Acres
665' X 10' = .15 Acres

H.F. Dixon 23.95 Acres
1161' X 10' = .27 Acres.



Bessie Collins 15.00 Acres
561' X 10' = .13 Acres

Bessie Collins 51.11 Acres
1147' X 10' = .26 Acres

Oscar Roushe 17.13 Acres
1793' X 10' = .41 Acres

V.M.S. 7117

V.M.S. 4953

Surveyed By F.F. Wright & E. K. Core
June 1936
Drawn 1936 By F.F. Wright & W. Wren

1347

INDEXED ON MAP

608 Bays Rd
Columbus.

X-159

