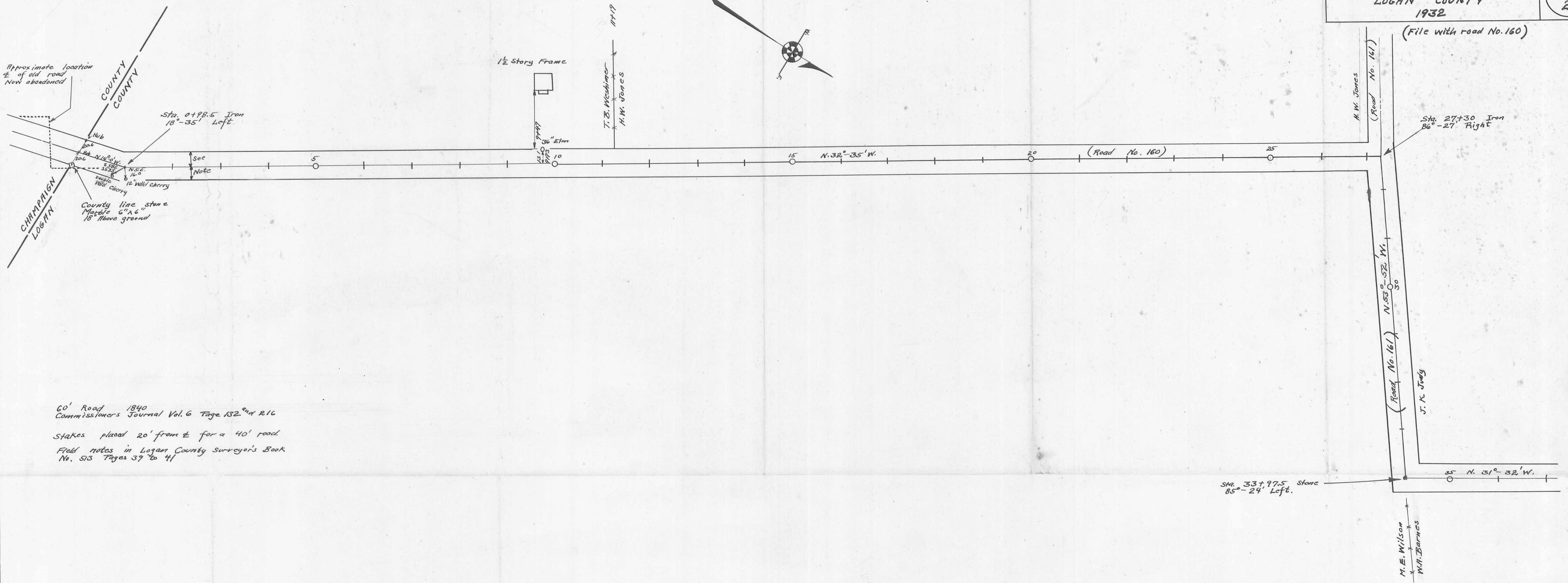
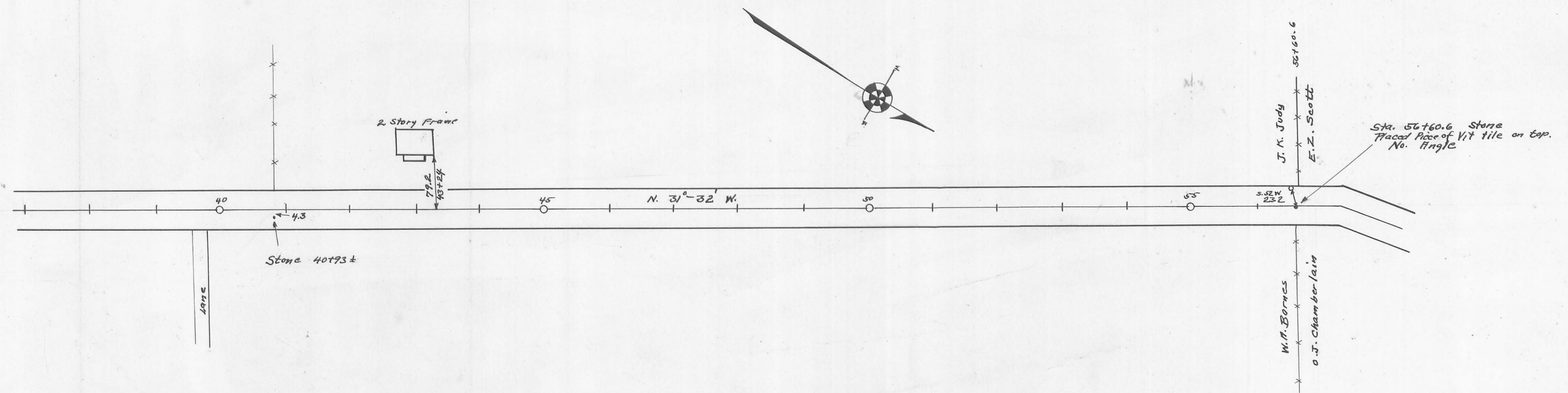


(File with road No. 160)

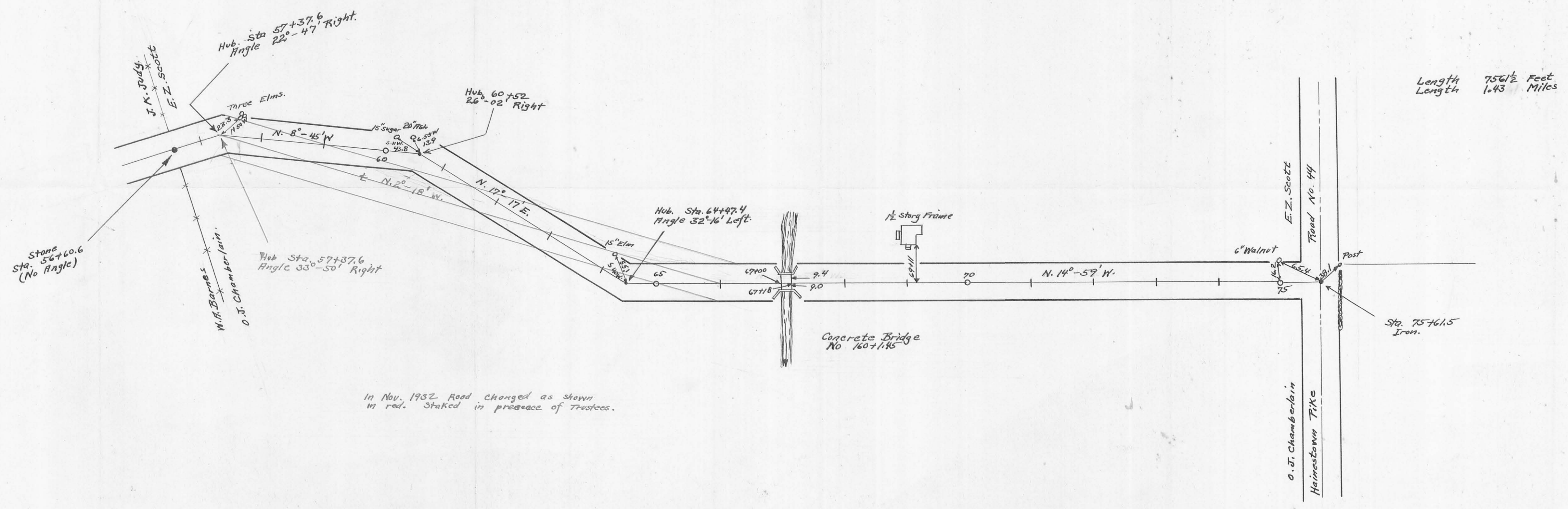
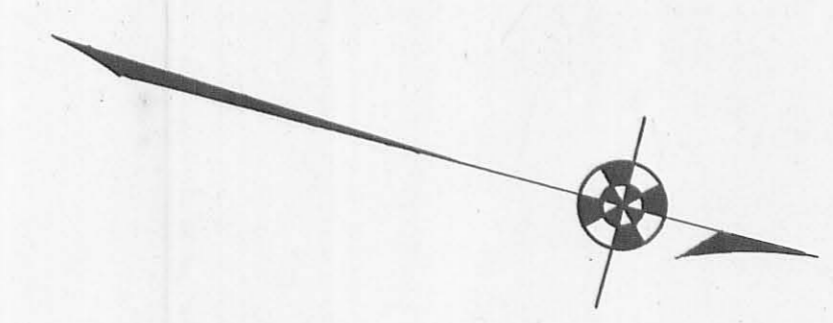


60' Road 1840  
 Commissioners Journal Vol. 6 Page 132 and R16  
 Stakes placed 20' from  $\pm$  for a 40' road.  
 Field notes in Logan County Surveyor's Book  
 No. 513 Pages 39 to 41



Drawn By  
 J.F. King

(File with road No. 160)



Length 756 1/2 Feet  
 Length 1.43 Miles

In Nov. 1932 Road changed as shown  
 in red. Staked in presence of trustees.

1932  
 1932