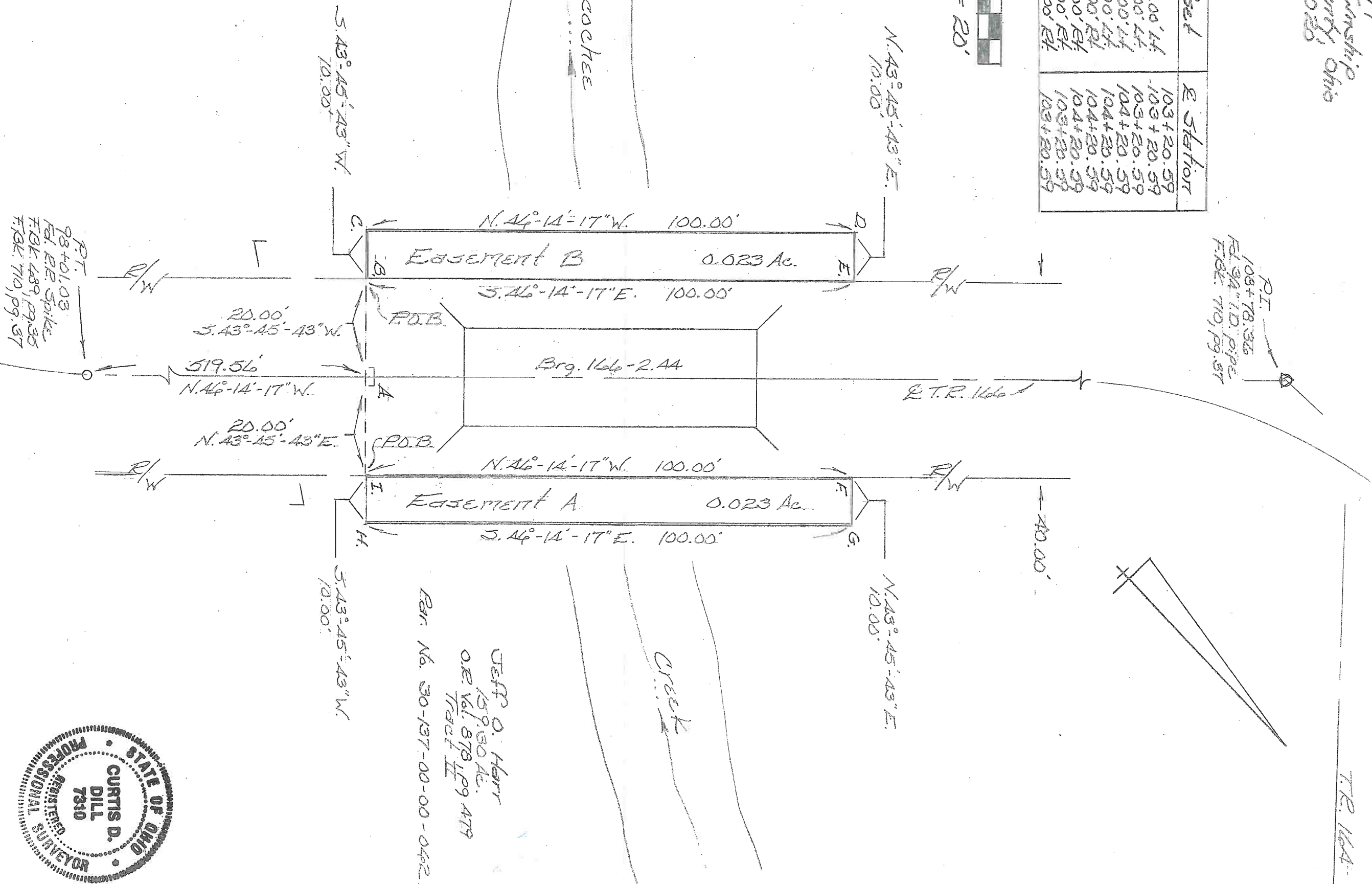


Perpetual Easement for Road Maintenance Purposes

V.M.S. 4479
 Monroe Township
 Logan County, Ohio
 May 27, 2020

P.L.	Offset	E Station
A.	0	103+20.59
B.	20.00' L.	103+20.59
C.	30.00' L.	103+20.59
D.	30.00' L.	104+20.59
E.	20.00' L.	104+20.59
F.	20.00' R.	104+20.59
G.	30.00' R.	104+20.59
H.	30.00' R.	103+20.59
I.	20.00' R.	103+20.59

Scale: 1" = 20'



Bearings are based on the grid of the North Zone of the Ohio State Plane Coordinate System.

This easement plat was prepared by the Logan County Engineer's Office from an actual field survey performed on 27 May 2020.

P.I. 98+01.03
 F.I. R.R. Spike
 F.B.K. 489, pg. 35
 F.B.K. 710, pg. 37

P.I. 97+20.2
 F.I. 3/4" I.D. pipe
 F.B.K. 489, pg. 35

JEFF O. HARR
 159.50 AC.
 O.R. Vol. 878, pg. 479
 TRACT II
 PAR. No. 30-137-00-00-042



Curtis D. Dill
 Deputy Surveyor
 Logan Co. Engineers Office
 Registered Surveyor No. 7310