

28-147-00-00-022-000
Joel R Karg Trustee
33.710 Acres, Tract II
OR 1330, PAGE 974

29-147-00-00-022-002
Robert S Zimmerman Co-Trustee etal
16.500 Acres
OR 1397, PAGE 573

This Plan was created from an actual field Survey completed on October 28th 2022 by the Logan County Engineer's Office. All measurements and Bearings were established in the field.

29-147-00-00-016-000
Henry P & Constance H Montgomery
58.879 Acres, Tract I
OR 1246, PAGE 67

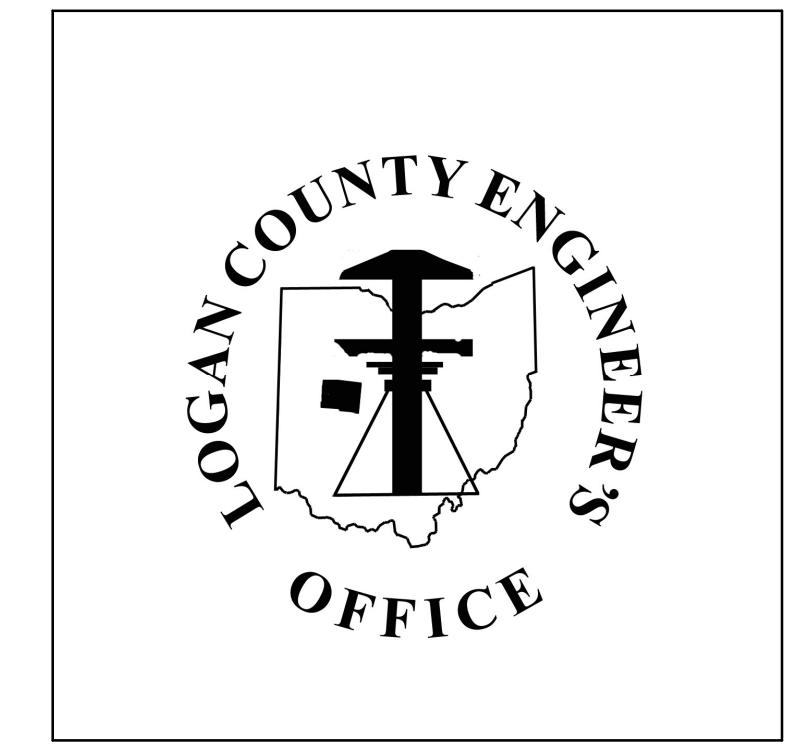
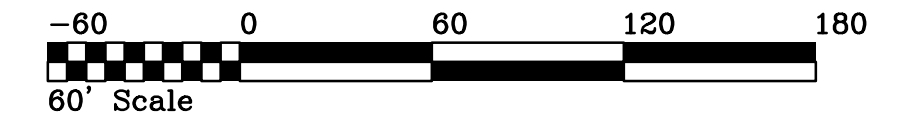
29-147-00-00-016-001
Allison H Frazee
5.001 Acres
OR 1034, PAGE 987

28-147-00-00-022-001
John Duane Alloway
1.668 Acres
OR 1033, PAGE 617

28-147-00-00-023-000
JACLYN G BRITENSTINE
19.140 Acres
OR 1394, PAGE 5966

28-147-00-00-015-000
SUZANNE KAY RATZLOFF
7.941 Acres, Tract II
OR 1200, PAGE 687

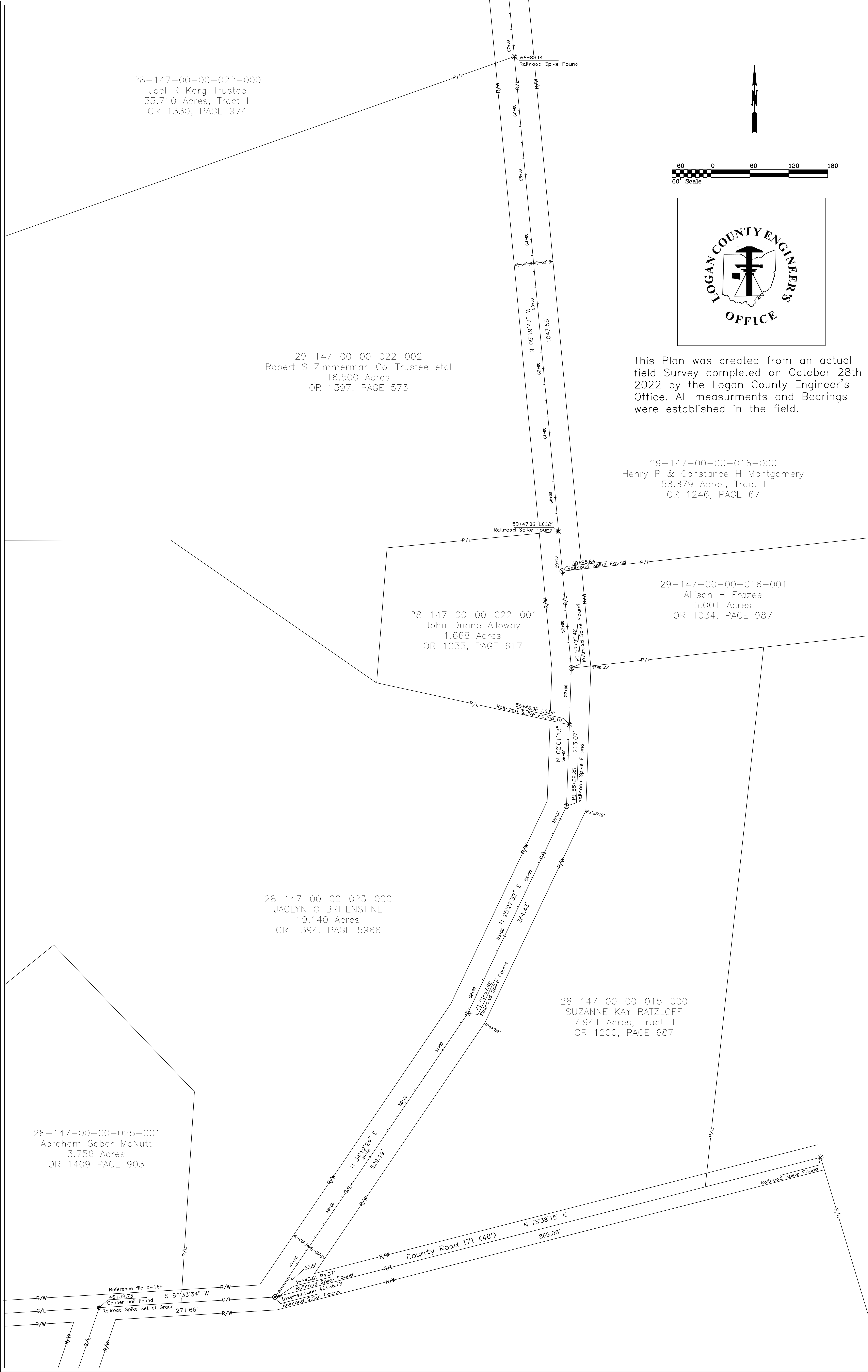
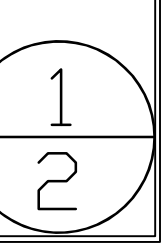
28-147-00-00-025-001
Abraham Saber McNutt
3.756 Acres
OR 1409 PAGE 903



This survey was prepared by Gregory Dappert

TOWNSHIP ROAD 169 ROAD PLAN

Logan County Engineer's Office
1991 County Road 13, Bellefontaine Ohio 43311



28-147-00-00-004-003
Robert E Trabert et ux
55.746 Acres
OR 560, PAGE 94

28-147-00-00-019-000
Shane J & Jessica L Freehauf
4.370 Acres
OR 1404, PAGE 5400

28-147-00-00-018-000
Henry P & Constance H Montgomery
6.550 Acres, Tract II
OR 1246, PAGE 67

28-147-00-00-020-000
Joel R Karg Trustee
34.217 Acres
OR 1330, PAGE 974

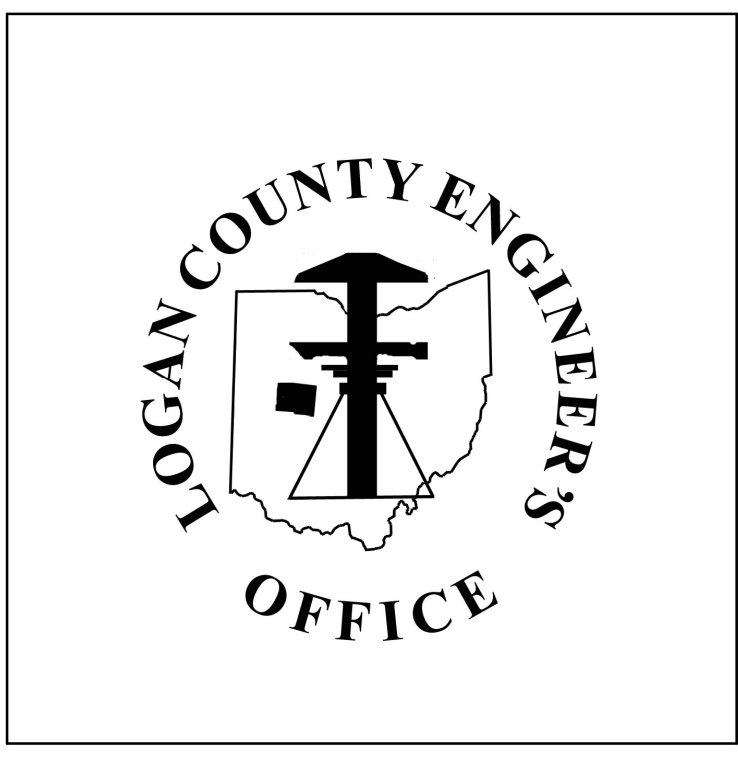
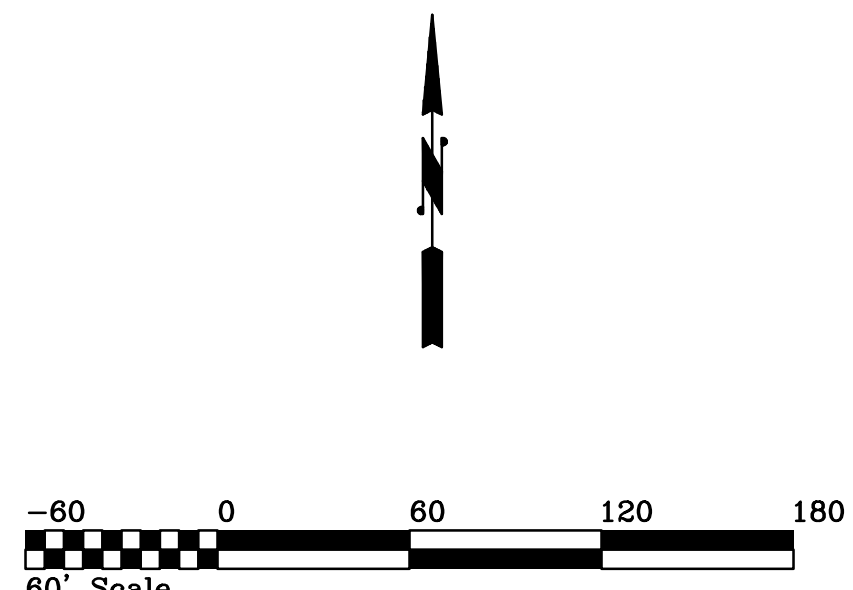
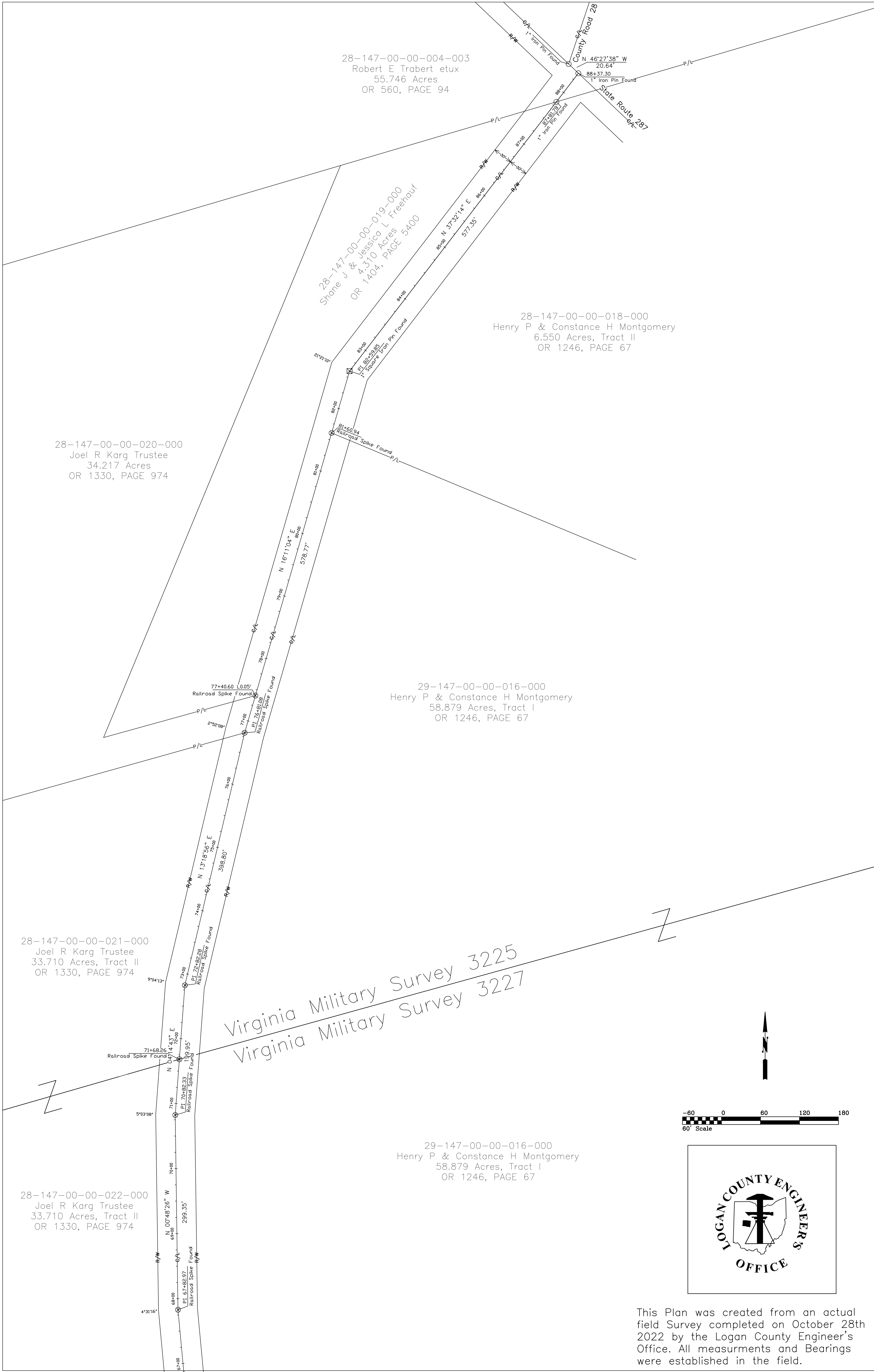
29-147-00-00-016-000
Henry P & Constance H Montgomery
58.879 Acres, Tract I
OR 1246, PAGE 67

28-147-00-00-021-000
Joel R Karg Trustee
33.710 Acres, Tract II
OR 1330, PAGE 974

Virginia Military Survey 3225
Virginia Military Survey 3227

28-147-00-00-022-000
Joel R Karg Trustee
33.710 Acres, Tract II
OR 1330, PAGE 974

29-147-00-00-016-000
Henry P & Constance H Montgomery
58.879 Acres, Tract I
OR 1246, PAGE 67



This Plan was created from an actual field Survey completed on October 28th 2022 by the Logan County Engineer's Office. All measurements and Bearings were established in the field.

This survey was prepared by Gregory Dappert

TOWNSHIP ROAD 169 ROAD PLAN

Logan County Engineer's Office
1991 County Road 13, Bellefontaine Ohio 43311

