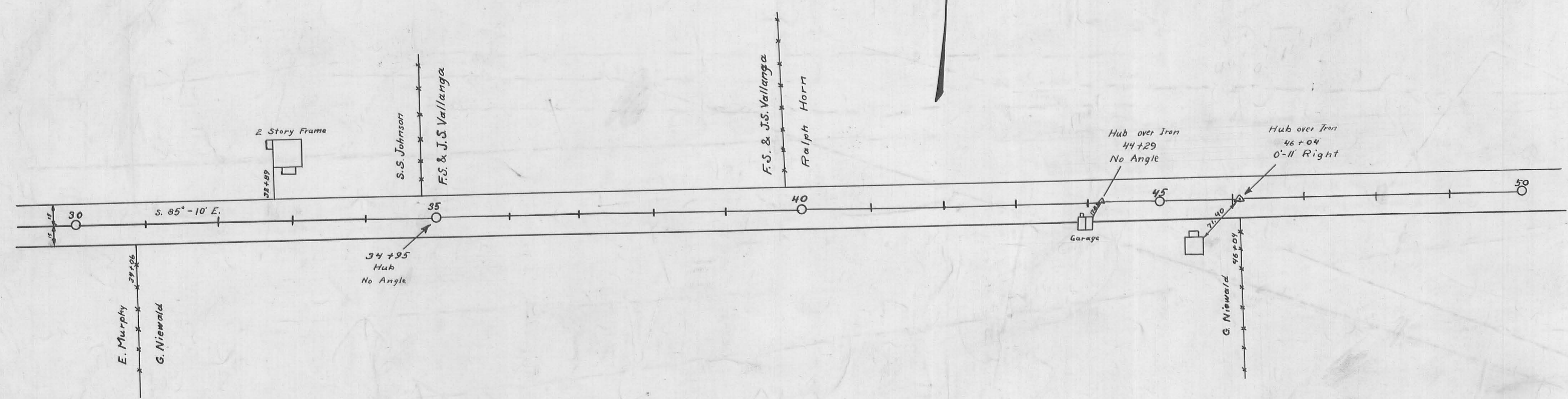
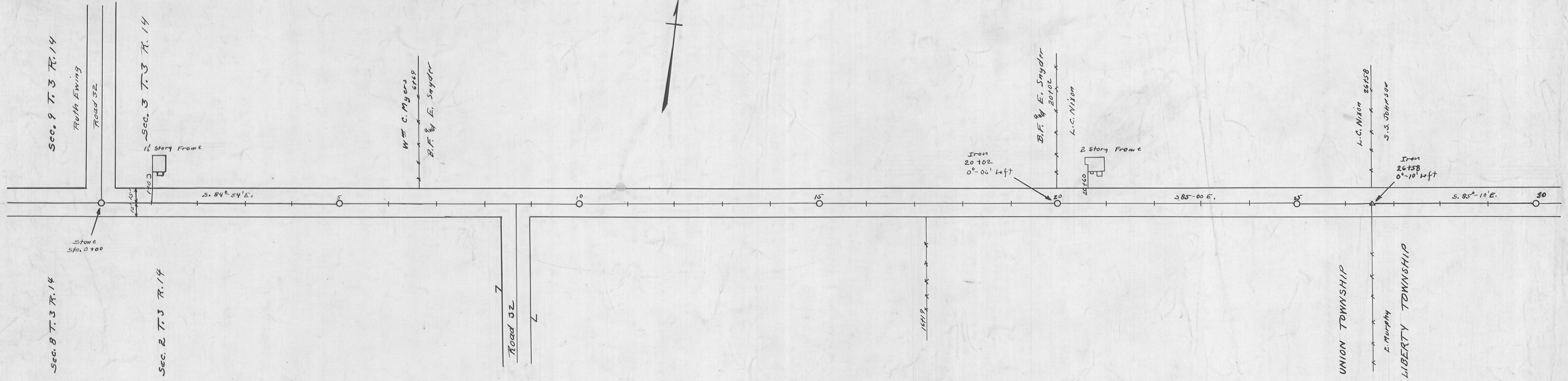


Field Notes in Logan County Surveyors
 Book No. 54
 20' Sta. 51+00 to 51+79.7
 25' Sta. 51+79.7 to I.C.H. 189
 Road Record No. 1 Page 65

W.P. Wright
 1932

ROAD 200

ROAD 200



X-200

X-200

Book 192

1384
INDEXED ON MAP

We the undersigned, owners of the above described land, dedicate the same to public purposes consistent therewith free of all obstructions which interfere with the improvement and the maintenance of the highway at the time of improvement.

Office of the Logan County Commissioners
This plat has been approved and accepted by us this 12th day of DEC. 1938.

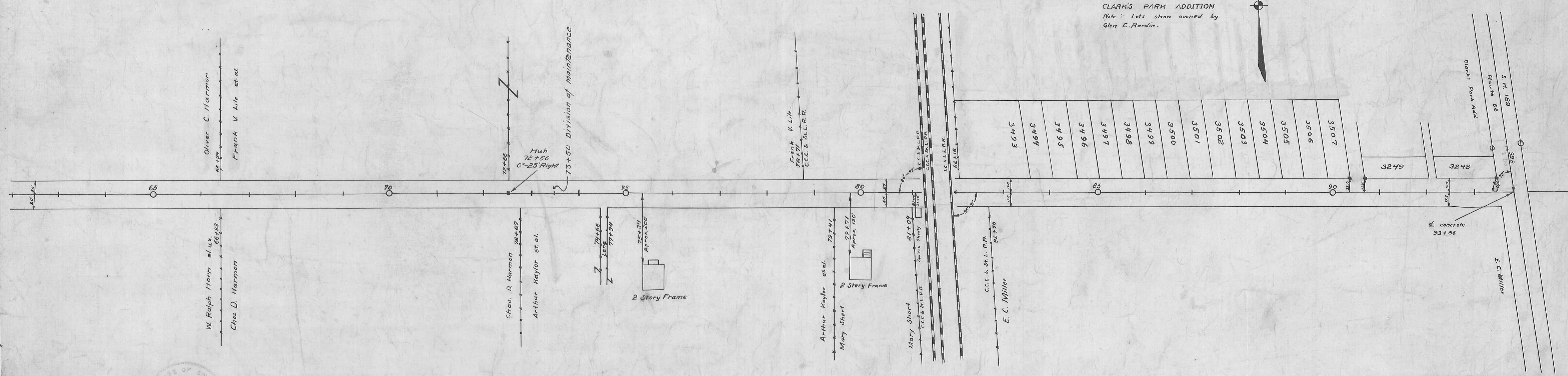
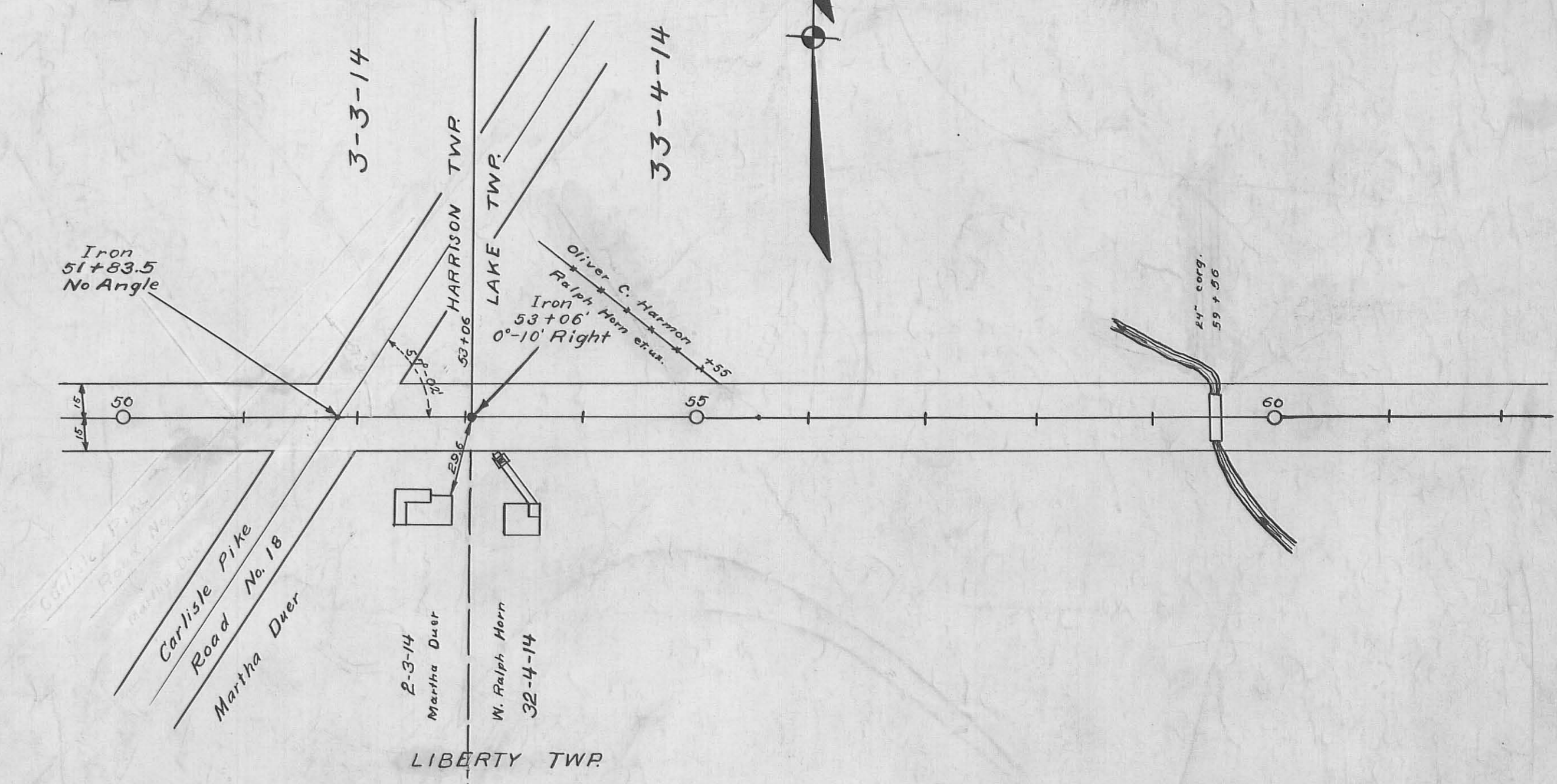
W. R. Wright
W. R. Wright
H. Shortman
Board of County Commissioners.

Approved and accepted by me this 8th day of APRIL 1938.
W. R. Wright
Logan County Engineer

County of Logan } S.S.
State of Ohio }
On this 8 day of APRIL 1938, before me the county Engineer in and for said county and state personally appeared Martha Duer, W. Ralph Horn, Chas. D. Harmon, Arthur Kaylor, Kizzie Horn, Mary Short, E.C. Miller, Anna Miller, Frank V. Life, Levi M. Hayes, Oliver C. Harmon, and Elizabeth Kaylor, who acknowledged the signing of this plat to be their voluntary act and deed for the purposes herein mentioned, witness my hand and seal this 8 day of APRIL 1938.
W. R. Wright
Logan County Engineer

OWNERS	WITNESSES
<i>Frank V. Life</i>	<i>Frank Beckwith</i>
<i>Oliver C. Harmon</i>	<i>Murray Jones</i>
<i>W. Ralph Horn</i>	<i>Frank Beckwith</i>
<i>Kizzie Horn</i>	<i>Murray Jones</i>
<i>Arthur Kaylor</i>	<i>Frank Beckwith</i>
<i>Elizabeth Kaylor</i>	<i>Murray Jones</i>
<i>Charles Harmon</i>	<i>Frank Beckwith</i>
<i>Mary Short</i>	<i>Murray Jones</i>
<i>Levi M. Hayes</i>	<i>Frank Beckwith</i>
<i>E. C. Miller</i>	<i>Murray Jones</i>
<i>Anna Miller</i>	<i>Frank Beckwith</i>
<i>Martha D. Duer</i>	<i>Murray Jones</i>

Approved as to owners this 8 day of April 1938
W. R. Wright
Tax Map Draftsman



ROAD 200

X-200

ROAD 200

X-200

INDEXED ON MAP
STATE OF OHIO
LOGAN COUNTY ENGINEER
1938