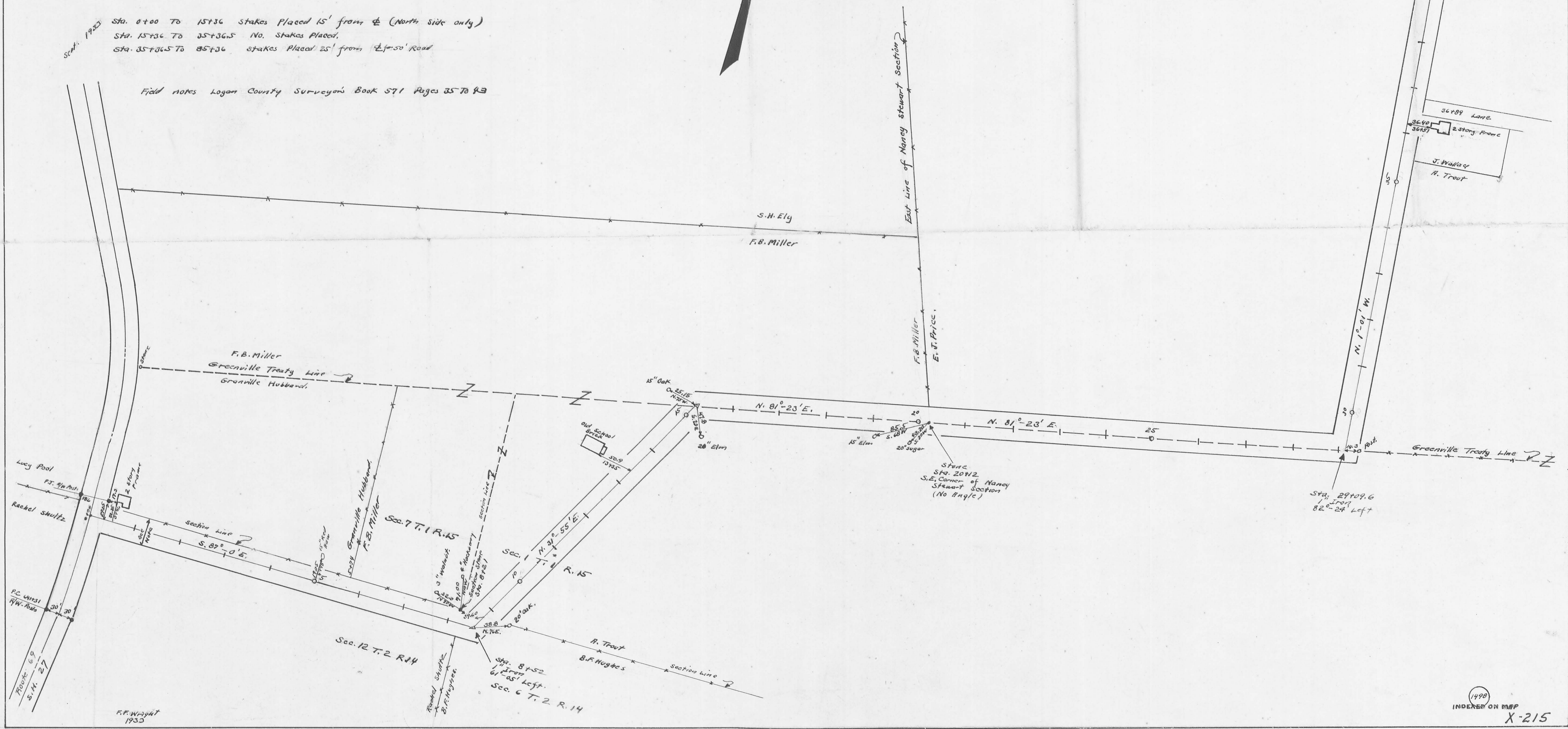


W.S. LARUE
4378
H. Trout

Sta. 0+00 To 8+52 30' Road.
Sec Road Record No. 2 Pages 332-334 Dec. 1880
Sta. 8+52 To 37+36.5 30' Road
Sec Road Record No 1 Page 138 Aug. 1861
Sta. 37+36.5 To 85+36 60' Road
Sec Commissioners Journal No 7 Page 141 Sept. 1843

Sept. 1923
Sta. 0+00 To 15+36 stakes placed 15' from ϕ (North side only)
Sta. 15+36 To 35+36.5 No. stakes placed.
Sta. 35+36.5 To 85+36 stakes placed 25' from ϕ 50' Road

Field notes Logan County Surveyor's Book 571 Pages 35 to 43



R.F. Wright
1933

E.B. Miller et al.
Road No. 54
J.V. Brunson
To Lewisport

Sta. 85+06
Stone
N.W. cor. of
S.W. Quarter
Sec. 24 T. 7 R. 8
W.G. Larve
Garrie Van Gordon

Length 8536 Feet
Length 1.6167 Miles

Sta. 74+02
Stone
No. 17412
W.G. Larve
W.E. Brunson

Sta. 67+06
Stone
No. 17412
W.E. Brunson
Garrie Van Gordon
2 Story Frame
8" Locus
3" Cherry
3" Cherry



Sec. 23 T. 7 R. 8
Sec. 24 T. 7 R. 8

Carrie Van Gordon
60+71
Sta. 60+71
Stone
E.J. Prid
8" Hickory
W.G. Larve

Sec. 26 T. 7 R. 8
Sec. 25 T. 7 R. 8

2 story frame
95.75
50+27

Garage
1 1/2 story frame
50+25
50+25

Field Notes Book 571