

Doit E. Miller et ux  
Deed Vol. 399 Pages 283-285 (3-5-1983)  
Per. Par. No. 32-082-00-00-030

127.74 Acres

Proposed Additions to  
North Greenfield Cemetery  
V.M.S. No. 5089  
Perry Township  
Logan County, Ohio  
September 1985  
Scale: 1" = 40'

Chester R. Kurtz  
Logan County Engineer

S. R. No. 292

60' R/W

Proposed Addition to Cemetery  
52,912.35<sup>sq</sup> ft or 1.215 Acres

Existing  
North Greenfield Cemetery  
Survey  
Per. Par. No. 32-082-00-00-029  
2.084 Acres

Vol. 90	P. 216-217	(4-18-1840)	- 0.10 Acres
Vol. 86	P. 482	(10-11-1897)	- 0.11 Acres
Vol. 90	P. 317-318	(10-25-1899)	- 0.90 Acres
Vol. 106	P. 26-27	(1-6-1908)	- 1.00 Acres
Vol. 112	P. 140	(5-2-1912)	- 0.10 Acres

Proposed Addition to Cemetery  
87,636.63<sup>sq</sup> ft or 2.012 Acres

Leo LeVan et ux  
Deed Vol. 232 Page 201 (9-24-1955)  
Per. Par. No. 32-096-00-00-029  
1.00 Acres

C. H. No. 2

60' R/W

Danny Lee Stanford et ux  
Off. Rec. 3 Pages 861-863 (6-22-85)  
Per. Par. No. 32-096-00-00-030

37.91 Acres

Note:  
Magnetic Bearings taken from previous surveys.

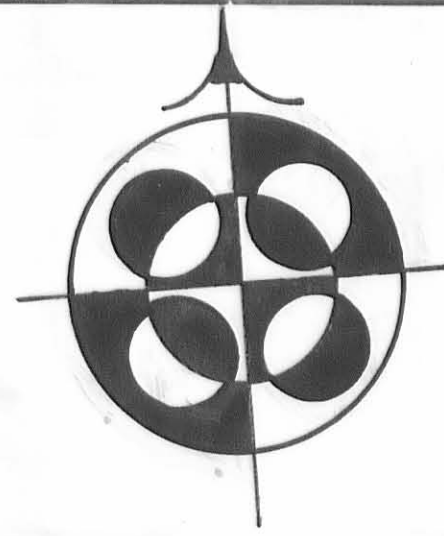
• - R. R. Spikes set.  
X - #5 Rebars (30 inches long) capped, set.

*Daniel E. Gilbert*  
Daniel E. Gilbert, P.S.  
Reg. Sur. No. 5402  
Deputy Logan County Surveyor



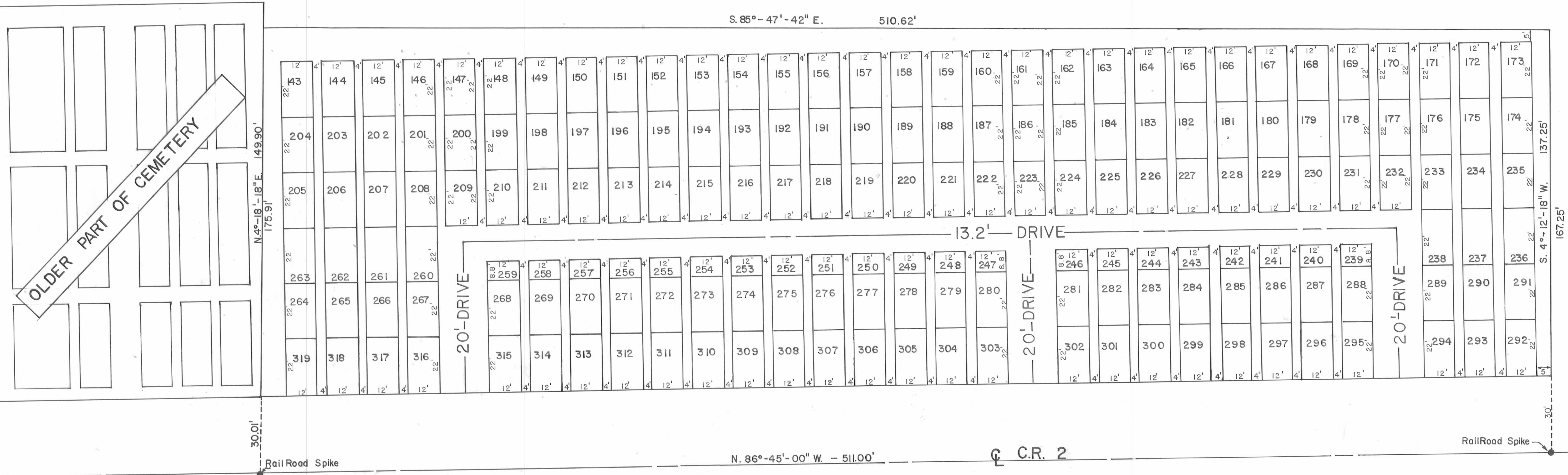
References:  
C.H. No. 2  
F.B. No. 579 Pages 62 & 65.  
S.R. No. 292 (C.H. No. 12)  
F.B. No. 574 Pages 20-23.  
Log. 292-(509) Plan L-55.  
Clapsaddle Survey.  
Survey Index No. 7389.





NORTH GREENFIELD CEMETERY  
 V.M.S. NO. 5089  
 PERRY TOWNSHIP  
 LOGAN COUNTY, OHIO  
 Scale = 1" = 20'

S. 85° - 47' - 42" E. 510.62'



Schedule of Lot Owners

143	167	190	213	236	259	282	305
144	168	191	214	237	260	283	306
145	169	192	215	238	261	284	307
146	170	193	216	239	262	285	308
147	171	194	217	240	263	286	309
148	172	195	218	241	264	287	310
149	173	196	219	242	265	288	311
150	174	197	220	243	266	289	312
151	175	198	221	244	267	290	313
152	176	199	222	245	268	291	314
153	177	200	223	246	269	292	315
154	178	201	224	247	270	293	316
155	179	202	225	248	271	294	317
156	180	203	226	249	272	295	318
157	181	204	227	250	273	296	319
158	182	205	228	251	274	297	
159	183	206	229	252	275	298	
161	184	207	230	253	276	299	
162	185	208	231	254	277	300	
163	186	209	232	255	278	301	
164	187	210	233	256	279	302	
165	188	211	234	257	280	303	
166	190	212	235	258	281	304	