

NORTHWOOD - RICHLAND PIKE

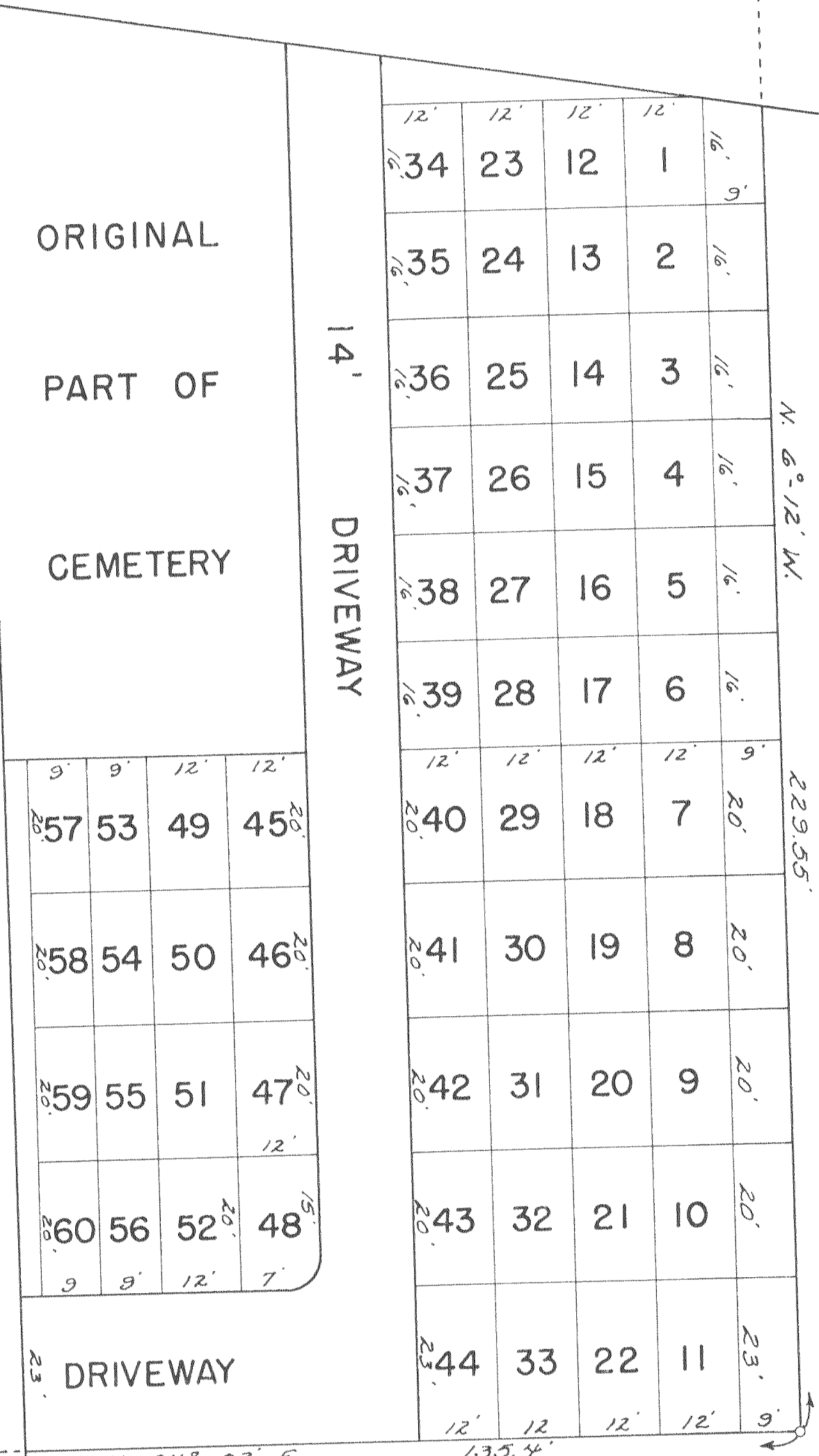
C. H. NO. 105 - 50'

PATTERSON PIKE

C. H. NO. 49 - 40'

ORIGINAL
PART OF
CEMETERY

14' DRIVEWAY



JOHNSTON CEMETERY
V. M. S. No. 9951
RICHLAND TOWNSHIP
LOGAN COUNTY, OHIO
1969

SCALE: 1" = 20'